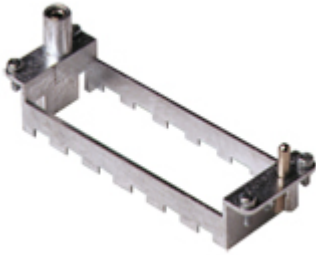


Part number

CX 06 TM



Brief description:

for 6 modular units and enclosures size 104.27, frame for hoods, for 6 modular units and enclosures size 104.27

Product description

Version	frames for modular units
Variant	for 6 modular units and enclosures size 104.27
Style	frame for hoods
Family	MIXO series, customizable inserts
Size	6 modules

Further technical details

UL 94 flammability rating	V-0
Weight	63,60 g

Approvals / Standards

Quality mark	 DNV-GL, EAC
Conformity	CQC, CE

General ordering information

EAN13 code	8015747041959
Tariff number	85369095

Packaging Information

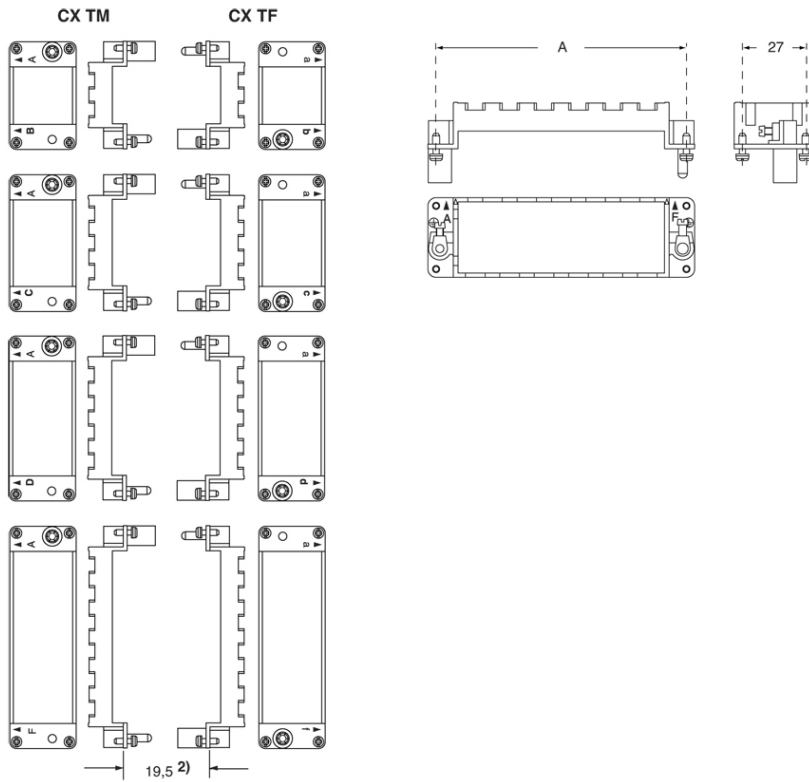
Packaging length	270,00 mm
Packaging height	75,00 mm
Packaging width	180,00 mm
Packaging weight	2,37 kg
Packaging volume	3,65 dm ³
Packaging description	Carton box
Packaging quantity	30 Pcs
Packaging EAN code	8015747041966
Sub-packaging length	113,00 mm
Sub-packaging height	36,00 mm
Sub-packaging width	180,00 mm
Sub-packaging weight	0,40 kg
Sub-packaging volume	0,73 dm ³
Sub-packaging description	Carton tray
Sub-packaging quantity	5 Pcs
Sub-packaging EAN barcode	8015747041973

Part number

CX 06 TM



Catalogue drawings



Notes

the modular inserts must be installed in suitable frames which in turn are installed in traditional housings or COB panel support