

KVT

Split cable glands



1

Product description

KVT is a circular split frame for quick and easy installation of cables or complete cable harnesses.

Polyamide locknuts are included in the shipment.

For routing SUB-D, DVI or PROFIBUS connectors in combination with the split cable glands KVT, special locknuts with cut-outs are required. The cut-out dimensions are listed on page 122.

* max. Cable diameter 15mm

Locknuts

Special locknuts with cut-outs are separate available.



KGM-SUB-D9 (Order No. 45105) fits SUB-D9 connectors.

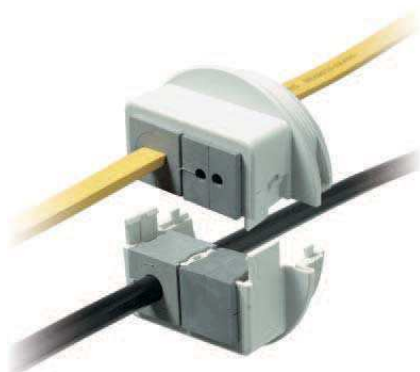
KGM-PB (Best.Nr. 45107) fits DVI and PROFIBUS connectors.

KGM-SUB-D25 (Order No. 45108) fits SUB-D25 connectors.

Description	Type	Order No.	Inserts KT small large	Thread Thread length	PU
	KVT 25*	45035	1 -	M25 x 1.5 Length: 14 mm	10
	KVT 32	45036	1 -	M32 x 1.5 Length: 14 mm	10
	KVT 32 + KGM-SUB-D9	45037	1 -	M32 x 1.5 Length: 14 mm	10
	KVT 40	45203	1 -	M40 x 1.5 Length: 14 mm	10
	KVT 40 + KGM-PB	45205	1 -	M40 x 1.5 Length: 14 mm	10

KVT

Split cable glands



Type	Order No.	Inserts KT small large	Thread Thread length	PU	Description
------	-----------	--------------------------	----------------------	----	-------------

KVT 50 2	45204	2 -	M50 x 1.5 Length: 14 mm	10	
KVT 50 2 + KGM-SUB-D25	45206	2 -	M50 x 1.5 Length: 14 mm	10	
KVT 63 1**	45211	- 1	M63 x 1.5 Length: 14 mm	5	
KVT 63 4**	45214	4 -	M63 x 1.5 Length: 14 mm	5	

1

Advantages

- Insertion of pre-terminated cables
- Warranty of pre-terminated cables remains
- Retrofitting and maintenance can be carried out easily and quickly
- High packing density, wide variety
- Suitable for standard or metric cut-outs
- Polyamide locknuts are included in the shipment

Specification

Material	Polycarbonate
Colour	similar RAL 7035
Flame class	UL-94 Vo, self-extinguishing
Protection class	IP 54, with gasket and correct selection of the cable inserts
Temperature	- 30°C to + 100°C (static)
Properties	halogen-free, silicone-free
Cut-out dimension	metric standard sizes

Accessories

KT Cable inserts	Page 22 26
KVT-EMC bracket	Page 93
Locknuts	Page 122

** For KVT 63 a locknut M63 (brass-nickel plated) is included in delivery.

KVT - SNAP

Split cable glands



1

Product description

KVT is a circular split frame for quick and easy installation of cables or complete cable harnesses.

Pre terminated cables can be routed through thick walls (> 5mm) e.g. into cast junction boxes by using the model KVT-SNAP, without the use of tools.

* For KVT 63 a locknut M63 (brass-nickel plated) is included in delivery.

Assembly

- SNAP ring is screwed into metric thread tapped into housing (or it can be fastened with a lock nut).
- Once the SNAP ring is affixed to the housing the KVT equipped with cables is simply pushed into the SNAP ring. Quick and easy installation!

Specification

Material	Polycarbonate
Colour	similar RAL 7035
Flame class	UL-94 Vo, self-extinguishing
Protection class	IP 54, with gasket and correct selection of the cable inserts
Temperature	- 30°C to + 100°C (static)
Properties	halogen-free, silicone-free
Cut-out dimension	metric standard cut-outs

Accessories

KT Cable inserts	Page 22 26
KVT-EMC bracket	Page 93
Locknuts	Page 122

Description	Type	Order No.	Inserts KT small large	Thread Thread length	PU
	KVT - SNAP 32	45130	1 -	M32 x 1.5 Length: 11 mm	10
	KVT - SNAP 40	45134	1 -	M40 x 1.5 Length: 11 mm	10
	KVT - SNAP 63 4*	45152	4 -	M63 x 1.5 Length: 11 mm	5
	KVT - SNAP 63 1*	45154	- 1	M63 x 1.5 Length: 11 mm	5
	KGM 32	52275	PA, grey	M32 x 1.5	10
	KGM 40	52276	PA, grey	M40 x 1.5	10
	KGM 63	52278	PA, grey	M63 x 1.5	5

KVT - W90

Split cable glands



Type	Order No. with locknut	Inserts KT small large	Thread Thread length	PU	Description
------	---------------------------	-----------------------------	-------------------------	----	-------------

KVT 32 - W90	45404	1 -	M32 x 1.5 Length: 11.5 mm	10	
GMT 32	31120	-	M32 x 1.5	10	
KVT 50 4 - W90	45424	4 -	M50 x 1.5 Length: 11.5 mm	5	
KVT 50 1 - W90	45414	- 1	M50 x 1.5 Length: 11.5 mm	5	
GMT 50	31140	-	M50 x 1.5	10	

1

Product description

The split KVT-W90 cable glands are used to insert and seal pre-terminated cables and conduits at a 90° angle.

In particular, the KVT 50-W90 is perfectly suited to hold corrugated or smooth hoses. A large number of cable entry inserts is available to the user.

Polyamide locknuts are included in the shipment.

Advantages

- Installation at an angle of 90° to the cabinet
- Insertion of pre-terminated cables and conduits
- Warranty of pre-terminated cables remains
- Suitable for standard or metric cut-outs

Specification

Material	Polycarbonate
Flame class	UL-94 Vo, self-extinguishing
Protection class	IP 54, with gasket and correct selection of the cable inserts
Temperature	- 30°C to + 100°C (static)
Properties	halogen-free, silicone-free
Colour	similar RAL 7035

Accessories

KT Cable inserts	Page 22 26
WST Conduit, split	Page 116
KVT-EMC bracket	Page 93
Locknuts	Page 122