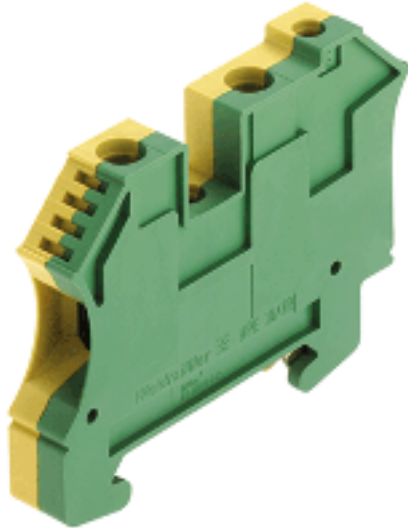


W-Series
WPE 10/ZR

Weidmüller Interface GmbH & Co. KG
Klingenbergstraße 16
D-32758 Detmold
Germany
Fon: +49 5231 14-0
Fax: +49 5231 14-292083
www.weidmueller.com



The PE terminals are available in two designs: standard and compact (N), with rated cross-section from 1.5 mm² to 150 mm² (e.g. 2.5 mm² – WPE 2.5 or 4 mm² – WPE 4N).

General ordering data

Type	WPE 10/ZR
Order No.	1042500000
Version	W-Series, PE terminal, Rated cross-section: 10 mm ² , Screw connection, Direct mounting
GTIN (EAN)	4032248285679
Qty.	50 pc(s).

W-Series WPE 10/ZR

Weidmüller Interface GmbH & Co. KG
 Klingenbergstraße 16
 D-32758 Detmold
 Germany
 Fon: +49 5231 14-0
 Fax: +49 5231 14-292083
 www.weidmueller.com

Technische Daten

Dimensions and weights

Length	66 mm	Width	9.9 mm
Height	49 mm	Height of lowest version	49.5 mm
Net weight	32.32 g		

Temperatures

Operating temperature		Storage temperature	
Continuous operating temp., min.	-50 °C	Continuous operating temp., max.	120 °C

Additional technical data

Explosion-tested version	No	Installation advice	Direct mounting
Number of similar terminals	1	Open sides	closed
Type of mounting		Version	Screw connection, Additional connection, With PE connection, closed
	Screwed		

CSA ratings data

Certificate No. (CSA)	200039-1352963	Wire cross section max. (CSA)	6 AWG
Wire cross section min. (CSA)	14 AWG		

Clampable wires (additional connection)

Clamping range, further connection, min.	0.33 mm ²	Clamping range, further connection, max.	6 mm ²
Rated cross-section, further connection	4 mm ²	Connection direction	on side
Number of connections, additional connection	2	Conductor cross-section, flexible plus plastic collar DIN 46228/1, further connection, min.	1.5 mm ²
Conductor cross-section, flexible plus plastic collar DIN 46228/1, further connection, max.	16 mm ²		

W-Series WPE 10/ZR

Weidmüller Interface GmbH & Co. KG
 Klingenbergstraße 16
 D-32758 Detmold
 Germany
 Fon: +49 5231 14-0
 Fax: +49 5231 14-292083
 www.weidmueller.com

Technische Daten

Clampable wires (rated connection)

Type of connection	Screw connection	Stripping length	12 mm
Blade size	0.6 x 3.5 mm	Connection direction	on side
Number of connections	1	Clamping range, rated connection, min.	1.31 mm ²
Clamping range, rated connection, max.	16 mm ²	Clamping screw	M 4
Tightening torque, min.	1.2 Nm	Tightening torque, max.	1.8 Nm
Torque level with DMS electric screwdriver	4	Gauge to IEC 60947-1	B6, A4
Wire connection cross section, solid core, max. rated connection	1.5 mm ²	Wire connection cross section, solid core max. rated connection	16 mm ²
Wire connection cross section, stranded, rated connection, min.	1.5 mm ²	Wire connection cross section, stranded, rated connection, max.	16 mm ²
Wire connection cross section, finely stranded, max.	16 mm ²	Wire connection cross-section, finely stranded, min.	1.5 mm ²
Wire connection cross section, finely stranded with wire-end ferrules DIN 46228/1, rated connection, min.	1.5 mm ²	Wire connection cross section, finely stranded with wire-end ferrules DIN 46228/1, rated connection, max.	16 mm ²
Cross-section for connected conductor, finely stranded with wire-end ferrules and plastic collars DIN 46228/4, rated connection, min.	1.5 mm ²	Wire connection cross-section, finely stranded with wire-end ferrules and plastic collars DIN 46228/4, rated connection, max.	16 mm ²
Wire connection cross section AWG, min.	AWG 14	Wire connection cross section AWG, max.	AWG 6

Dimensions

TS 35 offset	32 mm
--------------	-------

Other connections

Number of connections, additional connection	2
--	---

Rated data

Rated cross-section	10 mm ²	Rated voltage to adjoining terminal	1,000 V
Rated impulse withstand voltage to adjacent terminal	8 kV	Standards	IEC 60947-7-2
Pollution severity	3		

UL ratings data

Certificate No. (UR)	E60693	Conductor size Factory wiring max. (UR)	6 AWG
Conductor size Factory wiring min. (UR)	16 AWG	Conductor size Field wiring max. (UR)	6 AWG

Material data

Material	Wemid	Colour	Yellow, Green
UL 94 flammability rating	V-0		

System specifications

Product family	W-Series	Type of connection	Screw connection
Connection direction	on side	Number of levels	1
Number of connections	1	No. of clamping points per level	3
Levels cross-connected internally	No	Mounting rail	TS 35
End cover plate required	No		

Erstellungs-Datum December 13, 2013 11:51:44 AM CET

Datenblatt

**W-Series
WPE 10/ZR**

Weidmüller Interface GmbH & Co. KG
 Klingenbergstraße 16
 D-32758 Detmold
 Germany
 Fon: +49 5231 14-0
 Fax: +49 5231 14-292083
 www.weidmueller.com

Technische Daten

PE rating data

Centre screw on PE terminals	M 3	PEN function	No
Pollution severity	3	Rated cross-section	10 mm ²
Rated short-time current	1200 A (10 mm ²)	Standards	IEC 60947-7-2
Tightening torque range for fixing screw	0.5... 1.0 Nm	Torque level with DMS electric screwdriver	4

Classifications

ETIM 3.0	EC000901	UNSPSC	30-21-18-11
eClass 5.1	27-14-03-05	eClass 6.2	27-14-03-05
eClass 7.1	27-14-03-05		

Product information

Descriptive text technical data	Max. conductor cross-sections refer to 10 mm ² and 16 mm ² connections. Tighten AWG 6/7 and H07V-R16 to 2.4 Nm.
Descriptive text accessories	Rail support protective insulation for installation of mounting rail "SH 2" order No. 0494920000 (QTY 10).

Approvals

Approvals



ROHS Conform