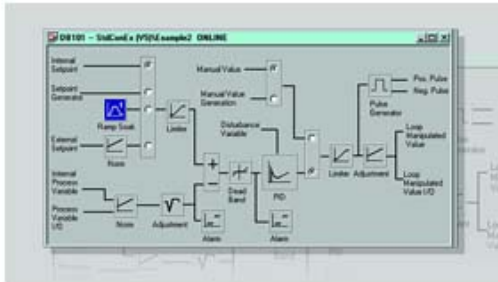


SIMATIC S7, STAND.PID CTRL V5.2 SINGLE LICENSE F.1  
 INSTALLATION R-SW, SW AND DOCU. ON CD, CLASS A, 2  
 LANGUAGES (G,E), REFERENCE-HW: S7-300/-400, C7



### Standards, approvals, certificates

Developed in accordance with IEC 61131	Yes
--	-----

### Hardware requirements

Main memory, min.	16 Mbyte
Required memory on hard disk, min.	1.85 Mbyte

### Software requirement

Software required	STEP 7 V4.0 or higher
-------------------	-----------------------

### Operating systems

Executable for operating system	
• Windows 9x	Yes
• Windows ME	No
• Windows NT 4.0	Yes
• Windows 2000	Yes
• Windows XP	Yes

### Software

Class A	Yes
Runtime software	
Target system	
— C7	Yes; C7-620
— S7-300	Yes; CPU 313 or higher
— S7-400	Yes
Authorization/licenses	
• Single license (EL)	Yes

## Configuration

### Configuration software

- Current version V5.0

## Documentation

### Languages

- German Yes
- English Yes

**last modified:** 12.03.2015