

# DIN rail adapter - PTFIX 1,5-NS15A

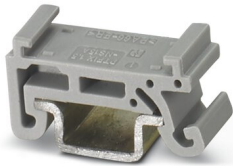


1049500

<https://www.phoenixcontact.com/gb/products/1049500>

Please be informed that the data shown in this PDF document is generated from our Online Catalog. Please find the complete data in the user documentation. Our General Terms of Use for Downloads are valid.

DIN rail adapter, length: 21.6 mm, width: 8 mm, height: 10.85 mm



## Commercial Data

|                                      |                     |
|--------------------------------------|---------------------|
| Item number                          | 1049500             |
| Packing unit                         | 30 pc               |
| Minimum order quantity               | 30 pc               |
| Sales Key                            | BEA14Z              |
| Product Key                          | BEA14Z              |
| Catalog Page                         | Page 428 (C-1-2019) |
| GTIN                                 | 4055626662213       |
| Weight per Piece (including packing) | 0.895 g             |
| Weight per Piece (excluding packing) | 0.8 g               |
| Customs tariff number                | 39269097            |
| Country of origin                    | PL                  |

# DIN rail adapter - PTFIX 1,5-NS15A



1049500

<https://www.phoenixcontact.com/gb/products/1049500>

## Technical Data

### Product properties

|              |                   |
|--------------|-------------------|
| Product type | Mounting material |
|--------------|-------------------|

### Dimensions

|        |          |
|--------|----------|
| Width  | 8 mm     |
| Height | 10.85 mm |
| Length | 21.6 mm  |

### Environmental and real-life conditions

#### Ambient conditions

|  |   |
|--|---|
| Ambient temperature (operation)          | -60 °C ... 105 °C (max. short-term operating temperature RTI Elec.)       |
| Ambient temperature (storage/transport)  | -25 °C ... 60 °C (for a short time, not exceeding 24 h, -60 °C to +70 °C) |
| Ambient temperature (assembly)           | -5 °C ... 70 °C   |
| Ambient temperature (actuation)          | -5 °C ... 70 °C   |
| Permissible humidity (storage/transport) | 30 % ... 70 %   |


# DIN rail adapter - PTFIX 1,5-NS15A




1049500

<https://www.phoenixcontact.com/gb/products/1049500>

## Approvals

|  <b>CSA</b><br>Approval ID: 13631 |                       |                       |                   |                             |
|--|-----------------------|-----------------------|-------------------|-----------------------------|
|  | Nominal Voltage $U_N$ | Nominal Current $I_N$ | Cross Section AWG | Cross Section $\text{mm}^2$ |
| Use group B  | 300 V                 | 20 A                  | 26 - 12           | -                           |
| Use group C  | 150 V                 | 20 A                  | 26 - 12           | -                           |
| Use group D  | 300 V                 | 10 A                  | 26 - 12           | -                           |

|  <b>cULus Recognized</b><br>Approval ID: E60425 |                       |                       |                   |                             |
|--|-----------------------|-----------------------|-------------------|-----------------------------|
|  | Nominal Voltage $U_N$ | Nominal Current $I_N$ | Cross Section AWG | Cross Section $\text{mm}^2$ |
| Use group B  | 300 V                 | 20 A                  | 26 - 12           | -                           |
| Use group C  | 150 V                 | 20 A                  | 26 - 12           | -                           |
| Use group F  | 500 V                 | 20 A                  | 26 - 12           | -                           |
| Use group D  | 300 V                 | 10 A                  | 26 - 12           | -                           |

# DIN rail adapter - PTFIX 1,5-NS15A



1049500

<https://www.phoenixcontact.com/gb/products/1049500>

## Classifications

### ECLASS

|               |          |
|---------------|----------|
| ECLASS-9.0    | 27370419 |
| ECLASS-10.0.1 | 27370419 |
| ECLASS-11.0   | 27370419 |

### ETIM

|          |          |
|----------|----------|
| ETIM 8.0 | EC001024 |
|----------|----------|

### UNSPSC

|             |          |
|-------------|----------|
| UNSPSC 21.0 | 39121400 |
|-------------|----------|

# DIN rail adapter - PTFIX 1,5-NS15A



1049500

<https://www.phoenixcontact.com/gb/products/1049500>

## Environmental Product Compliance

China RoHS

Environmentally friendly use period: unlimited = EFUP-e

No hazardous substances above threshold values

Phoenix Contact 2022 © - all rights reserved

<https://www.phoenixcontact.com>

PHOENIX CONTACT Ltd

Halesfield 13, Telford

Shropshire, TF7 4PG

01952 681700

[info@phoenixcontact.co.uk](mailto:info@phoenixcontact.co.uk)