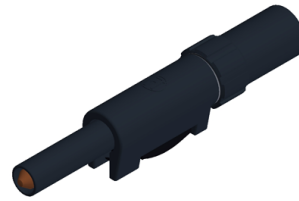


Plugs

SLS 20 B



4 mm sliding sleeve system

Product	SLS 20 B												
description	<p>Touch protected plug to assemble with screw connection for cables up to 1.5mm². Insulated by latching and sprung insulating sleeve, to be released by pressure on the lateral locking spring. plug with contact spring, 4mm diameter.</p> <p>*Apply to this typ 150 VDC, CAT II; according IEC / EN 61010-031 item 6.4. comment 4; allowed for devices with not yet protected sockets</p>												
article-no. / *colour	<p>9318251xx</p> <table style="width: 100%; text-align: center;"> <tr> <td></td> <td></td> <td></td> <td></td> <td></td> <td></td> </tr> <tr> <td>00 black</td> <td>01 red</td> <td>02 blue</td> <td>03 yellow</td> <td>04 green</td> <td>07 white</td> </tr> </table> <p style="text-align: right;">Ni</p>							00 black	01 red	02 blue	03 yellow	04 green	07 white
00 black	01 red	02 blue	03 yellow	04 green	07 white								
drawing													
technical data													
connection	screw terminal												
rated voltage ⁽¹⁾	30 VAC / 60 VDC												
measurement cat. acc. to IEC 61010	O ⁽³⁾												
rated current ⁽¹⁾ (consider derating curve)	16 A												
material plug	brass, nickel plated												
housing material	POM												
temperature range acc. To IEC61010 ⁽²⁾	-25 °C to +80 °C												
standard	IEC 61010												

⁽¹⁾ for normal environmental conditions -5°C to +40°C

⁽²⁾ contact the manufacturer for applications at deviating temperature ranges

⁽³⁾ Other circuits that are not directly connected to mains

stand: 26.07.2018