

MATERIAL

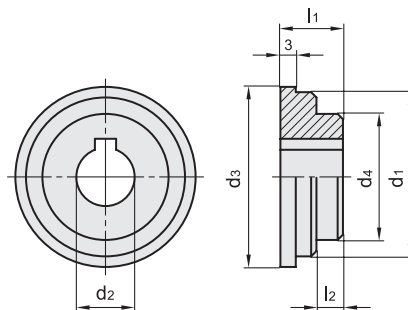
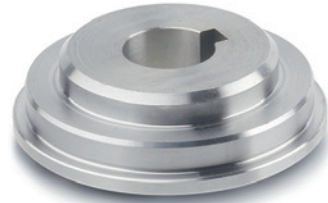
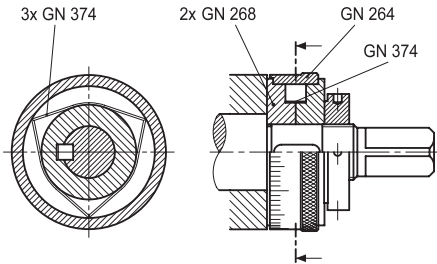
Natural steel.

H7 reamed hole and keyway in compliance with DIN 6885/1 tolerance P9 (see page A-15).

FEATURES AND APPLICATIONS

GN 268 flanges are designed to optimize use of graduated rings GN 264 (see page 612) and flat springs GN 374 (see page 614).

Control mechanisms composition



Code	Description	d1 f7	d2 H7	d3	d4	l1	l2	N°1 Scale ring	N°3 Flat springs	⚖
GN.56813	GN 268-24-K12	24	12	26.7	18	13.5	5.5	GN 264-30	GN 374-0,3-10	28
GN.56814	GN 268-32-K14	32	14	35.7	25	13.5	5.5	GN 264-40	GN 374-0,4-10	58
GN.56815	GN 268-32-K16	32	16	35.7	25	13.5	5.5	GN 264-40	GN 374-0,4-10	51
GN.56816	GN 268-50-K16	50	16	54.7	38	14.5	5.5	GN 264-60	GN 374-0,6-10	169
GN.56818	GN 268-68-K16	68	16	74.7	50	14.5	5.5	GN 264-80	GN 374-0,8-10	325
GN.56819	GN 268-68-K22	68	22	74.7	50	14.5	5.5	GN 264-80	GN 374-0,8-10	304

- 1
- 2
- 3
- 4
- 5
- 6**
- 7
- 8
- 9
- 10
- 11
- 12
- 13
- 14
- 15
- 16
- 17
- 18

Control elements