

# QR1-S standard series

- Elbow fitting
- External thread
- M5 G 1/8 G 1/4 G 3/8 G 1/2
- push-in fitting
- Ø 4 Ø 6 Ø 8 Ø 10 Ø 12 Ø 14 Ø 16
- QR1-S-RVT



Working pressure min./max.

-0,95 ... 10 bar

Ambient temperature min./max.

0 ... 60 °C

Weight

See table below

## Technical data

Part No.	Port G	Port D	Delivery unit	Weight
2122004050	M5	Ø 4	10 piece	0,006 kg
2122006050	M5	Ø 6	10 piece	0,006 kg
2122004180	G 1/8	Ø 4	10 piece	0,012 kg
2122006180	G 1/8	Ø 6	10 piece	0,013 kg
2122008180	G 1/8	Ø 8	10 piece	0,015 kg
R412005094	G 1/8	Ø 10	10 piece	0,028 kg
R412005095	G 1/8	Ø 12	10 piece	0,039 kg
2122004140	G 1/4	Ø 4	10 piece	0,017 kg
2122006140	G 1/4	Ø 6	10 piece	0,019 kg
2122008140	G 1/4	Ø 8	10 piece	0,023 kg
2122010140	G 1/4	Ø 10	10 piece	0,029 kg
2122012140	G 1/4	Ø 12	10 piece	0,042 kg
R412005092	G 3/8	Ø 6	10 piece	0,031 kg
2122008380	G 3/8	Ø 8	10 piece	0,033 kg
2122010380	G 3/8	Ø 10	10 piece	0,04 kg
2122012380	G 3/8	Ø 12	10 piece	0,044 kg
2122014380	G 3/8	Ø 14	5 piece	0,048 kg
R412005097	G 3/8	Ø 16	5 piece	0,061 kg
R412005093	G 1/2	Ø 8	10 piece	0,049 kg
2122010120	G 1/2	Ø 10	10 piece	0,05 kg
2122012120	G 1/2	Ø 12	10 piece	0,056 kg
2122014120	G 1/2	Ø 14	5 piece	0,066 kg
R412005098	G 1/2	Ø 16	5 piece	0,076 kg

Weight per piece

## Technical information

The series QR1 (plastic) and QR2 (metal) can not be combined  
Thread seal with captive O-ring

For further information about assembling and tolerances of adaptable tubing can be found in the "Technical information" document (available in the MediaCentre).

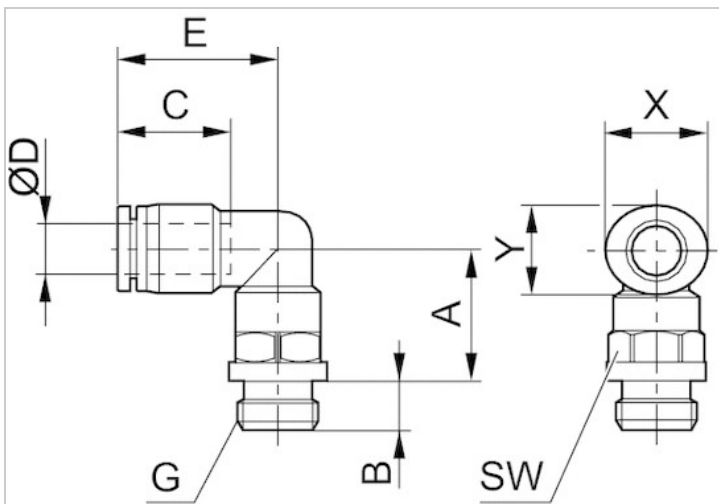
## Technical information

### Material

Material	nickel-plated
Housing	Polybutyleneterephthalate
Seal	Acrylonitrile butadiene rubber
Tooth lock washer	Stainless steel
Release ring	Polyoxymethylene
Release ring holder	Die cast zinc Brass, nickel-plated
Thread	Brass, nickel-plated

## Dimensions

### Dimensions



## Dimensions

Part No.	Port D	Port G	A	B	C	E	SW	X	Y
2122004050	Ø 4	M5	11.2	4	16	18.7	8	10	12
2122006050	Ø 6	M5	12.2	4	16	20	8	14	12
2122004180	Ø 4	G 1/8	9.5	5	16	18.5	13	12	10
2122006180	Ø 6	G 1/8	10.7	5	17	20.3	13	14	12
2122008180	Ø 8	G 1/8	14.4	5	18.5	22.6	13	16	14
R412005094	Ø 10	G 1/8	16.5	5	21	27	16	19	17

Part No.	Port D	Port G	A	B	C	E	SW	X	Y
R412005095	Ø 12	G 1/8	18.2	5	22.5	29.2	16	23	21
2122004140	Ø 4	G 1/4	9.5	6	16	18.5	16	12	10
2122006140	Ø 6	G 1/4	10.7	6	17	20.3	16	14	12
2122008140	Ø 8	G 1/4	11.5	6	18.5	22.6	16	16	14
2122010140	Ø 10	G 1/4	16.5	6	21	27	16	19	17
2122012140	Ø 12	G 1/4	18.3	6	22.5	29.2	16	23	21
R412005092	Ø 6	G 3/8	11.2	7	17	20.3	20	14	12
2122008380	Ø 8	G 3/8	11.5	7	18.5	22.6	20	16	14
2122010380	Ø 10	G 3/8	13.6	7	21	27	20	19	16
2122012380	Ø 12	G 3/8	15.3	7	22.5	29.2	20	23	21
2122014380	Ø 14	G 3/8	23.1	7	24.6	32.1	20	25	23
R412005097	Ø16	G 3/8	24.2	7	24.8	33.3	20	27	24
R412005093	Ø 8	G 1/2	12.5	8.5	18.5	22.6	24	16	14
2122010120	Ø 10	G 1/2	14.1	8.5	21	27	24	19	14
2122012120	Ø 12	G 1/2	15.8	8.5	22.5	29.2	24	23	21
2122014120	Ø 14	G 1/2	17.1	8.5	24.6	32.1	24	25	23
R412005098	Ø16	G 1/2	18.2	8.5	24.8	33.3	24	27	24