

## Angular Drive OW3, Ratio 1:1

**Material:** Housing made from zinc die-cast ZnAl4Cu1. Shafts made from stainless steel 1.4301 (AISI 304), dismountable. Bevel gears from polyacetal resin, injection-moulded.



- Open angular gear drive, ratio 1:1, 3 versions, 6 sizes.
- Suitable for lower torques and intermittent use.
- Shafts running directly in the self-lubricating housing material.
- Easy to mount and maintenance-free.

Shaft angle = 90°. Number of teeth = 16/16.

Temperature range - 20°C to +100° C.

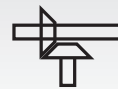
Ordering details: e.g.:

Art.-Nr. 410 357 10, Angular drive OW3, version 20, shaft-Ø d=5mm

Version 20



Version 30 L



Version 30 R



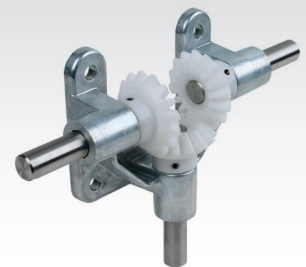
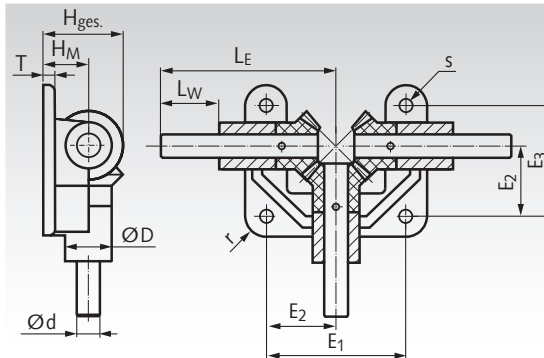
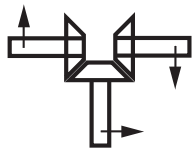
Product No. Vers. 20	Product No. Vers. 30 L	Product No. Vers. 30 R	d mm	D mm	E <sub>1</sub> mm	E <sub>2</sub> mm	E <sub>3</sub> mm	H <sub>Ges</sub> mm	H <sub>M</sub> mm	L <sub>E</sub> mm	L <sub>W</sub> mm	r mm	s mm	T mm	Module mm	T <sub>max</sub> * Ncm	Weight ≈ g
410 357 10	410 358 10	410 359 10	5 <sup>h9</sup>	12	38,8	19,4	32	18,8	10	50	15	6	4,8	4	1	8,3	84
410 357 15	410 358 15	410 359 15	8 <sup>h9</sup>	18	56,8	28,4	45	28,2	15	70	20	9	5,8	5	1,5	29	250
410 357 20	410 358 20	410 359 20	10 <sup>h6</sup>	22	70	35	55	37,5	20	90	30	11	7	6	2	73	490
410 357 25	410 358 25	410 359 25	12 <sup>h6</sup>	25	82	41	65	46,8	25	105	35	12,5	9	7	2,5	145	750
410 357 30	410 358 30	410 359 30	15 <sup>h6</sup>	30	95	47,5	75	56,2	30	120	40	15	9	8	3	250	1185
410 357 35	410 358 35	410 359 35	18 <sup>h6</sup>	33	108	54	85	65,7	35	135	45	16	11	9	3,5	440	1680

Material specifications see page 1057.

\*Basis for calculations see page 316.

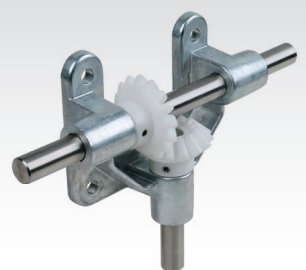
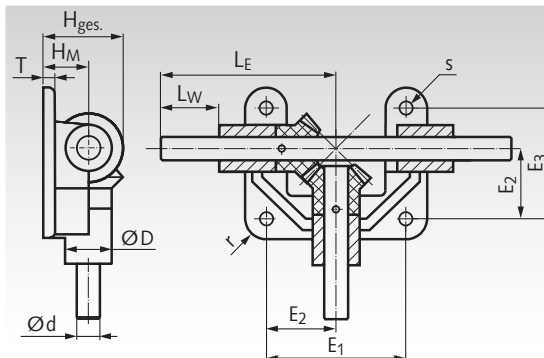
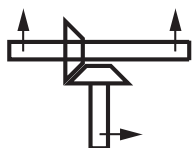
### Version 20

**Version 20:** Three shafts with three bevel gears. Two shafts are in line and have an opposite sense of rotation. The shaft for the power input and its sense of rotation be chosen freely.



### Version 30 L

**Version 30 L:** Two shafts with two bevel gears. On the long, straight-through shaft, the bevel gear is at the left side, referred to the short shaft. The shaft for the power input and its sense of rotation can be chosen freely.



### Version 30 R

**Version 30 R:** Two shafts with two bevel gears. On the long, straight-through shaft, the bevel gear is at the right side, referred to the short shaft. The shaft for the power input and its sense of rotation can be chosen freely.

