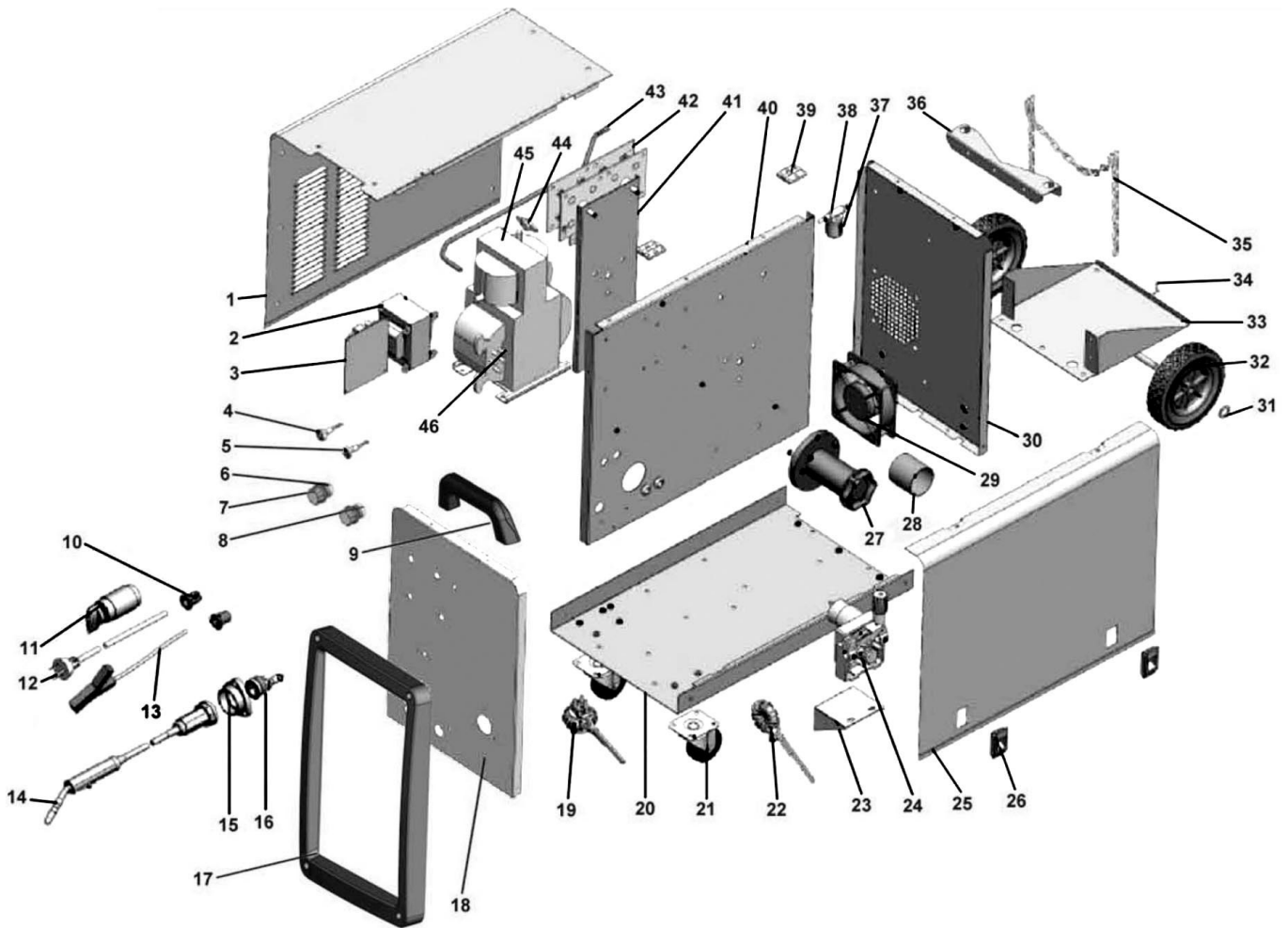




Parts Information:  
Professional MIG Welder 200Amp 230V  
with Binzel® Euro Torch  
Model No: SUPERMIG200



**NOTE:** It is our policy to continually improve products and as such we reserve the right to alter data, specifications and component parts without prior notice.

**IMPORTANT:** No liability is accepted for incorrect use of product.

**WARRANTY:** Guarantee is 12 months from purchase date, proof of which will be required for any claim.

Sealey Group, Kempson Way, Suffolk Business Park, Bury St Edmunds, Suffolk. IP32 7AR



01284 757500



01284 703534



sales@sealey.co.uk



www.sealey.co.uk



Parts Information:  
**Professional MIG Welder 200Amp 230V  
with Binzel® Euro Torch  
Model No: SUPERMIG200**

1	SMIG200.01	SIDE PANEL, LEFT
2	SMIG230.02	CONTROL TRANSFORMER
3	SMIG230.03	CONTROL PCB
4	SMIG230.04	INDICATOR (GREEN)
5	SMIG230.05	INDICATOR (YELLOW)
6	SMIG180.V3-06	POTENTIOMETER
7	PMIG6035S.W25	POTENTIOMETER KNOB
8	SMIG180.V3-08	POTENTIOMETER (c/w SWITCH)
9	SMIG230.09	HANDLE
10	250XTD.28	CABLE HOLDER
11	SMIG200.11	SWITCH
12	SMIG230.12	POWER LEAD
13	SMIG230.13	EARTH CABLE
14	SMIG200.14	MIG TORCH TB15
15	SMIG275.24	TORCH HOLDER
16	SMIG230.16	EURO CONNECTOR
17	SMIG230.17	FRONT FRAME
18	SMIG200.18	FRONT PANEL
19	SMIG230.19	EMC
20	SMIG230.20	BOTTOM PANEL
21	SMIG230.21	WHEEL,CASTOR (63x8x25x82)
22	SMIG230.22	WIRE FEED ASS'Y
23	SMIG230.23	WIRE FEED PLATE
24	SMIG230.24	WIRE FEED MOTOR
25	SMIG200.25	SIDE PANEL, RIGHT
26	SMIG200.26	DOOR LATCH

Item	Part No.	Description
27	SMIG275.45	SPOOL HOLDER
28	SMIG180.V3-28	SPOOL SPACER
29	180XT.19	FAN
30	SMIG230.30	BACK PANEL
31	FWM12.S	FLAT WASHER M12 SINGLE
32	SMIG230.32	WHEEL, FIXED (151x12x36)
33	SMIG230.33	GAS CYLINDER BRACKET
34	SMIG150.V3-26	PIN
35	SMIG180.V3-35	CHAIN
36	SMIG230.36	GAS CYLINDER SUPPORT
37	SMIG200.37	GAS VALVE CONNECTOR
38	SMIG200.38	GAS VALVE
39	SMIG275.12	PLASTIC HINGE
40	SMIG230.40	MIDDLE PANEL
41	SMIG230.41	SPOOL HOLDER PANEL
42	SMIG230.42	RECTIFIER (LSA)
43	SMIG200.43	GAS HOSE (4.5mm ID x 1m)
44	SMIG180.V3-44	THERMAL RELAY
45	SMIG230.45	REACTANCE
46	SMIG200.46	TRANSFORMER (MAIN)
--	SMIG275.12	PLASTIC HINGE (NOT SHOWN)
--	MMIG.CFS	FLANGE HEAD SET SCREW M6x12 (NOT SHOWN)
--	MIG/GH	HOSE (NOT SHOWN)

**NOTE:** It is our policy to continually improve products and as such we reserve the right to alter data, specifications and component parts without prior notice.

**IMPORTANT:** No liability is accepted for incorrect use of product.

**WARRANTY:** Guarantee is 12 months from purchase date, proof of which will be required for any claim.

**Sealey Group**, Kempson Way, Suffolk Business Park, Bury St Edmunds, Suffolk. IP32 7AR



01284 757500



01284 703534



sales@sealey.co.uk



www.sealey.co.uk