

STANDARD EXECUTIONS

- DIN 580-NI: AISI 304 stainless steel.
- DIN 580-A4: AISI 316 stainless steel.

FEATURES AND APPLICATIONS

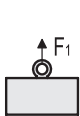
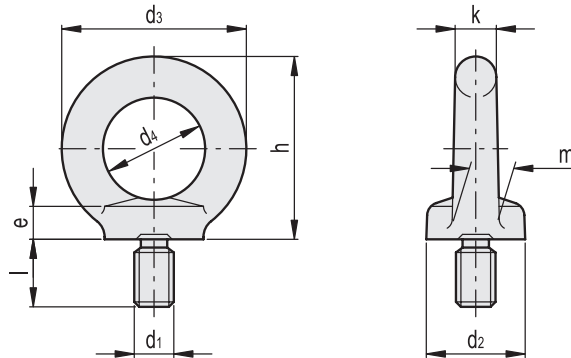
The use of DIN 580 lifting eye bolts must take place under the following conditions:

- the length of the thread of the assembly hole must be equal to the length of the thread of the pin of the eyebolt;
- the pin of the eyebolt must be fully screwed up to the stop on the mounting surface;
- the material of the mounting surface must have the same mechanical features of the eyebolt;
- do not exceed the maximum load values indicated in the table.

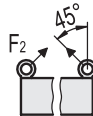
Further technical information available in "Operating instructions".

SPECIAL EXECUTIONS ON REQUEST

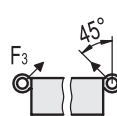
Executions in C15 E zinc-plated steel (DIN 580-ST).



Axial load-bearing capacity per eye bolt



Load-bearing capacity at max. 45° per eye bolt



Lateral load-bearing capacity at max. 45° per eye bolt



Do not use under shear tension

DIN 580-NI



Code	Description	d1	d2	d3	d4	h	m	l	k	e	F1 max. [N]	F2 max. [N]	F3 max. [N]	⚖️
GN.21401	DIN 580-M8-NI	M8	20	36	20	36	10	13	8	6	1400	100	700	55
GN.21416	DIN 580-M10-NI	M10	25	45	25	45	12	17	10	8	2300	1700	1150	110
GN.21426	DIN 580-M12-NI	M12	30	54	30	53	14	20.5	12	10	3400	2400	1700	160
GN.21436	DIN 580-M16-NI	M16	35	63	35	62	16	27	14	12	7000	5000	3500	280
GN.21446	DIN 580-M20-NI	M20	40	72	40	71	19	30	16	14	12000	8600	6000	440
GN.21456	DIN 580-M24-NI	M24	50	90	50	90	24	36	20	18	18000	12900	9000	840

DIN 580-A4



Code	Description	d1	d2	d3	d4	h	m	l	k	e	F1 max. [N]	F2 max. [N]	F3 max. [N]	⚖️
GN.21411	DIN 580-M10-A4	M10	25	45	25	45	12	17	10	8	2300	1700	1150	102
GN.21421	DIN 580-M12-A4	M12	30	54	30	53	14	20.5	12	10	3400	2400	1700	172
GN.21431	DIN 580-M16-A4	M16	35	63	35	62	16	27	14	12	7000	5000	3500	312
GN.21441	DIN 580-M20-A4	M20	40	72	40	71	19	30	16	14	12000	8600	6000	439
GN.21451	DIN 580-M24-A4	M24	50	90	50	90	24	36	20	18	18000	12900	9000	918



Machine elements