

MATERIAL

Aluminium, matte finish.
AISI 304 stainless steel screws and nuts.

STANDARD EXECUTIONS

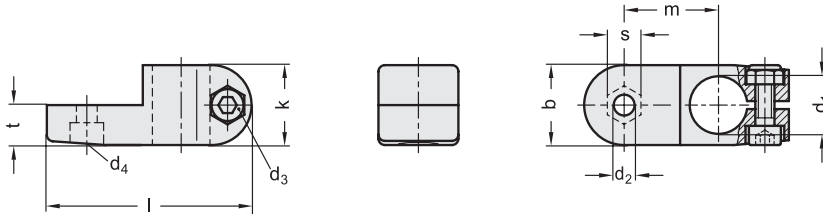
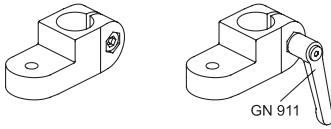
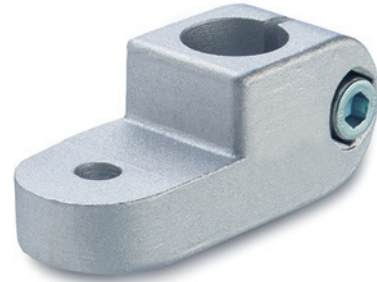
- **GN 273-SW:** natural aluminium.
- **GN 273-SW:** aluminium, epoxy resin coating, RAL 9005 black colour.

FEATURES AND APPLICATIONS

The assembly hole of GN 273 connecting clamps allows an excellent match with tubes GN 990 (see page 1778).

GN 273 bases can be assembled with pivoting connecting clamps GN 271 (see page 1751), GN 275 (see page 1756) or GN 277 (see page 1757).

The clamping screws d3 may be replaced by clamping kits GN 911 (see page 1782).



GN 273-BL

Code	Description	b	d1	d2	d3	d4	k	l	m	t	s	d3 Clamping kit	⚖️
GN.57411	GN 273-B12-2-BL	25	12	6.5	M6	M6	25	64	29.5	12.5	10	GN 911-M6-22	65
GN.57431	GN 273-B14-2-BL	25	14	6.5	M6	M6	25	64	29.5	12.5	10	GN 911-M6-22	62
GN.57451	GN 273-B16-2-BL	25	16	6.5	M6	M6	25	64	29.5	12.5	10	GN 911-M6-22	60
GN.57471	GN 273-B18-2-BL	25	18	6.5	M6	M6	25	64	29.5	12.5	10	GN 911-M6-22	55

GN 273-SW

Code	Description	b	d1	d2	d3	d4	k	l	m	t	s	d3 Clamping kit	⚖️
GN.57416	GN 273-B12-2-SW	25	12	6.5	M6	M6	25	64	29.5	12.5	10	GN 911-M6-22	65
GN.57436	GN 273-B14-2-SW	25	14	6.5	M6	M6	25	64	29.5	12.5	10	GN 911-M6-22	62
GN.57456	GN 273-B16-2-SW	25	16	6.5	M6	M6	25	64	29.5	12.5	10	GN 911-M6-22	60
GN.57476	GN 273-B18-2-SW	25	18	6.5	M6	M6	25	64	29.5	12.5	10	GN 911-M6-22	55

