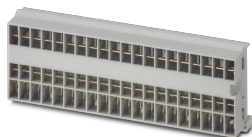


Busbar - CAPAROC CR 20 - 1110989

Please be informed that the data shown in this PDF Document is generated from our Online Catalog. Please find the complete data in the user's documentation. Our General Terms of Use for Downloads are valid (<http://phoenixcontact.com/download>)

Busbar for CAPAROC system with 20 slots. For installation on a DIN rail.




Your advantages

- ✓ The benchmark that you can customize with lengths that can be adapted to your requirements
- ✓ Particularly easy operation for everyone with the simple Plug and Play design
- ✓ Exceptionally easy design-in with universal busbars up to 45 A



Key Commercial Data

Packing unit	3 pc
GTIN	 4 063151 024697
GTIN	4063151024697
Weight per Piece (excluding packing)	49.390 g
Custom tariff number	85366990
Country of origin	Germany
Sales Key	CLA23Z

Technical data

Dimensions

Height	44 mm
Width	123.8 mm
Depth	22.5 mm (incl. DIN rail 7.5 mm)

Ambient conditions

Ambient temperature (operation)	-30 °C ... 65 °C (The temperature range of the power module must be taken into consideration)
Ambient temperature (storage/transport)	-40 °C ... 70 °C
Humidity test	96 h, 95 % RH, 40 °C
Altitude	≤ 4000 m (amsl (above mean sea level))

Busbar - CAPAROC CR 20 - 1110989

Technical data

Ambient conditions

Shock (operation)	30g (11 ms period, half-sine shock pulse, according to IEC 60068-2-27)
Vibration (operation)	5g (10 ... 150 Hz / 10 cycles / axis / X, Y, Z)
Degree of protection	IP20

General

Flammability rating according to UL 94	V-0
Mounting type	DIN rail: 35 mm
Color	light grey RAL 7035
Protection class	III
Degree of pollution	2

Electrical data

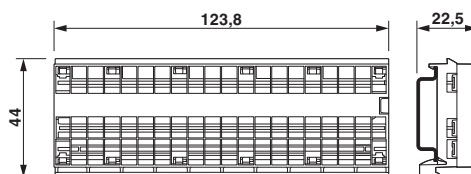
Rated voltage	24 V DC
Rated current I _N	45 A DC (Total current input)

Standards and Regulations

Standards/specifications	EN 61000-6-2 EMC – Immunity for industrial areas
	EN 61000-6-3 EMC – Emission for residential, business and commercial properties and small operations
	EN 60068-2-78 Environmental influences – Moisture and heat, constant
	EN 50178 Equipping power installations with electronic equipment
	EN 60068-2-6 Environmental influences – Vibrations (sinusoidal)
	EN 60068-2-27 Environmental influences – Shocks

Drawings

Dimensional drawing



Classifications

eCl@ss

eCl@ss 10.0.1	27140401
eCl@ss 11.0	27140401
eCl@ss 9.0	27141116

Approvals

Approvals

Busbar - CAPAROC CR 20 - 1110989

Approvals

Approvals

UL Listed / cUL Listed / cULus Listed

Ex Approvals

Approval details

UL Listed		http://database.ul.com/cgi-bin/XYV/template/LISEXT/1FRAME/index.htm	FILE E 123528
cUL Listed		http://database.ul.com/cgi-bin/XYV/template/LISEXT/1FRAME/index.htm	FILE E 123528
cULus Listed			

Accessories

Accessories

Device circuit breakers

Power module - CAPAROC PM PN - 1110986



Power module with PROFINET interface for supplying the CAPAROC circuit breaker system with 12 or 24 V DC. For DIN rail installation via the CAPAROC current rails.

Power module - CAPAROC PM S-R - 1115661



Power module with status output and reset input for supplying the CAPAROC circuit breaker system with 12 or 24 V DC. For DIN rail installation via the CAPAROC current rails.

Busbar - CAPAROC CR 20 - 1110989

Accessories

Electronic circuit breaker - CAPAROC E1 12-24DC/1-4A - 1115415



Single-channel electronic circuit breaker module for protecting 12 and 24 V DC loads against overload and short circuit. Nominal current adjustable from 1 A to 4 A via LED button. For DIN rail installation via the CAPAROC current rails.

Electronic circuit breaker - CAPAROC E1 12-24DC/1-10A - 1115649



Single-channel electronic circuit breaker module for protecting 12 and 24 V DC loads against overload and short circuit. Nominal current adjustable from 1 A to 10 A via LED button. For DIN rail installation via the CAPAROC current rails.

Electronic circuit breaker - CAPAROC E1 12-24DC/1A - 1157288



Single-channel electronic circuit breaker module for protecting 12 and 24 V DC loads against overload and short circuit. With fixed nominal current. For DIN rail installation via the CAPAROC current rails.

Electronic circuit breaker - CAPAROC E1 12-24DC/2A - 1157290



Single-channel electronic circuit breaker module for protecting 12 and 24 V DC loads against overload and short circuit. With fixed nominal current. For DIN rail installation via the CAPAROC current rails.

Electronic circuit breaker - CAPAROC E1 12-24DC/4A - 1157285



Single-channel electronic circuit breaker module for protecting 12 and 24 V DC loads against overload and short circuit. With fixed nominal current. For DIN rail installation via the CAPAROC current rails.

Busbar - CAPAROC CR 20 - 1110989

Accessories

Electronic circuit breaker - CAPAROC E1 12-24DC/6A - 1157286



Single-channel electronic circuit breaker module for protecting 12 and 24 V DC loads against overload and short circuit. With fixed nominal current. For DIN rail installation via the CAPAROC current rails.

Electronic circuit breaker - CAPAROC E1 12-24DC/8A - 1157279



Single-channel electronic circuit breaker module for protecting 12 and 24 V DC loads against overload and short circuit. With fixed nominal current. For DIN rail installation via the CAPAROC current rails.

Electronic circuit breaker - CAPAROC E1 12-24DC/10A - 1157284



Single-channel electronic circuit breaker module for protecting 12 and 24 V DC loads against overload and short circuit. With fixed nominal current. For DIN rail installation via the CAPAROC current rails.

Electronic circuit breaker - CAPAROC E2 12-24DC/1-4A - 1115655



Two-channel electronic circuit breaker module for protecting 12 and 24 V DC loads against overload and short circuit. Nominal current adjustable from 1 A to 4 A via step switch. For DIN rail installation via the CAPAROC current rails.

Electronic circuit breaker - CAPAROC E2 12-24DC/2-10A - 1110984



Two-channel electronic circuit breaker module for protecting 12 and 24 V DC loads against overload and short circuit. Nominal current adjustable from 2 A to 10 A via step switch. For DIN rail installation via the CAPAROC current rails.

Busbar - CAPAROC CR 20 - 1110989

Accessories

Electronic circuit breaker - CAPAROC E4 12-24DC/1-4A - 1115657



Four-channel electronic circuit breaker module for protecting 12 and 24 V DC loads against overload and short circuit. Nominal current adjustable from 1 A to 4 A via LED button. For DIN rail installation via the CAPAROC current rails.

Electronic circuit breaker - CAPAROC E4 12-24DC/1-10A - 1115658



Four-channel electronic circuit breaker module for protecting 12 and 24 V DC loads against overload and short circuit. Nominal current adjustable from 1 A to 10 A via LED button. For DIN rail installation via the CAPAROC current rails.

Potential distributors - CAPAROC PD 0V - 1110987



Potential distributor with Push-in connections for directly connecting the 0 V return conductor in the CAPAROC system. For DIN rail installation via the CAPAROC current rails.

Additional products

Busbar - CAPAROC CR EXT20 - 1115674



Extension busbar with 20 slots for the CAPAROC system. For installation on a DIN rail.

Busbar - CAPAROC CR EXT8 - 1110990



Extension busbar with 8 slots for CAPAROC system. For installation on a DIN rail.

Busbar - CAPAROC CR 20 - 1110989

Accessories

Busbar - CAPAROC CR EXT4 - 1110991



Extension busbar with 4 slots for the CAPAROC system. For installation on a DIN rail.

Metal part - CAPAROC CR CON - 1270955



Metal extension rails from connecting CAPAROC initial busbars.
