

## Single Point Lubrication System perma STAR VARIO

**Material:** Housing: Plastic.

Fully automatic, independent of temperature and pressure. Extremely precise dispensing behaviour. The system consists of an electromechanical drive unit, a cartridge with 60, 120 or 250 cm<sup>3</sup> of lubricant, a support and a battery set. The pressure build-up of 7.5 bar enables remote mounting at a distance up to 5 metres. LCD display with setting button shows dispensing time, cartridge size and operating status. LED signals for function and any faults.

**Application range:** For single-point lubrication of roller and plain bearings, sliding guides, open gears, gear racks, spindles, shaft seals and chains.

**SFO1:** Modern designed multi-purpose grease. Water-resistant, oxidation-stable. Good wear and corrosion protection. Based on lithium / calcium.

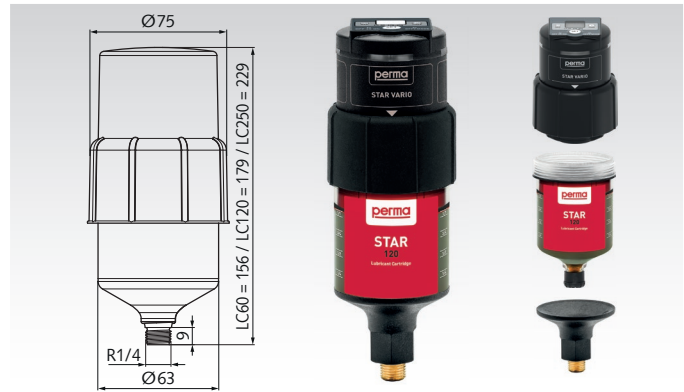
**SO32:** High-performance gear and multi-purpose oil based on based on mineral oil. Good wear and corrosion protection.

**Temperature range:** -20°C to +60°C.

**Please note:** Drive unit, cartridge, support and battery set must be ordered separately.

On request we also supply cartridge LC500 with 500cm<sup>3</sup>. Operating instructions at [www.maedler.de](http://www.maedler.de)

Ordering Details: e.g: Product No. 68060001, Drive Unit



|                    |  |
|--------------------|--|
| Functionality      | Electromechanical  |
| Lubricant volume   | 60 cm <sup>3</sup> , 120 cm <sup>3</sup> , 250 cm <sup>3</sup> |
| Operating pressure | 7.5 bar  |
| Lubricants         | Greases up to NLGI 2 / oils                                    |
| Outlet Thread      | R1/4"  |
| Running time       | 1 to 24 months adjustable                                      |
| Protection class   | Grease-LC: IP 67 / Oil-LC: IP 65                               |
| max. hose line     | 3 m (grease) / 5 m (oil)                                       |

\*The maximum length of the hose line depends on the lubrication system, lubricant and operating temperature.

### Basic Article perma STAR VARIO

| Product No. | Description          | Weight kg |
|-------------|----------------------|-----------|
| 680 600 01  | Drive unit           | 0,36      |
| 680 600 02  | Battery set          | 0,08      |
| 680 600 03  | Support              | 0,04      |
| 680 547 00  | Oil retaining valve* | 0,03      |

\*Not required for grease lubrication.

### Cartridges (LC-Units) for perma STAR VARIO

| Product No. | Description                                      | Weight kg |
|-------------|--|-----------|
| 680 600 05  | Grease cartridge SF01 LC60 - 60cm <sup>3</sup>   | 0,13      |
| 680 600 06  | Grease cartridge SF01 LC120 - 120cm <sup>3</sup> | 0,20      |
| 680 600 07  | Grease cartridge SF01 LC250 - 250cm <sup>3</sup> | 0,36      |
| 680 600 08  | Oil cartridge SO32 LC60 - 60cm <sup>3</sup>      | 0,13      |
| 680 600 09  | Oil cartridge SO32 LC120 - 120cm <sup>3</sup>    | 0,20      |
| 680 600 10  | Oil cartridge SO32 LC250 - 250cm <sup>3</sup>    | 0,36      |

### Mounting Clamp 30mm and Bracket STAR G1/4i



Ordering Details: e.g: Product No. 68060011

| Product No. | Description | Weight kg |
|-------------|-------------|-----------|
| 680 600 11  | Clamp       | 0,21      |
| 680 600 12  | Bracket     | 0,22      |

**Material:** Stainless steel.

Mounting clamp dimensions:

Clamp width: 30 mm, sheet thickness: 6 mm. Height: 40 mm.

Bracket dimensions:

Length: 103.6 mm, width: 88 mm. Height: 43 mm.

### Polyamide Hose, Outer-Ø 8mm, Inner-Ø 6mm



Ordering Details: e.g: Product No. 86980801 Polyamide hose Ø 8/6 mm, natural, length (max. length 100 m)

| Product No. | Colour  | Weight g/m |
|-------------|---------|------------|
| 869 808 01  | Natural | 30         |
| 869 808 03  | Black   | 30         |

**Material:** Polyamide.

- Open-length.
- Diameter: 8/6 mm
- Bending radius min. 50mm.
- Operating pressure at 20°C: max. 19 bar.
- Operating pressure at 60°C: max. 10.8 bar.

**Temperature range:** -35°C to +60°C.

### Flush Connection with Ball Valve R1/4a x G1/4i



Ordering Details: e.g: Product No. 68060013, Flush connection with ball valve, brass

| Product No. | Type            | Length mm | Weight g |
|-------------|-----------------|-----------|----------|
| 680 600 13  | Brass           | 98        | 228      |
| 680 600 14  | Stainless steel | 98        | 207      |

**Material:** Nickel-plated brass.  
Stainless steel.

For manual initial and re-lubrication to protect perma lubrication systems from damage.

### Hose Prefill Adapter Set for Hose-Ø 6mm and 8mm



Ordering Details: Product No. 68060015, Hose prefill adapter set

| Product No. | Length mm | Weight g |
|-------------|-----------|----------|
| 680 600 15  | max. 85   | 208      |

Filling set with conical and flat grease nipples. Hoses must be pre-filled so that the lubricant reaches the lubrication point immediately.

## Hose Connectors for Ø 8mm



Ordering Details: e.g: Product No. 68057901,  
hose connector Ø 8mm, G1/8a

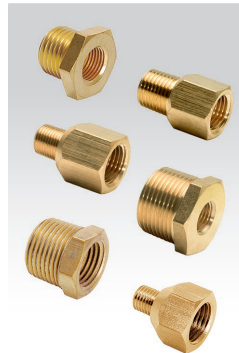
| Product No. | Type                | Weight<br>g |
|-------------|---------------------|-------------|
| 680 579 01  | G1/8a - straight    | 15          |
| 680 579 02  | G1/8a 90° - angled  | 22          |
| 680 579 03  | G1/4a - straight    | 14          |
| 680 579 04  | G1/4i - straight    | 23          |
| 680 579 05  | G1/4a 90° - angled  | 25          |
| 680 579 06  | G3/8a - straight    | 19          |
| 680 579 07  | M6a - straight      | 13          |
| 680 579 08  | M6a 90° - angled    | 21          |
| 680 579 09  | M8x1a - straight    | 15          |
| 680 579 10  | M8x1a 90° - angled  | 23          |
| 680 579 11  | M10x1a - straight   | 15          |
| 680 579 12  | M10x1a 90° - angled | 24          |

**Material:** Brass, nickel-plated.

Suitable for hose Ø 8 mm, up to 25 bar. Connection piece for simple connection of hose and lube port.

a = external thread i = internal thread

## Reducers / Reducer Couplings



Ordering Details: e.g: Product No. 68057930,  
Reducer G1/4a x G1/8i

| Product No. | Type           | Weight<br>g |
|-------------|----------------|-------------|
| 680 579 30  | G1/4a x G1/8i  | 11          |
| 680 579 31  | G1/8a x G1/4i  | 20          |
| 680 579 32  | R1/2a x G1/4i  | 36          |
| 680 579 33  | R1/4a x G1/4i  | 20          |
| 680 579 34  | R1/8a x G1/4i  | 22          |
| 680 579 35  | R3/4a x G1/4i  | 65          |
| 680 579 36  | R3/8a x G1/4i  | 13          |
| 680 579 37  | M6a x G1/4i    | 17          |
| 680 579 38  | M8a x G1/4i    | 17          |
| 680 579 39  | M8x1a x G1/4i  | 16          |
| 680 579 40  | M10a x G1/4i   | 19          |
| 680 579 41  | M10x1a x G1/4i | 19          |

**Material:** Brass.

An additional sealing tape should be used to seal the threads (commercially available PTFE tape or similar).

a = external thread i = internal thread