

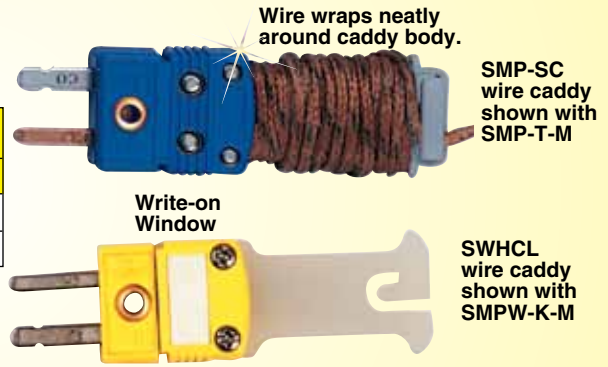
Connector Accessories

For Miniature Size Connectors

Wire Caddy (Spool Cap)

To Order Visit omega.com/smp-sc_mini_conn_acc for Pricing and Details

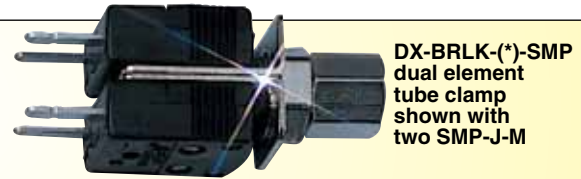
Model No.		Compatible Connectors
SMP-SC	pkg of 5	SMPW, HMPW
SWHCL	pkg of 20	SMPW, HMPW



Dual Element Tube Clamp

Model No.	Compatible Connectors
DX-BRLK-(*)-SMP	SMPW, HMPW

*Insert probe diameter: "116" for 1/16", or "118" for 1/8"



Ferrite Cable Clamp

Model No.	Compatible Connectors
PCLM-SMP-FT	SMPW, GMP, HGMP
PCLM-SMP-RSC-FT	HMPW, MTP



For miniature connectors with built-in ferrite, please visit omega.com, ferrite core included.

Cable Clamp

Model No.	Compatible Connectors
PCLM-SMP	SMPW, HMPW
PCLM-NMP	NMP
PCLM-GMP	GMP, HGMP
PCLM-SMP-RSC	SMPW, HMPW (larger size wire)
PCLM-SHX	SHX-MF



PCLM-SMP cable clamp shown with SMPW-J-M

Miniature Strain Relief Tubing

Model No.	Compatible Connectors
MSRT-116-(*)	SMPW, HMPW, GMP, HGMP
MSRT-332-(*)	
MSRT-532-10	

*Insert quantity: select from packages of 5, 10, 50, 100. Center number denotes tubing inside diameter: "316" for 3/16", "332" for 3/32", "532" for 5/32".



Rubber Boots

Model No.	Compatible Connectors
MRB	SMPW, HMPW
MRBS	SMPW, HMPW

MRB rated to 200° MRBS rated to 450°



Connector Accessories

For Miniature Size Connectors

Safety Clip

To Order Visit omega.com/smp-sc_mini_conn_acc for Pricing and Details

Model No.	Compatible Connectors
SMCL	SMPW, GMP, HMPW, HGMP
FMCL	FMP, FMPW, HFMP, HFMPW

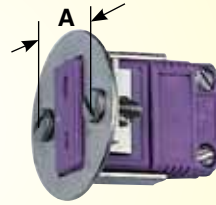
Safety clip SMCL

Shown with GMP-T-MF

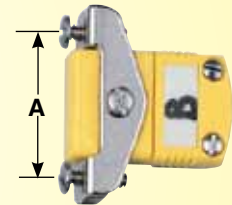


Panel Mounting Bracket (Standard and Round Hole)

Model No.	Compatible Connectors	"A" Dimension
SMACL	SMPW, GMP, HMPW, HGMP	0.88"
MACL	NMP	0.88"
SRMACL	SMPW, GMP, HMPW, HGMP	0.67"
RMACL	NMP	0.67"



SRMACL round hole panel mounting bracket.



SMACL panel mounting bracket.

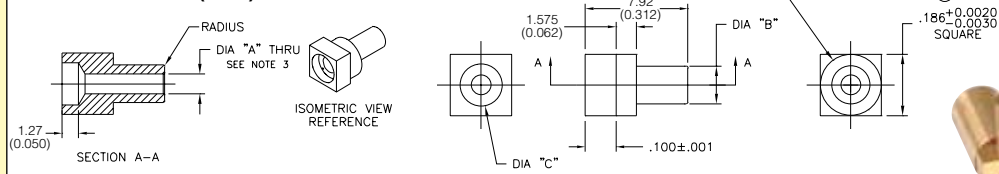
Wire Hole Reducer—For Smaller Gauge Wires SMPW Connectors

Model No.	Pkg of 20	Reduced Hole Opening
RB-SMP-100		2.54 (0.100") Dia.
RB-SMP-140		3.55 (0.140") Dia.



RB-SMP-100 wire hole reducers shown with SMPW-K-M

Dimensions: mm (inch)



Crimp Style Bushing

Model Number	Dia A-ID mm (in)	Dia B-OD mm (in)	Dia C mm (in)	Dia E mm (in)	Compatible Connectors
(*)B-SMP-CR020-(**)	0.56(0.022)	2.95 (0.116)	3.25 (0.128)	4.72 (0.186)	SHX, NMP, MTP, GMP, SMP, SMPW, FMPW
(*)B-SMP-CR032-(**)	0.89 (0.035)	2.95 (0.116)	3.25 (0.128)	4.72 (0.186)	
(*)B-SMP-CR040-(**)	1.09 (0.043)	2.95 (0.116)	3.25 (0.128)	4.72 (0.186)	
(*)B-SMP-CR1.5MM-(**)	1.57 (0.062)	2.95 (0.116)	3.25 (0.128)	4.72 (0.186)	
(*)B-SMP-CR062-(**)	1.65 (0.065)	2.95 (0.116)	3.25 (0.128)	4.72 (0.186)	
(*)B-SMP-CR093-(**)	2.44 (0.096)	4.72 (0.186)	3.96 (0.156)	N/A	
(*)B-SMP-CR3.0mm-(**)	3.10 (0.122)	4.72 (0.186)	3.96 (0.156)	N/A	
(*)B-SMP-CR125-(**)	3.25 (0.128)	4.72 (0.186)	3.96 (0.156)	N/A	

(*) Insert "B" for brass or "S" for stainless steel
 (**) Insert quantity: "10" or "100." "CR" number indicates compatible probe diameter.

To order crimping tool for use with these bushings, specify model number **BB-SMT-CT**.

Ordering Example: **SB-SMP-CR040-100**, pkg of 100 crimp style stainless steel bushing for 0.043 Dia. probe.

Clamp Grommets Silicone 0.25" long

Model No.	Inside Diameter	Outside Diameter	Length	Compatible Connectors
SSRT-CC-018-(*)	3.18 (0.125)	4.77 (0.188)	6.35 (0.250)	OSTW male or female
SSRT-CC-332-(*)	2.38 (0.094)			
SSRT-CC-116-(*)	1.59 (0.063)			
SSRT-CC-132-(*)	0.79 (0.032)			

*Insert pkg quantity: select from packages of 5, 10, 50, 100.

Center number denotes grommet inside diameter for 0.75" long strain relief tubing, visit omega.com



PATENTED

Covered by U.S. and International patents and pending applications.