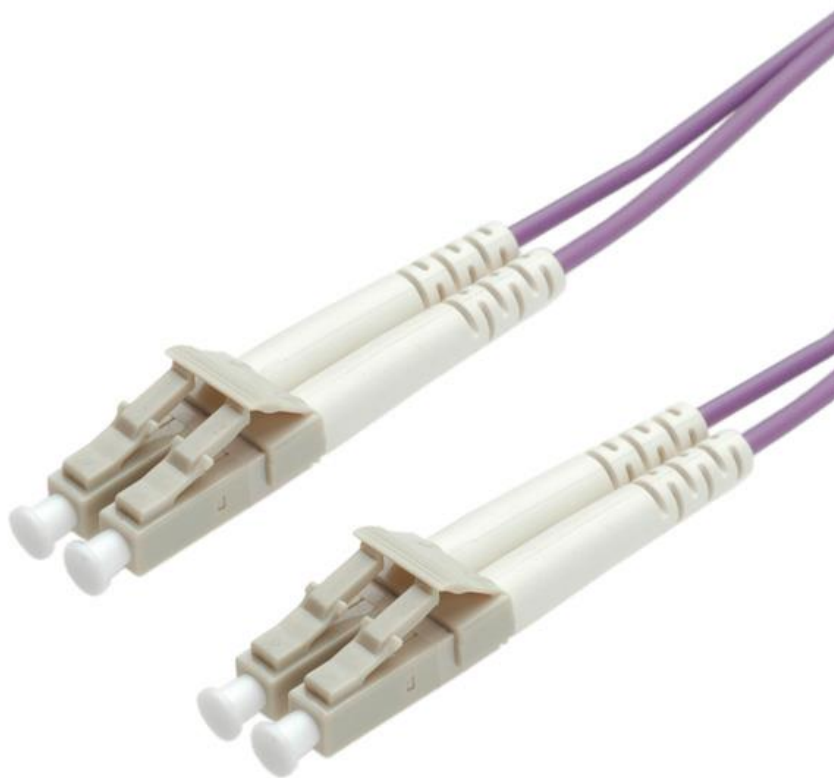




Datenblatt - Fiche technique - Data sheet

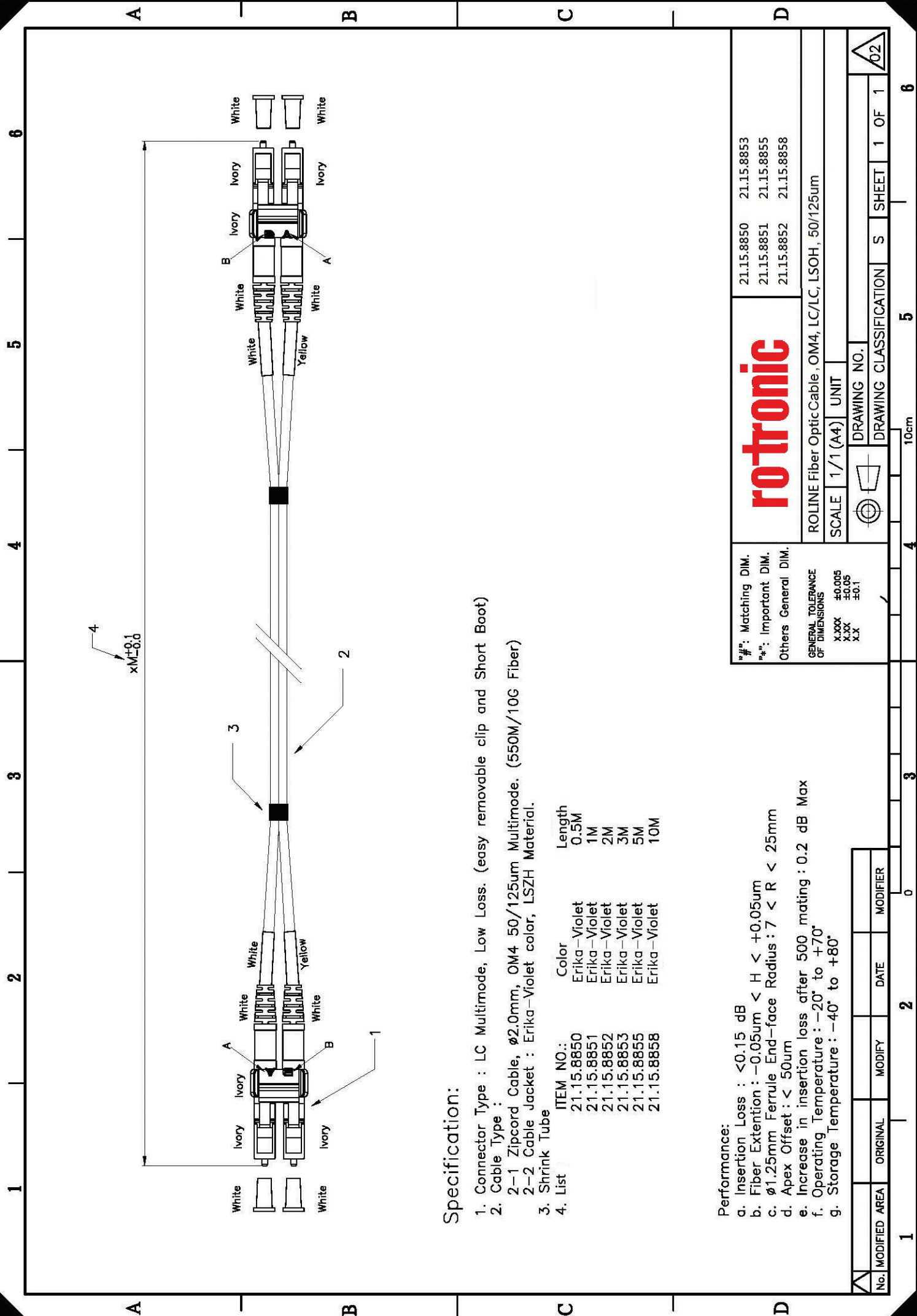
**21.15.8855**



ROLINE LWL-Kabel 50/125 $\mu$ m OM4, LC/LC, Low-Loss-Stecker, 5m

ROLINE Câble FO 50/125 $\mu$ m OM4, LC/LC, connecteurs Low-Loss, 5m

ROLINE FO Jumper Cable 50/125 $\mu$ m OM4, LC/LC, Low-Loss-Connector, 5m



**Specification:**

1. Connector Type : LC Multimode, Low Loss. (easy removable clip and Short Boot)
2. Cable Type :
  - 2-1 Zipcord Cable,  $\phi 2.0\text{mm}$ , OM4 50/125um Multimode. (550M/10G Fiber)
  - 2-2 Cable Jacket : Erika-Violet color, LSZH Material.
3. Shrink Tube
4. List
 

ITEM NO.:	Color	Length
21.15.8850	Erika-Violet	0.5M
21.15.8851	Erika-Violet	1M
21.15.8852	Erika-Violet	2M
21.15.8853	Erika-Violet	3M
21.15.8855	Erika-Violet	5M
21.15.8858	Erika-Violet	10M

**Performance:**

- a. Insertion Loss :  $< 0.15 \text{ dB}$
- b. Fiber Extension :  $-0.05\text{um} < H < +0.05\text{um}$
- c.  $\phi 1.25\text{mm}$  Ferrule End-face Radius :  $7 < R < 25\text{mm}$
- d. Apex Offset :  $< 50\text{um}$
- e. Increase in insertion loss after 500 mating :  $0.2 \text{ dB Max}$
- f. Operating Temperature :  $-20^\circ \text{ to } +70^\circ$
- g. Storage Temperature :  $-40^\circ \text{ to } +80^\circ$



*#: Matching DIM.	21.15.8850	21.15.8853
**#: Important DIM.	21.15.8851	21.15.8855
Others General DIM.	21.15.8852	21.15.8858

ROLINE Fiber Optic Cable, OM4, LC/LC, LSOH, 50/125um

SCALE 1/1 (A4) UNIT



DRAWING NO.

DRAWING CLASSIFICATION S SHEET 1 OF 1



10cm

No.	MODIFIED AREA	ORIGINAL	MODIFY	DATE	MODIFIER
1			2	0	