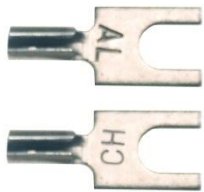
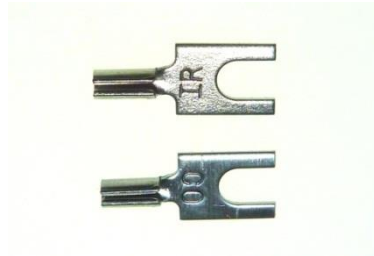


Datasheet

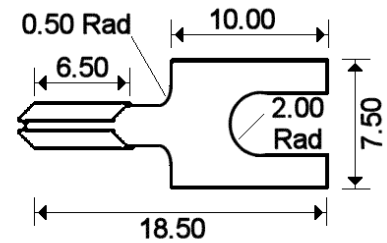
Thermocouple Spade Terminals - Crimp-on spade terminations in Thermocouple Types 'K' & 'J'



Thermocouple Type 'K' CH/AL



Thermocouple Type 'J' IR/CO



Thermocouple Spade Terminal

- Made from thermocouple material for Types 'K' or 'J'
- Code letters stamped on each termination to ensure correct thermocouple alloy type
- Crimp-on – for wires up to 18awg
- Supplied in packs of 20 pairs

T/C Type	+Positive Contact (alloy type)	Negative Contact (alloy type)	order Code
K	+Nickel Chromium (CH)	-Nickel Alloy (AL)	XF-1750-FAR
J	+Iron (IR)	-Copper Nickel (CO)	XF-1751-FAR