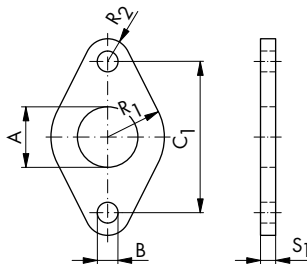


**Befestigungsflansch\***

Werkstoff: Stahl, Oberfläche schwarz



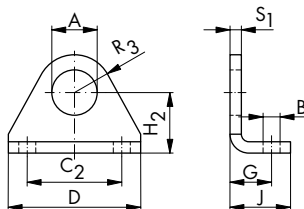
**Mounting Flange\***

Materials: steel, black surface

Best.-Nr. Order No.	Kolben Ø Piston dia.	A	B	C1	C2	D	E	F	G	H1	H2	J	P	R1	R2	R3	S1	T	U	V	W	X	Z	
26.305	12, 16	16	5,5	40										15	6		4							
28.305	20, 25	22	6,6	50										20	8		5							

**Befestigungswinkel\***

Werkstoff: Stahl, Oberfläche schwarz



**Mounting Bracket\***

Materials: steel, black surface

Best.-Nr. Order No.	Kolben Ø Piston dia.	A	B	C1	C2	D	E	F	G	H1	H2	J	P	R1	R2	R3	S1	T	U	V	W	X	Z	
23.312	8, 10	12	4,5		25	35			11		16	16				10	3							
26.302	12, 16	16	5,5		32	42			14		20	20				13,5	4							
28.302	20, 25	22	6,6		40	54			17		25	25				18	5							

\* Empfehlung:  
Bei 1 Befestigungswinkel/Flansch nur bis  
Hub<sub>max</sub> = 50 mm.

\* Recommendation:  
When using one mounting bracket/flange to  
stroke<sub>max</sub> = 50 mm only.