



MAGNETICALLY-OPERATED SWITCH CONTACT BLOCK, RECT. SMALL 26X36MM, FOR DOOR HINGES ON RIGHT, CONTACT ELEMENTS: SAFETY CONTACTS 1NO+1NC, SIGNALING CONTACT 1NC, WITH 8MM CONNECTOR, 6-POLE WITH LATCHING CONNECTION, W/O LED, MATCHING SOLENOID 3SE6714-3CA OR OFFSET BY 90 DEGR. 3SE6724-3CA

Figure similar

Product designation	magnetically operated switch, switch block	
General technical data:		
Product function		No
<ul style="list-style-type: none"> • positive opening 		
Shock resistance		Sinusoidal half-wave 30g / 11 ms
<ul style="list-style-type: none"> • acc. to IEC 60068-2-27 		
Vibration resistance		10 ... 55 Hz: 1 mm
<ul style="list-style-type: none"> • acc. to IEC 60068-2-6 		
Protection class IP		IP67
Equipment marking		S
<ul style="list-style-type: none"> • acc. to DIN EN 61346-2 • acc. to DIN EN 81346-2 		S
Enclosure:		
Material of the enclosure		Plastic, glass-fiber reinforced thermoplastic
Drive Head:		
Design of the operating mechanism		magnet
Design of the switching function		NC contact and NO contact
Safety related data:		
B10 value with high demand rate acc. to SN 31920		12 500 000
Safety Integrity Level (SIL) acc. to IEC 61508		SIL3
Performance level (PL) acc. to EN ISO 13849-1		e
Proportion of dangerous failures		
<ul style="list-style-type: none"> • with low demand rate acc. to SN 31920 	%	50
<ul style="list-style-type: none"> • with high demand rate acc. to SN 31920 	%	50

T1 value for proof test interval or service life acc. to IEC 61508	y	20
--	---	----

Ambient conditions:

Ambient temperature		
• during operation	°C	-25 ... +70
• during storage and transport	°C	-25 ... +70

Inputs/ Outputs:

Number of outputs as contact-affected switching element		
• as NC contact		
— for signaling function instantaneous contact		1
— safety-related instantaneous contact		1
• as NO contact		
— safety-related instantaneous contact		1
Number of semiconductor outputs		
• for signaling function		0
• safety-related		0

Display:

Evaluation version required		yes
-----------------------------	--	-----

Installation/ mounting/ dimensions:

Mounting type		screw fixing
---------------	--	--------------

Certificates/ approvals:

General Product Approval



Further information

Information- and Downloadcenter (Catalogs, Brochures,...)

<http://www.siemens.com/industrial-controls/catalogs>

Industry Mall (Online ordering system)

<http://www.siemens.com/industrymall>

Cax online generator

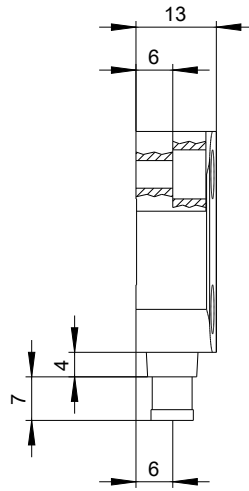
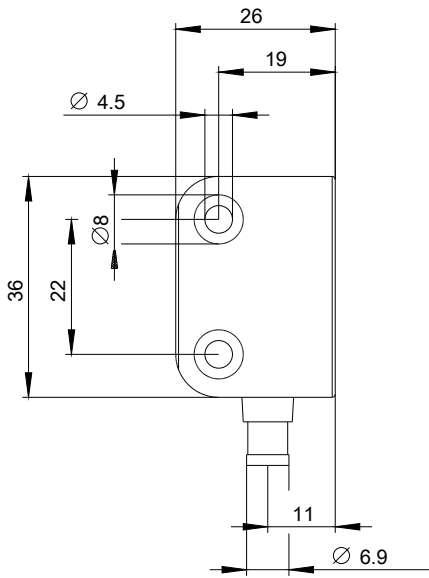
<http://support.automation.siemens.com/WW/CAXorder/default.aspx?lang=en&mlfb=3SE66263CA01>

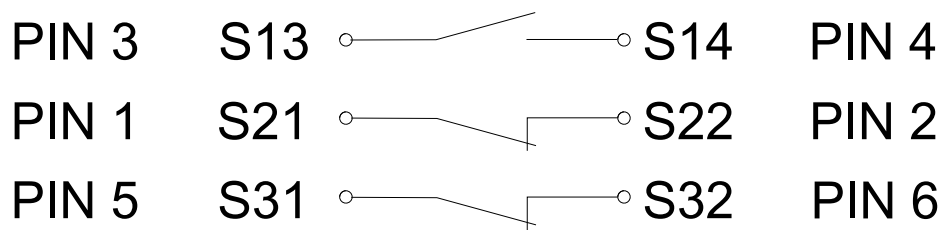
Service&Support (Manuals, Certificates, Characteristics, FAQs,...)

<http://support.automation.siemens.com/WW/view/en/3SE66263CA01/all>

Image database (product images, 2D dimension drawings, 3D models, device circuit diagrams, EPLAN macros, ...)

http://www.automation.siemens.com/bilddb/cax_de.aspx?mlfb=3SE66263CA01&lang=en





last modified:

09.03.2015