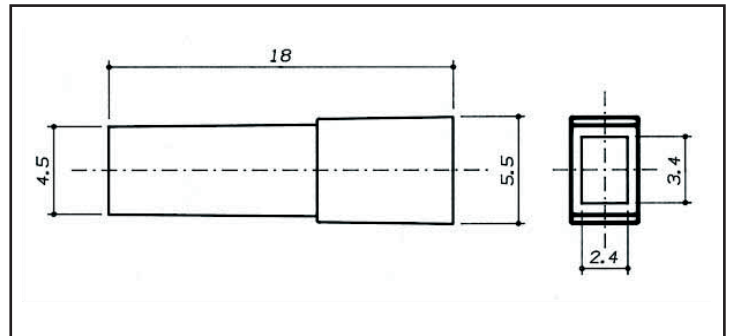


# 110 SERIES

Insulation housings for terminals

## 01 Type (Straight) Housing <Made in Europe>

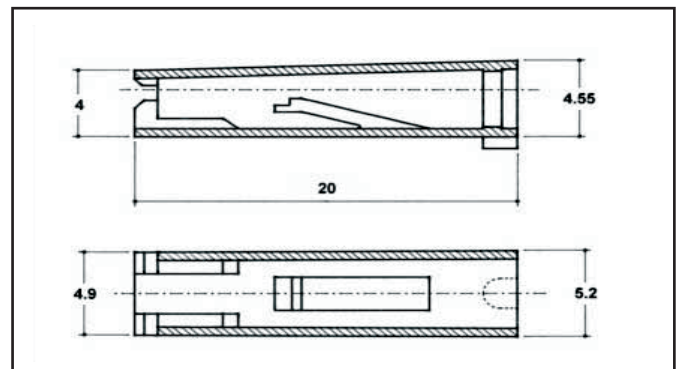


File No. E172855

Part No	Standard	Description	Material	Max Operating Temp °C	Applicable JST Terminal
CS-28F001		Single Circuit Housing	PE (UL94-HB)	50	STO-(*)-(*)-110(*)-(*)-(*)-(*)
CS-28N001			Nylon 66 (UL94-V2)	130	
CS-28N001V0			Nylon 68 (UL94-V0)	140	

- Note:
- 1) Colour coding: 0=Natural, 1=White, 3=Red, 5=Black. Example CS-28N501 = Black Housing.
  - 2) Example applicable JST Terminal; STO-1.0T-110N-8
  - 3) Parts are available in different materials: Contact JST.
  - 4) For availability, delivery and minimum order quantity details, contact JST.

## 02 Type (Straight) Housing <Made in Europe>



File No. E172855

Part No	Standard	Description	Material	Max Operating Temp °C	Applicable JST Terminal
01019 (CS-28N002)		Single Circuit Housing	Nylon 66 (UL94-V2)	130	STO-(*)-(*)-110(*)-(*)-(*)-(*)
CS-28N002V0			Nylon 68 (UL94-V0)	140	

- Note:
- 1) Colour coding: 0=Natural, 2=Yellow, 3=Red, 4=Green, 5=Black, 6=Blue. Example CS-28N502 = Black Housing.
  - 2) Example applicable JST Terminal; STO-1.0T-110N-8
  - 3) Parts are available in different materials: Contact JST.
  - 4) For availability, delivery and minimum order quantity details, contact JST.