

**DRAPER**<sup>®</sup>

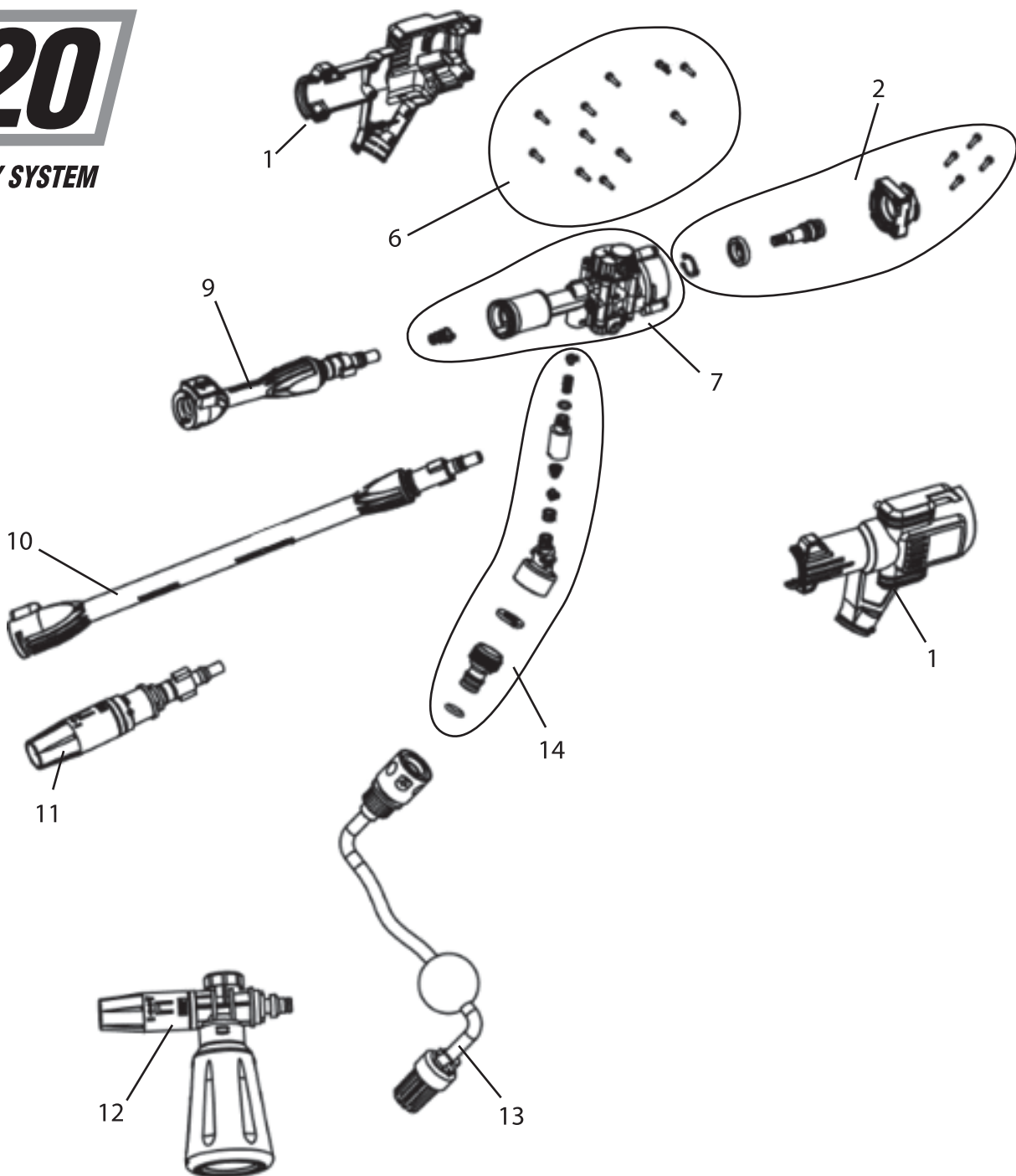
20V

# PRESSURE WASHER

GB

97533 - D20PW16BARKIT SPARE PARTS DRAWING  
1 OF 2

**D20**  
MULTI-TOOL BATTERY SYSTEM



KEY No.	PART No.	STOCK No.	DESCRIPTION
1	YD20PW16BAR-1	96069	Shell
2	YD20PW16BAR-2	96070	Centre gear assembly
6	YD20PW16BAR-6	96071	Screw (set)
7	YD20PW16BAR-7	96072	Pump assembly
9	AD20PW16BAR-9	96073	Short lance

KEY No.	PART No.	STOCK No.	DESCRIPTION
10	AD20PW16BAR-10	96074	Extension lance
11	AD20PW16BAR-11	96147	Spray nozzle
12	AD20PW16BAR-12	96149	Soap bottle
13	AD20PW16BAR-13	96432	Water pipe
14	YD20PW16BAR-14	96482	Connector set

Helpline: +44 (0) 23 8049 4344 Sales Desk: +44 (0) 23 8049 4333 General Enquiries: +44 (0) 23 8026 6355 internet: drapertools.com email: sales@drapertools.com

**DRAPER**<sup>®</sup>

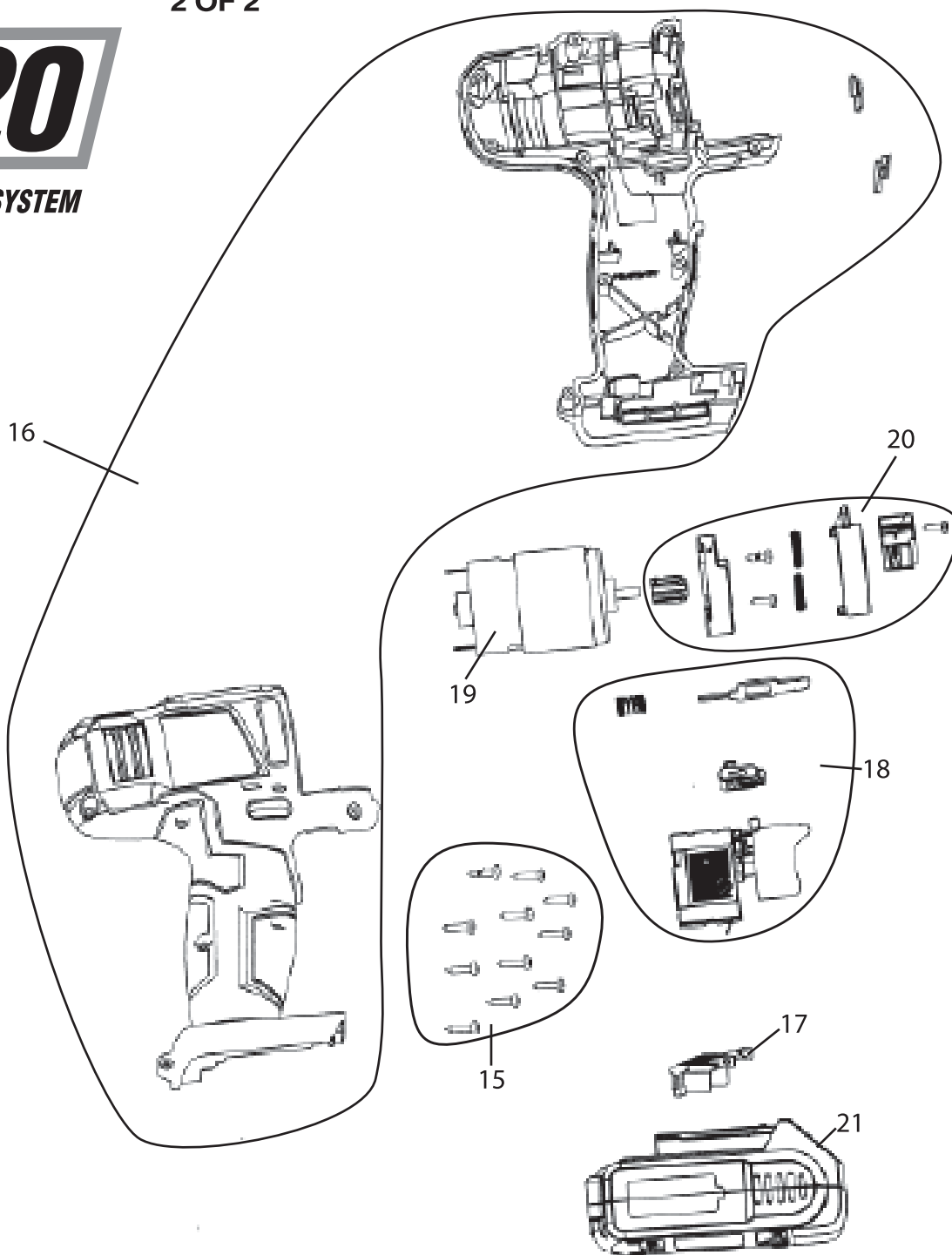
20V

# PRESSURE WASHER

GB

97533 - D20PW16BARKIT SPARE PARTS DRAWING  
2 OF 2

**D20**  
MULTI-TOOL BATTERY SYSTEM



KEY No.	PART No.	STOCK No.	DESCRIPTION
15	YD20PW16BAR-15	98801	Screw (set)
16	YD20PW16BAR-16	98802	Shell assembly
17	YD20PW16BAR-17	97167	Inset assembly

KEY No.	PART No.	STOCK No.	DESCRIPTION
18	YD20PW16BAR-18	97169	Trigger assembly
19	YD20PW16BAR-19	97170	Motor
20	YD20PW16BAR-20	97171	Gear assembly

Helpline: +44 (0) 23 8049 4344 Sales Desk: +44 (0) 23 8049 4333 General Enquiries: +44 (0) 23 8026 6355 internet: drapertools.com email: sales@drapertools.com