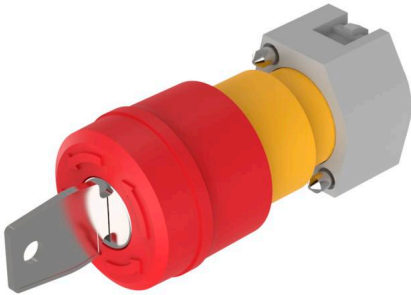


EAO – Your Expert Partner for Human Machine Interfaces

704.066.2A - Emergency stop switch - Actuator

704.066.2A - Emergency stop switch - Actuator



Attention: The preview is based on a sample product. This can differ from your current configuration.

Attribute

| | |
|---------------------|-------------------------|
| Design | raised |
| Front dimension | Ø 37 mm |
| Front form | round |
| IP front protection | IP65 |
| Mounting cut-out | Ø 22.3 mm |
| Housing colour | Yellow |
| Housing material | Plastic |
| Lens colour | Red |
| Lens illumination | non illuminative |
| Lens material | Plastic |
| Lens optics | opaque |
| Lens shape | mushroom-head |
| Marking | Arrows |
| Operating Travel | Approx. 5.8 mm ± 0.2 mm |
| Switching action | Maintained |
| Weight | 0.3 kg |

Schaltelement

| | |
|-----------------------------------|---|
| max. number of switching elements | 2 |
|-----------------------------------|---|

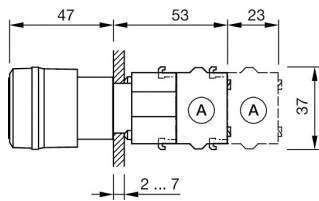
Function

Emergency stop switch

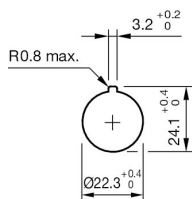
EAO – Your Expert Partner for Human Machine Interfaces

704.066.2A - Emergency stop switch - Actuator

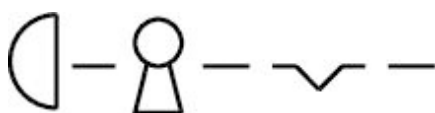
Dimensions



Mounting cut-outs



Wiring diagrams



Additional information

Max. 2 switching elements can be clipped on

Shaft yellow

Shaft yellow

Twist to unlock clockwise