

## M8-Receptacle Connectors In Accordance With IEC 61076-2-104

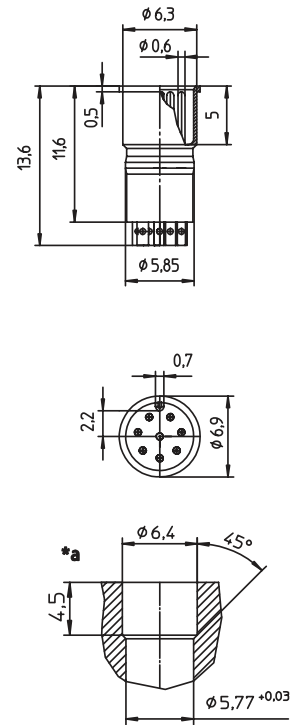
RSEM



### Male, 8-Pole

Receptacle connector, M8 male connector for sensors, with long solder contacts, solid contacts on solder side.

RSEM



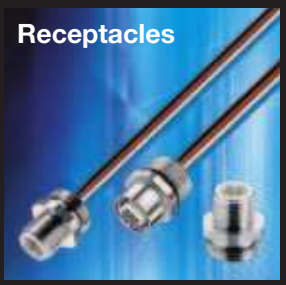
\*a cut out

### Pin Assignments

Face Views

M8 - 8 poles





Be Certain with Belden

**M8-Receptacle Connectors In Accordance With IEC 61076-2-104**  
RSEM

**Technical Data**

**Environmental**

Degree of protection IP 67 / NEMA 6P  
 Operating temperature range -25°C (-13°F) / +80°C (+176°F)

**Mechanical**

Insert PA  
 Contact CuZn, pre-nickel and 0.8 microns gold-plated  
 Mode of connection solder connection

**Electrical**

Nominal current at 40°C 1 A  
 Nominal voltage 32 V  
 Test voltage 0.8 kV eff. / 60 s  
 Insulation resistance > 10<sup>9</sup> Ω  
 Pollution degree 3

Receptacles

Part Number	Pins	Contact (soldering side)	Characteristics
RSEM 8	8	solid contact	

