



Datenblatt - Fiche technique - Data sheet

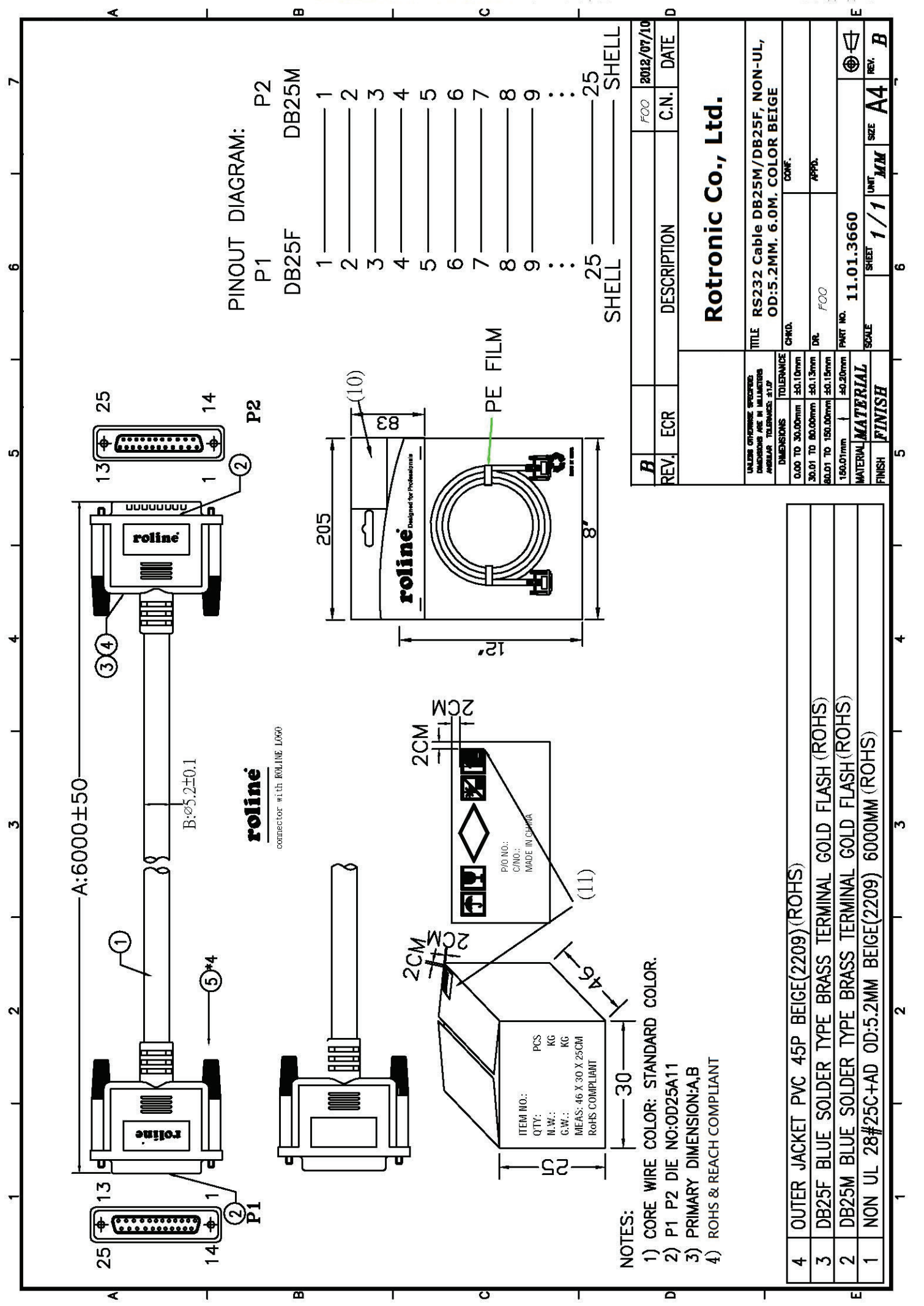
**11.01.3660**



ROLINE RS232 Kabel ST-BU, 6,0m

ROLINE Câble RS-232 M/F, 6,0m

ROLINE RS232 Cable, M - F, 6 m



PINOUT DIAGRAM:  
 P1 DB25F DB25M  
 P2 DB25M

- 1 \_\_\_\_\_
- 2 \_\_\_\_\_
- 3 \_\_\_\_\_
- 4 \_\_\_\_\_
- 5 \_\_\_\_\_
- 6 \_\_\_\_\_
- 7 \_\_\_\_\_
- 8 \_\_\_\_\_
- 9 \_\_\_\_\_
- ∴ \_\_\_\_\_
- 25 \_\_\_\_\_
- SHELL \_\_\_\_\_
- \_\_\_\_\_ SHELL

REV.	ECR	DESCRIPTION	FOO	2012/07/10
B			C.N.	DATE
<b>Rotronic Co., Ltd.</b>				
UNLESS OTHERWISE SPECIFIED DIMENSIONS ARE IN MILLIMETERS ANGULAR TOLERANCE: 3:1:7		TITLE	RS232 Cable DB25M/DB25F, NON-UL, OD:5.2MM. 6.0M. COLOR BEIGE	
DIMENSIONS TOLERANCE		CHKD.	CONF.	
0.00 TO 30.00mm ±0.10mm		DR.	FOO	
30.01 TO 80.00mm ±0.15mm		PART NO.	11.01.3660	
80.01 TO 150.00mm ±0.15mm		SCALE	1/1	
150.01mm ±0.20mm		MATERIAL	A4	
FINISH		FINISH	REV. B	

NOTES:

- CORE WIRE COLOR: STANDARD COLOR.
- P1 P2 DIE NO:OD25A11
- PRIMARY DIMENSION:A,B
- ROHS & REACH COMPLIANT

4	OUTER JACKET PVC 45P BEIGE(2209)(ROHS)
3	DB25F BLUE SOLDER TYPE BRASS TERMINAL GOLD FLASH (ROHS)
2	DB25M BLUE SOLDER TYPE BRASS TERMINAL GOLD FLASH (ROHS)
1	NON UL 28#25C+AD OD:5.2MM BEIGE(2209) 6000MM (ROHS)