

A close-up, artistic photograph of brass instrument valves and pistons. The image shows several polished brass valves with clear, faceted glass pistons. The lighting is bright, creating strong highlights and reflections on the metallic surfaces. The composition is a shallow depth of field, with some valves in sharp focus and others blurred in the background.

# PERFORMANCE

CORNETS – TENOR HORNS – BARITONES – EUPHONIUMS – TUBAS

The Besson logo, featuring a stylized, intertwined 'B' and 'E' monogram.

**BESSON**



# VALUES & TRADITIONS

## THE BESSON REFERENCE

---

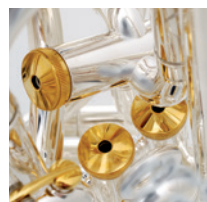
Working with the best craftsmen, the latest technology and the most highly regarded musicians, Besson always strives to do better, just as you do when you practice.

Never content with relying on tradition, great though it is, our desire is to put a brass instrument in your hands that allows you to play just the way you want.

Our unique brass sound is the one that band players strive for, its personality resonating through band rooms and concert halls around the world, straight to the audience's grateful ears.

In recent years the quality of Besson brass instruments has continued to rise with rigorous testing and quality control. From the raw materials, the skilled techniques of master craftsmen, to the build and finish, each instrument is played and tested by the greatest brass players you will ever hear.

We do this to provide you with the best instruments money can buy, a quality that endures and retains its value, making it a 'sound' investment to help you on your journey as a musician.



#### **04 PRESTIGE, ART OF EXCELLENCE**

- 06 - Cornet 2028
- 07 - Tenor horn 2050
- 08 - Baritone Prestige 2056
- 09 - Euphoniums 2051 & 2052

#### **10 SOVEREIGN, ART OF SOUND**

- 12 - Cornet 924
- 13 - Cornet 928
- 14 - Tenor horn 950
- 15 - Baritone 955
- 16 - Euphoniums 967, 9678
- 18 - Tubas 980, 981, 982 & 994
- 20 - Tubas 983, 984 & 995

#### **22 TECHNICAL SPECIFICATIONS: PRESTIGE & SOVEREIGN**

#### **24 INTERNATIONAL, ART OF INFLUENCE**

- 26 - Euphonium 767
- 27 - Tubas 782 & 794

#### **28 NEW STANDARD, ART OF LEGACY**

- 30 - Cornet 120
- 31 - Trumpets 110 & 111
- 32 - Tenor Horn 152
- 33 - Baritone 157
- 34 - Trombone 130
- 35 - Euphoniums 162, 163, 164 & 165
- 36 - Tubas 177 & 187

#### **38 TECHNICAL SPECIFICATIONS: NEW STANDARD**

#### **40 ACCESSORIES**

#### **42 IMPORTANT MOMENTS IN OUR HISTORY**







# PRESTIGE

## ART OF EXCELLENCE



### THE BESSON PRESTIGE RANGE

---

From the leading star soloists to the enthusiastic player in the village band, Besson instruments have for generations been 'the' brass instruments to own, with a distinctive and famous sound, often imitated but never bettered. A cornet, a tenor horn, a baritone or a euphonium of the Prestige range give you a choice of sound and colour, but always with a quality of build and finish that will make you proud to hold it, giving you confidence to play your best. Never in Besson's proud history have the instruments been more reliable than today, benefitting from technological advances that have enabled us to create for you what many consider to be the ultimate brass band instruments. The Prestige range gives you the freedom to play as you want.



# PRESTIGE

## Bb CORNET 2028



### Bb CORNET BE2028

The Prestige 2028 cornet with its fine array of impressive tone colours and centred tone, complete with a main tuning slide trigger and dashing good looks is a stunningly good instrument.

Designed and continually refined by today's leading players, the Prestige cornet provides endless possibilities.

It is a more focused and intense sound than the popular Sovereign cornet and responds to your wishes, however demanding they are.

It retains many of the playing characteristics of the old 921 and International Cornet so beloved by top players in the 70s and 80s, but is also able to handle the demands of any of today's modern repertoire.

As with all modern Besson instruments, the sensational valve action means no music will ever be too fast!

### TECHNICAL SPECIFICATIONS

- Key: Bb
- Bore: .468" ( 11,89 mm )
- Hand-made bell in yellow brass
- Bell diameter: 4.88" ( 124 mm )
- Weight: 2lb 11oz ( 1 225 g )
- 3 monel valves with a top sprung action
- 2 waterkeys
- Main tuning slide and 3rd valve slide triggers
- Gold-plated finger buttons, caps and waterkeys
- Optional heavyweight finger buttons and bottom caps
- Lyre holder
- Finishes: clear lacquer or bright silverplate

### REFERENCES

**BE2028-1G:** Lacquer

**BE2028-2G:** Silverplate



# PRESTIGE

## TENOR HORN 2050



### TENOR HORN BE2050

The Prestige 2050 tenor horn is still the market leader in tenor horn design. The addition of the main tuning slide trigger is just one of the superb new developments that makes this horn such a winner.

Recent modifications to the lead pipe and the ergonomics of the trigger position have ensured the Prestige will satisfy all its devotees.

Its luxuriant, opulent tone helps blend both sides of the brass band together. This horn has an array of tonal possibilities, from the softest whispering pianissimo, through broad mezzo dynamics to the strongest fortissimos, never sacrificing tonal beauty and elegance.

The finish to the Prestige horn with its elegant gold trimmings set against bright silver plating is an added feature, meaning it looks as good as it sounds.

### TECHNICAL SPECIFICATIONS

- Key: Eb
- Bore: .466" ( 11,84 mm )
- Hand-made bell in yellow brass
- Bell diameter: 8" ( 203 mm )
- Weight: 4lb 10oz ( 2 100 g )
- 3 monel valves with a top sprung action
- 3 waterkeys
- Main tuning slide trigger : left hand middle finger action
- Gold-plated finger buttons, caps and waterkeys
- Optional heavyweight finger buttons and bottom caps
- Lyre holder
- Finishes: clear lacquer  
or bright silverplate

### REFERENCES

**BE2050-1G:** Lacquer

**BE2050-2G:** Silverplate



# PRESTIGE

## BARITONE 2056



### BARITONE BE2056

The Prestige 2056 baritone is a four-valve compensating baritone, facilitating exactly the same full chromatic range as the euphonium of up to five octaves, should you ever need it!

Much of the modern writing for the baritone uses the lower notes, dipping below the normal lowest note of F sharp, especially for solo players and those who enjoy the challenge of playing solos for the euphonium or saxhorn.

The presence of the 4th valve also enables a wide range of alternate fingers to be used that facilitate the performance of countless difficult phrases.

The slightly heavier weight of the Prestige compared to the Sovereign also gives this instrument a different tonal characteristic, perhaps more concentrated yet still alive and vibrant, and in the hands of the world's greatest baritone soloists and band players we hear all these possibilities gloriously demonstrated.

### TECHNICAL SPECIFICATIONS

- Key: Bb
- Bore: .543" ( 13,80mm )
- Hand-made bell in yellow brass
- Bell diameter: 9¼" ( 241mm )
- Weight: 5lb 15oz ( 2 800g )
- 4 compensating valves ( 3+1 )
- 2 waterkeys
- Gold-plated finger buttons, caps and waterkeys
- Optional heavyweight finger buttons and bottom caps
- Finishes: clear lacquer or bright silverplate

### REFERENCES

**BE2056-1G:** Lacquer

**BE2056-2G:** Silverplate



# PRESTIGE EUPHONIUMS 2051 & 2052



## EUPHONIUMS BE2051 / BE2052

The Prestige 2051 and 2052 euphoniums sport the main tuning slide trigger and unique lead pipe design and are the instruments of choice for many of the world's professional soloists and band players alike.

With the creation of the Prestige models, the combination of the redesigned valve group assembly, the new lead pipe, and the adjustable main slide tuning trigger means that the tuning is now totally controllable, giving the musician everything they need to play with perfect intonation in any circumstance, be it with piano, brass or wind band, or an orchestra.

The sheer number of tonal possibilities is immense with you the performer always in control.

The 2051 with its slightly smaller bell produces a beautiful sound that takes a little less air to fill, and its compact sound has won it many devotees.

The bell size is the only difference between the 2051 and 2052 but at Besson we like to offer the performer choice, so you can find the Prestige euphonium that is just perfect for you.

The powerful pedal tones and centred yet clear high tones mark the extremes of this remarkable instrument's capabilities, yet it is the range of expressive tone in the medium register which is perhaps its most endearing characteristic.

## TECHNICAL SPECIFICATIONS

- Key: Bb
- Bore: .590" ( 14,98mm )
- Hand-made bell in yellow brass
- 2051 Bell diameter: 11" ( 279mm )
- 2052 Bell diameter: 12" ( 304mm )
- 2051 Weight: 10lb 4oz ( 4 650g )
- 2052 Weight: 10lb 8oz ( 4 700g )
- 4 compensating valves ( 3+1 )
- 3 waterkeys
- Removable music lyre
- Removable valve block gutter
- Main tuning slide trigger:  
left hand thumb action
- Gold-plated finger buttons, caps,  
trigger and waterkeys
- Optional heavyweight finger button  
and bottom caps
- Finishes: clear lacquer or bright  
silverplate

## REFERENCES

**BE2051-1G:** Small bell, lacquer  
**BE2051-2G:** Small bell, Silverplate  
**BE2052-1G:** Large bell, lacquer  
**BE2052-2G:** Large bell, Silverplate





# SOVEREIGN

## ART OF SOUND



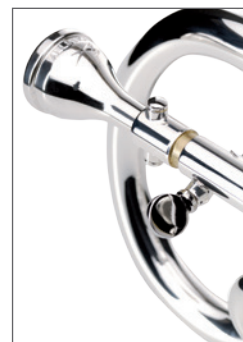
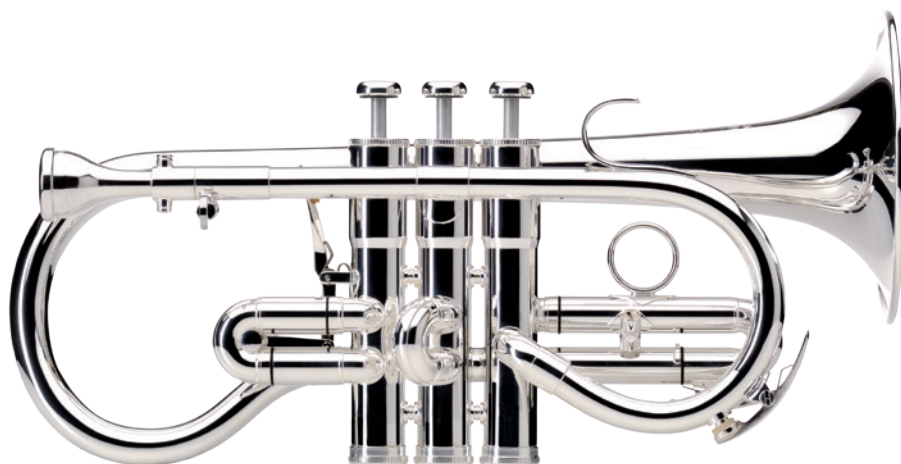
### THE BESSON SOVEREIGN RANGE

---

The legendary reputation of the Besson Sovereign instruments has been established over many years by generations of our top bandsmen. Warm, rich and vibrant sounds, good intonation and easy-blowing flexibility define these instruments, whose sound quality is the very essence of the brass band, the most widely used in the brass band world. This superb range of instruments satisfies the most critical standards and is widely acclaimed for excellence of construction, tunefulness and finish as well as brilliant innovative design. The discerning player has two choices to make for the professional instrument, either the Prestige or the Sovereign. Both have their devotees, with solo players and cornet sections of the world's finest brass bands each with their own preferences.



# E♭ SOPRANO CORNET 924



Adjustable leadpipe



Valveblock

## EB SOPRANO CORNET BE924

The new Sovereign 924R Eb soprano cornet is an absolute winner, surely one of the best 'new' cornets to emerge in its generation.

After painstaking research and development, the new soprano cornet was unveiled at the 2011 British Open Brass Band Championships in Birmingham. It was the talking point of the event, with its beautiful tone allowing for high singing melodic lines and its ability to respond to players' needs to ride on top of the band.

The excellent tuning is a revelation for generations of players who have struggled to find the right pitch. The new soprano has become the thoroughbred in the Besson stable, an outstanding performer.

## TECHNICAL SPECIFICATIONS

- Key: Eb
- Bore: .460" ( 11,68 mm )
- Hand-made bell in rose brass
- Bell diameter: 4.65" ( 118 mm )
- Weight: 2lb 2oz ( 950 g )
- 3 monel valves with a top sprung action
- 2 waterkeys
- 1st valve slide trigger
- Finger ring on the 3rd valve slide
- Finishes:  
clear lacquer or bright silverplate

## REFERENCES

**BE924G-1:** Lacquer  
**BE924G-2:** Silverplate

# SOVEREIGN

## Bb CORNET 928



### Bb CORNET BE928

The Sovereign 928 cornet has been described as the established benchmark against which all top line cornets are measured.

Both amateur and professional players adore this instrument with its rich open sound, giving every cornet section a singing vibrant sound that makes bands so exciting to listen to.

Superior build quality in the last years has seen the status of this classic cornet raised higher and higher.

Many of the UK's leading brass bands choose and trust the Besson Sovereign cornet.

### TECHNICAL SPECIFICATIONS

- Key: Bb
- Bore: .466" ( 11,84 mm )
- Hand-made bell in rose brass
- Bell diameter: 4.88" ( 124 mm )
- Weight: 2lb 7oz ( 1 100 g )
- 3 monel valves with a top sprung action
- 2 waterkeys
- 1st and 3rd valve slide triggers
- Trigger on main tuning slide in option
- Finishes: clear lacquer  
or bright silverplate

### REFERENCES

**BE928G-1:** Lacquer

**BE928G-2:** Silverplate

**BE928GT-1:** with trigger, lacquer

**BE928GT-2:** with trigger, silverplate





# TENOR HORN 950



## TENOR HORN BE950

The ever-popular Sovereign 950 tenor horn is the classic model that has made it the most impressive horn design for generations.

It has been the mainstay of horn manufacturing for decades with its characteristic tubing configuration that gives you both tone and response in equal measure.

This model too has evolved as a result of the collaboration of highly skilled specialists, both technical and musical, all contributing their know-how and artistry.

The choice of the Prestige or Sovereign horns is a choice the musician must make based on what tonal colours they prefer and how the air flows through the instrument.

What is guaranteed is that you are choosing an instrument constructed from the finest raw materials and assembled with scrupulous attention to detail, using cutting edge technology and extensive expertise.

## TECHNICAL SPECIFICATIONS

- Key: Eb
- Bore: .466" ( 11,84 mm )
- Hand-made bell in yellow brass
- Bell diameter: 8" ( 203 mm )
- Weight: 4lb 6oz ( 1 980 g )
- 3 monel valves with a top sprung action
- Lyre holder
- 2 waterkeys
- Finishes: clear lacquer or bright silverplate

## REFERENCES

**BE950-1:** Lacquer  
**BE950-2:** Silverplate

# SOVEREIGN

## BARITONE 955



### BARITONE BE955

The Sovereign baritone remains the most popular baritone in Besson's long history and having benefited from several small improvements in recent years, we believe this three-valve compensating instrument will remain the mainstay of the baritone sections of brass bands for years to come. Each instrument is rigorously play-tested and checked at the factory by a renowned professional soloist for sound, response and finish.

### TECHNICAL SPECIFICATIONS

- Key: Bb
- Bore: .543" ( 13,80 mm )
- Hand-made bell in yellow brass
- Bell diameter: 9½" ( 241 mm )
- Weight: 5lb 8oz ( 2 500 g )
- 3 compensating valves
- Lyre holder
- 2 waterkeys
- Finishes: clear lacquer or bright silverplate

### REFERENCES

**BE955-1:** Lacquer  
**BE955-2:** Silverplate



# SOVEREIGN EUPHONIUM



967T, 968T:  
Main tuning slide trigger



# S 967, & 968

## EUPHONIUMS BE967 / BE968 / BE967T / BE968T

The Sovereign 967 and 968 and the new 967T and 968T euphoniums with their lively response, golden tone and wonderful valve action are known and trusted by band players all over the world.

The Sovereign euphoniums are slightly lighter in weight than the Prestige models, providing a very open and free-blowing feel with an immediacy of response that appeals to many musicians.

All the Sovereign models are large bore four-valve compensating instruments, with the bell size of the 968 slightly smaller than the 967.

The new family member is the 967T which is the classic 967 model with a new addition: the famous tuning slide trigger from the Prestige euphonium, giving increased control over all aspects of the tuning and slightly darkening the tone.

This model is proving to be a very exciting and popular addition to the Besson range.

Sovereign euphoniums have a facility and versatility that make them highly sought-after euphoniums, and like all the Besson brass range, have benefited greatly from developments in valve technology since production commenced in Germany.

## TECHNICAL SPECIFICATIONS

- Key: Bb
- Bore: .590" ( 14,98 mm )
- Hand-made bell in yellow brass
- 967 medium bell, diameter: 12" ( 304 mm )
- 968 large bell, diameter: 11" ( 279 mm )
- 967 Weight: 10lb 8oz ( 4 700 g )
- 968 Weight: 10lb 4oz ( 4 650 g )
- 4 compensating valves ( 3+1 )
- 3 waterkeys
- Removable valve block gutter
- Trigger on main tuning slide in option
- Finishes: clear lacquer or bright silverplate

## REFERENCES

**BE967-1:** Lacquer

**BE967-2:** Silverplate

**BE967T-1:** With trigger, lacquer

**BE967T-2:** With trigger, silverplate

**BE968-1:** Lacquer

**BE968-2:** Silverplate

**BE968T-1:** With trigger, lacquer

**BE968T-2:** With trigger, silverplate



# E♭ TUBAS 980, 981 & 982

## TUBAS BE980 / BE981 / BE982

Devotees of the E♭ tubas have a choice between the Sovereign 980 with a smaller bell model, the 981 with the classic 19-inch bell model with the 'John Fletcher' leadpipe, and the 982 with carriage rings and a slightly smaller tapered leadpipe.

The glorious and famous tone of these instruments is the sound you can hear in the world's leading brass and wind bands, who put their trust in these tubas, noted also for their free-blowing quality and projection.

The intonation of these instruments allows the organ-like sounds of the great bands to be built on these foundations.

Many orchestral players and brass quintet tubists feel the richness of sound coupled with their dynamic range.

This makes these tubas the absolute first choice to do their job.

## TECHNICAL SPECIFICATIONS

- Key: E♭
- Bore: .681" ( 17,30 mm )
- Hand-made bell in yellow brass
- 980 Bell diameter: 17" ( 431 mm )
- 981 & 982 Bell diameters: 19" ( 483 mm )
- Weight: 20lb 8oz ( 9 300 g )
- 4 compensating valves ( 3+1 )
- 4 waterkeys
- Finishes: clear lacquer or bright silverplate
- 981 option: straight leadpipe

## REFERENCES

**BE980-1:** Lacquer  
**BE980-2:** Silverplate  
**BE981-1:** Lacquer  
**BE981-2:** Silverplate  
**BE981S-1:** Lacquer, straight leadpipe  
**BE982-1:** Lacquer  
**BE982-2:** Silverplate



Straight leadpipe

# SOVEREIGN

## BBb TUBA 994



### BBb TUBA BE994

For BBb players the mighty 994 Tuba provides a tremendously sonorous bass voice to any large ensemble, yet is lighter than older models. Built to the highest standards of technical proficiency and finish, there is no other tuba of its kind that comes close to matching the performance of this BBb. It is the ultimate instrument for the ultimate tuba section.

### TECHNICAL SPECIFICATIONS

- Key: BBb
- Bore: .730" ( 18,54 mm )
- Hand-made bell in yellow brass
- Bell diameter: 19" ( 483 mm )
- Weight: 26lb ( 11 800 g )
- 4 compensating valves ( 3+1 )
- 4 waterkeys
- Finishes: clear lacquer or bright silverplate

### REFERENCES

**BE994-1:** Lacquer  
**BE994-2:** Silverplate





# E♭ TUBAS 983 & 984



## TUBAS BE983 / BE984

The front action 983 is the preferred tuba for many soloists and chamber musicians, and is especially popular in the USA.

It has a lightness of touch and a singing quality by design, granting the soloist and chamber musician complete freedom of expression.

The new 984 model is also a four valve front action compensated tuba.

Its playing position is the same as the orchestral tuba and enables the musician to play together with the trombone players in one section.

After years of research and development, the new 984 model is the first to combine the historic warm and deep sound of the E♭ tuba with the centred and focused precision of the F tuba.

To achieve this, the 984 tuba is designed with a new receiver, a new leadpipe, a smaller and lighter bell, a new valve block position, new stays and more. This tuba is the first in its series to have a trigger on the 1st valve.

The 984 model is a completely new model which Besson is proud to add to its Sovereign range.

## TECHNICAL SPECIFICATIONS

- Key: E♭
- Bore: .681" ( 17,30 mm )
- Hand-made bell in yellow brass
- 983 Bell diameter: 17" ( 431 mm )
- 984 Bell diameter: 15" ( 381 mm )
- Weight: 18lb ( 8 200 g )
- 4 compensating valves – Front action
- 4 waterkeys
- 1st valve slide trigger (984 model only)
- Finishes: clear lacquer or bright silverplate

## REFERENCES

**BE983-1:** Lacquer  
**BE983-2:** Silverplate  
**BE984-1:** Lacquer  
**BE984-2:** Silverplate

# SOVEREIGN

## CC TUBA 995



### CC TUBA BE995

The Besson Sovereign 995 CC tuba is continuing to win admirers around the world.

This five-valve front action full size CC tuba is an astonishing instrument, combining an embracing powerful sound with excellent intonation and easy handling.

Many of the leading orchestral tuba players in the world adore this instrument, finding it negotiates even the hardest orchestral excerpts with ease. It is ergonomically comfortable for the performer, sitting well without causing discomfort with everything in the 'right' position.

### TECHNICAL SPECIFICATIONS

- Key: CC
- Bore: .748" ( 19 mm )
- Hand-made bell in yellow brass
- Bell diameter: 19" ( 483 mm )
- Weight: 23lb ( 10 500 g )
- 5 compensating valves – Frontal action
- 4 piston valves + 1 rotary valve
- 4 waterkeys
- Finishes: clear lacquer or bright silverplate

### REFERENCES

**BE995-1:** Lacquer  
**BE995-2:** Silverplate



# TECHNICAL SPECIFICATIONS: PRESTIGE & SOVEREIGN

	KEY	BORE	BELL DIAMETER	BELL METAL
<b>PRESTIGE CORNETS</b> BE2028-1G BE2028-2G	Bb	.468" 11,89 mm	4.88" 124 mm	Yellow brass
<b>SOVEREIGN CORNETS</b> BE924G-1 BE924G-2	Eb	.460" 11,68 mm	4.65" 118 mm	Rose brass
BE928G-1 BE928G-2 BE928GT-1 BE928GT-2	Bb	.466" 11,84 mm	4.88" 124 mm	Rose brass
<b>PRESTIGE TENOR HORNS</b> BE2050-1G BE2050-2G	Eb	.466" 11,84 mm	8" 203 mm	Yellow brass
<b>SOVEREIGN TENOR HORNS</b> BE950-1 BE950-2	Eb	.466" 11,84 mm	8" 203 mm	Yellow brass
<b>PRESTIGE BARITONES</b> BE2056-1G BE2056-2G	Bb	.543" 13,80 mm	9½" 241 mm	Yellow brass
<b>SOVEREIGN BARITONES</b> BE955-1 BE955-2	Bb	.543" 13,80 mm	9½" 241 mm	Yellow brass
<b>PRESTIGE EUPHONIUMS</b> BE2051-1G BE2051-2G	Bb	.590" 14,98 mm	11" 279 mm	Yellow brass
BE2052-1G BE2052-2G	Bb	.590" 14,98 mm	12" 304 mm	Yellow brass
<b>SOVEREIGN EUPHONIUMS</b> BE968-1 BE968-2	Bb	.590" 14,98 mm	11" 279 mm	Yellow brass
BE968T-1 BE968T-2	Bb	.590" 14,98 mm	11" 279 mm	Yellow brass
BE967-1 BE967-2	Bb	.590" 14,98 mm	12" 304 mm	Yellow brass
BE967T-1 BE967T-2	Bb	.590" 14,98 mm	12" 304 mm	Yellow brass
<b>SOVEREIGN TUBAS</b> BE980-1 BE980-2	Bb	.681" 17,30 mm	17" 431 mm	Yellow brass
BE981-1 BE981-2 BE981S-1-0	Eb	.681" 17,30 mm	19" 483 mm	Yellow brass
BE982-1 BE982-2	Eb	.681" 17,30 mm	19" 483 mm	Yellow brass
BE983-1 BE983-2	Eb	.681" 17,30 mm	17" 431 mm	Yellow brass
BE984-1 BE984-2	Eb	.681" 17,30 mm	15" 381 mm	Yellow brass
BE994-1 BE994-2	BBb	.730" 18,54 mm	19" 483 mm	Yellow brass
BE995-1 BE995-2	CC	.748" 19 mm	19" 483 mm	Yellow brass



WEIGHT	VALVES	TRIGGERS	WATER KEYS	FINISHES
2lb 11oz 1 225 g	3 valves with top sprung action	Main tuning slide and 3rd valve slide triggers	2	Clear lacquer or bright silverplate
2lb 2oz 950 g	3 valves with top sprung action	1st valve slide trigger + finger ring on 3rd slide	2	Clear lacquer or bright silverplate
2lb 7oz 1 100 g	3 valves with top sprung action	1st and 3rd valve slide triggers	2	Clear lacquer or bright silverplate
4lb 10oz 2 100 g	3 valves with top sprung action	Main tuning slide trigger	3	Clear lacquer or bright silverplate
4lb 6oz 1 980 g	3 valves with top sprung action	/	3	Clear lacquer or bright silverplate
5lb 15oz 2 800 g	4 valves ( 3+1 ) Compensating system	/	3	Clear lacquer or bright silverplate
5lb 8oz 2 500 g	3 valves Compensating system	/	2	Clear lacquer or bright silverplate
10lb 4oz 4 650 g	4 valves ( 3+1 ) Compensating system	Main tuning slide trigger	3	Clear lacquer or bright silverplate
10lb 6oz 4 700 g	4 valves ( 3+1 ) Compensating system	Main tuning slide trigger	3	Clear lacquer or bright silverplate
9lb 4oz 4 200 g	4 valves ( 3+1 ) Compensating system	/	3	Clear lacquer or bright silverplate
9lb 8oz 4 300 g	4 valves ( 3+1 ) Compensating system	Main tuning slide trigger	3	Clear lacquer or bright silverplate
9lb 6oz 4 250 g	4 valves ( 3+1 ) Compensating system	/	3	Clear lacquer or bright silverplate
9lb 10oz 4 350 g	4 valves ( 3+1 ) Compensating system	Main tuning slide trigger	3	Clear lacquer or bright silverplate
20lb 8oz 9 300 g	4 valves ( 3+1 ) Compensating system	/	4	Clear lacquer or bright silverplate
20lb 8oz 9 300 g	4 valves ( 3+1 ) Compensating system	/	4	Clear lacquer or bright silverplate
20lb 8oz 9 300 g	4 valves ( 3+1 ) Compensating system	/	4	Clear lacquer or bright silverplate
20lb 8oz 9 300 g	4 valves / front action Compensating system	/	4	Clear lacquer or bright silverplate
18lb 8 200 g	4 valves / front action Compensating system	1st valve slide trigger	4	Clear lacquer or bright silverplate
26lb 11 800 g	4 valves ( 3+1 ) Compensating system	/	4	Clear lacquer or bright silverplate
23lb 10 500 g	4 valves / front action + 1 rotary valve	/	4	Clear lacquer or bright silverplate



BESSON

INTERNATIONAL

# INTERNATIONAL

## ART OF INFLUENCE



### INTERNATIONAL

---

The new range guarantee instruments built to the highest standards of technical proficiency and finish.





# EUPHONIUM 767



## EUPHONIUM BE767

The 767 is slightly lighter in weight than the others models, providing a very open and free-blowing feel with an immediacy of response that appeals to many musicians.

This model is a large bore four-valve compensating instrument. The 767 euphonium has a facility and versatility that makes him highly sought-after euphoniums, and like all the Besson brass range, he benefits greatly from developments in valve technology.

## TECHNICAL SPECIFICATIONS

- Key: Bb
- Bore: .590" ( 14,98 mm )
- Hand-made bell in yellow brass
- Bell diameter: 12" ( 304 mm )
- Weight: 10lb 8oz ( 4 700 g )
- 4 compensating valves ( 3+1 )
- Removable valve block gutter
- 3 waterkeys
- Finishes: clear lacquer or bright silverplate

## REFERENCES

**BE767-1:** Lacquer  
**BE767-2:** Silverplate

# EB TUBA 782 & BBb TUBA 794



## **Eb TUBA BE782**

The 782 offers to the musician a carriage rings and a slightly smaller tapered leadpipe. It creates a large, warm sound that Brass Bands and Wind Orchestras are looking for.

Many players will feel the richness of sound couple with the dynamic range, that makes this tuba the right choice.

## **TECHNICAL SPECIFICATIONS**

- Key: Eb
- Bore: .681" ( 17,30 mm )
- Hand-made bell in yellow brass
- Bell diameter: 19" ( 483 mm )
- Weight: 20lb 8oz ( 9 300 g )
- 4 compensating valves ( 3+1 )
- 4 waterkeys
- Finishes: clear lacquer or bright silverplate



## **BBb TUBA BE794**

For BBb players the 794 Tuba provides a sonorous bass voice to any large ensemble, yet is lighter than Sovereign models.

Built to the highest standards of technical proficiency and finish, this BBb tuba fits perfectly into the famous Besson tuba range.

## **TECHNICAL SPECIFICATIONS**

- Key: BBb
- Bore: .730" ( 18,54 mm )
- Hand-made bell in yellow brass
- Bell diameter: 19" ( 483 mm )
- Weight: 26lb ( 11 800 g )
- 4 compensating valves ( 3+1 )
- 4 waterkeys
- Finishes: clear lacquer  
or bright silverplate

## **REFERENCES**

**BE782-1:** Lacquer  
**BE782-2:** Silverplate  
**BE794-1:** Lacquer  
**BE794-2:** Silverplate





# NEW STANDARD

## ART OF LEGACY



### NEW STANDARD

The established design has provided years of service and untold pleasure to players in brass band and military band worlds that demand instruments which are not only durable and hardwearing but also responsive and easy to play. Budget-priced, the instruments share with the most expensive models the same robust construction. An excellent investment indeed, their cost will repay itself many times over through the continuing pleasure the instrument provides.



# NEW STANDARD

## Bb CORNET 120

### Bb CORNET BE120

---

Playing comfort, easy response and good intonation are just some of the benefits gained from the features of the BE120 cornet.

The resulting full, rich sound benefits the further advancement of the developing player.



### TECHNICAL SPECIFICATIONS

---

- Key: Bb
- Bore: .460" ( 11,68 mm )
- Hand-made bell in yellow brass
- Bell diameter: 4.76" ( 121 mm )
- 3 valves with a top sprung action
- 2 waterkeys
- Finishes: clear lacquer or bright silverplate

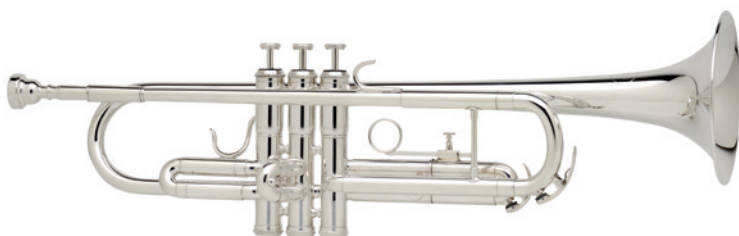
### REFERENCES

**BE120-1:** Lacquer

**BE120-2:** Silverplate

# NEW STANDARD

## TRUMPETS 110 & 111



### TRUMPET BE110

---

This student trumpet has been specially designed for entry level trumpet players.

The leadpipe is designed to make this model easy to blow, but gives a nice brilliant trumpet sound as well. Special attention was given to ensure perfect tuning.

The space around the valve block is slightly smaller than on average trumpets to give better handgrip for small hands.



### TRUMPET BE111

---

This trumpet is a "step-up" model. It has been designed to give a nice powerful bright sound.

The reversed lead pipe makes the instrument easy to blow, while providing excellent sound projection and tuning.

This trumpet has a one piece bell, a little lighter than the two-piece bell, giving greater projection.

### TECHNICAL SPECIFICATIONS

---

- Key: Bb
- Bore: .460" ( 11,68 mm )
- Hand-made bell in yellow brass
- 110 model:
  - 2 pieces bell. Brass valve slides
- 111 model:
  - 1 piece bell. Nickel-Silver valve slides
- Bell diameter: 4.84" ( 123 mm )
- 3 valves with a top sprung action
- 2 waterkeys
- Finishes: clear lacquer or bright silverplate

### REFERENCES

**BE110-1:** Lacquer  
**BE110-2:** Silverplate  
**BE111-1:** Lacquer  
**BE111-2:** Silverplate

110 model:  
Adjustable finger ring





# NEW STANDARD

## TENOR HORN 152



### TENOR HORN BE152

---

Excellent intonation and a centred sound makes the BE152 tenor horn the ultimate choice for younger players in brass bands and wind orchestras.

### TECHNICAL SPECIFICATIONS

---

- Key: Eb
- Bore: .460" ( 11,68mm )
- Hand-made bell in yellow brass
- Bell diameter: 8" ( 203 mm )
- 3 valves with a top sprung action
- 3 waterkeys
- Finishes: clear lacquer or bright silverplate

### REFERENCES

**BE152-1:** Lacquer

**BE152-2:** Silverplate



# NEW STANDARD

## BARITONE 157



### BARITONE BE157

---

The BE157 baritone is renowned for its rich sound and accurate intonation. Lightweight and smaller than most other baritones, the BE157 is perfectly suited for younger players.

### TECHNICAL SPECIFICATIONS

---

- Key: Bb
- Bore: .516" ( 11,13 mm )
- Hand-made bell in yellow brass
- Bell diameter: 8" ( 203 mm )
- 3 valves
- 2 waterkeys
- Finishes: clear lacquer or bright silverplate

### REFERENCES

**BE157-1:** Lacquer  
**BE157-2:** Silverplate



# NEW STANDARD

## TROMBONE 130

### TROMBONE BE130

Designed to provide the developing musician with an immediate tonal response, the BE130 trombone is comfortable to play and easy to blow. It easily produces a full, rounded sound and benefits from an excellent, light and smooth slide action.



### TECHNICAL SPECIFICATIONS

- Key: Bb
- Bore: .500" ( 12,70 mm )
- Hand-made bell in yellow brass
- Bell diameter: 8" ( 203 mm )
- Yellow brass slide
- 1 waterkey
- Finishes: clear lacquer or bright silverplate

### REFERENCES

**BE130-1:** Lacquer  
**BE130-2:** Silverplate

# EUPHONIUMS 162, 163, 164 & 165



## EUPHONIUMS BE162 / BE163 / BE164 / BE165

With the choice between four models, the Besson New Standard euphoniums provide an excellent start to the careers of aspiring euphonium players.

All four models are free blowing with an ease of tone production combined with an even response throughout the register.

They have a rich, warm, centred tone and a reliable, fast and quiet valve action, as well as being comfortable for both embouchure and fingers.

## TECHNICAL SPECIFICATIONS

- Key: Bb
- Bore: .580" ( 14,72 mm )
- Hand-made bell in yellow brass

### Bell diameters

- 162,164 & 165 models: 11" ( 279 mm )
- 163 model: 12" ( 304 mm )

### Valves

- 162 model: 3
- 164 model: 4 top action in-line
- 163 & 165 models: 4 valves ( 3+1 )
- 163 model: goldbrass leadpipe
- 2 waterkeys
- Finishes: clear lacquer or bright silverplate

## REFERENCES

- BE162-1:** 3 valves, lacquer
- BE162-2:** 3 valves, silverplate
- BE163-1:** 4 valves, large bell, lacquer
- BE163-2:** 4 valves, large bell, silverplate
- BE164-1:** 4 in-line valves, lacquer
- BE164-2:** 4 in-line valves, silverplate
- BE165-1:** 4 valves, lacquer
- BE165-2:** 4 valves, silverplate



# NEW STANDARD TUBAS 177



## **E♭ TUBA BE177 / B♭ TUBA BE187**

---

Both the E♭ and B♭ models are free blowing with an ease of tone production and an even response.

The mouthpipe is carefully positioned to give optimal playing comfort while the valve technology produces complete accuracy and reliability.

A lightweight design makes these tubas exceptionally easy to hold and carry, with their depth and quality of tone capturing the essence of the legendary Besson sound.



# & 187 NEW STANDARD



## TECHNICAL SPECIFICATIONS

---

- 177 Key: Eb
- 187 Key: BBb
- 177 Bore: .650" ( 16,52 mm )
- 187 Bore: .690" ( 17,53 mm )
- Hand-made bell in yellow brass
- Bell diameter: 16" (408 mm )
- 3 valves
- 2 strap rings
- 2 waterkeys
- Finishes: clear lacquer or bright silverplate

## REFERENCES

- BE177-1:** Eb tuba, lacquer
- BE177-2:** Eb tuba, silverplate
- BE187-1:** BBb tuba, lacquer
- BE187-2:** BBb tuba, silverplate



## TECHNICAL SPECIFICATIONS: NEW STANDARD

	KEY	BORE	BELL DIAMETER	BELL METAL	VALVES	WATER KEYS	FINISHES
<b>CORNETS</b> BE120-1 BE120-2	Bb	.460" 11,68 mm	4.76" / 121 mm	Yellow brass	3 valves with top sprung action	2	Clear lacquer or bright silverplate
<b>TRUMPETS</b> BE110-1 BE110-2	Bb	.460" 11,68 mm	4.84" 123 mm	Yellow brass	3 valves with top sprung action	2	Clear lacquer or bright silverplate
BE111-1 BE111-2	Bb	.460" 11,68 mm	4.84" 123 mm	Yellow brass	3 valves with top sprung action	2	Clear lacquer or bright silverplate
<b>TENOR HORNS</b> BE152 -1 BE152-2	Eb	.460" 11,68 mm	8" 203 mm	Yellow brass	3 valves with top sprung action	3	Clear lacquer or bright silverplate
<b>BARITONES</b> BE157-1 BE157-2	Bb	.516" 13,11 mm	8" 203 mm	Yellow brass	3 valves	3	Clear lacquer or bright silverplate
<b>TROMBONES</b> BE130-1 BE130-2	Bb	.500" 12,70 mm	8" 203 mm	Yellow brass	/	2	Clear lacquer or bright silverplate
<b>EUPHONIUMS</b> BE162-1 BE162-2	Bb	.580" 14,72 mm	11" 279 mm	Yellow brass	3 valves	3	Clear lacquer or bright silverplate
<b>EUPHONIUMS</b> BE163-1 BE163-2	Bb	.580" 14,72 mm	12" 304 mm	Yellow brass	4 valves ( 3+1 )	2	Clear lacquer or bright silverplate
<b>EUPHONIUMS</b> BE164-1 BE164-2	Bb	.580" 14,72 mm	11" 279 mm	Yellow brass	4 top action in-line valves	2	Clear lacquer or bright silverplate
BE165-1 BE165-2	Bb	.580" 14,72 mm	11" 279 mm	Yellow brass	4 valves ( 3+1 )	2	Clear lacquer or bright silverplate
<b>TUBAS</b> BE177-1 BE177-2	Eb	.650" 16,52 mm	16" 408mm	Yellow brass	3 valves	2	Clear lacquer or bright silverplate
BE187-1 BE187-2	BBb	.690" 17,53 mm	16" 408mm	Yellow brass	3 valves	2	Clear lacquer or bright silverplate



# ACCESSORIES

## **BRASS INSTRUMENT ACCESSORIES**

---

Besson has a long tradition in the art of brass musical instrument making an enviable world-wide reputation for the quality of its products. This vast experience, coupled with state-of-the-art modern manufacturing techniques brings you an instrument of excellence to be greatly enjoyed and cherished.

Your instrument is a valuable item, well worth your respect, care and attention. Regular maintenance is important and a little time and effort will certainly pay off. Besson selected these accessories specially for you.

To receive a complete list of available accessories, please send your request to: [accessories@buffetcrampon.com](mailto:accessories@buffetcrampon.com)





CASES

---



SUPERSACS

---



MOUTHPIECES

---



CARDHOLDERS

---



CARE KITS

---



OILS AND LUBRICANTS

---



# IMPORTANT MOMENTS IN OUR HISTORY

## 1837

In 1837, Gustave-Auguste Besson (1820-1874), a genius in acoustic science, created the Besson brand in Paris. His new cornet revolutionized the instrument and continues to influence ears, hearts and minds even today. His instruments became famous in Europe, and he has been accredited with over fifty inventions.

## 1858

In 1858, following a long series of legal battles with Adolphe Sax, Gustave-Auguste Besson left Paris to build a factory in London. Over the following years, Besson continued to manufacture in Paris and London, and also had warehouses for distribution in Brussels, Charleroi, Madrid and Barcelona. Following Gustave-Auguste Besson's death in 1874, the company changed its name, becoming Fontaine-Besson in 1880 in France, and Besson in England. At the same time, another English manufacturer was becoming well-known: Henri (John) Distin, born in London in 1819.



## 1872

Henry Distin and his new flugel horn were active in the development of brass bands in England. He created a new line of instruments under his own name, and in 1872 the Distin brand was bought by Boosey (a music publisher since 1792, and a manufacturer of instruments since 1851). D.J. Blaikely, the inventor in 1878 of a compensating tuning system for valves, collaborated with Distin. Together they developed a new range of horns and improved existing models.

## 1930

In the 1930s in Paris, Strasser Marigaux and Lemaire, SML, all produced instruments for Besson with Aubertin. In 1957, Couesnon bought the French company Fontaine Besson.

In London, at the same time, Boosey & Co and Hawkes & Sons of England merged to create the group Boosey & Hawkes.

# MOMENTS

## ***86 years of innovation***

---

At the end of the nineteenth century (1894), the Besson factory of London employed 131 workers, producing 100 brass instruments a week, and no less than 10,000 musical ensembles appeared on their contact lists. In 1925, Besson purchased Quilter, and Wheatstone & Co. in 1940. In 1948, the group Boosey & Hawkes acquired the Besson London brand.

With cutting edge design and manufacture, Besson became the leading brand of euphoniums, cornets, tenor horns, baritones and tubas. Extensive research enables the company to produce the best valve instruments available today, along with an innovative range of rotary valve instruments.

## ***Besson, an international company***

---

By joining the Buffet Crampon Group in 2006, Besson restructured and relaunched its production of professional instruments in Germany and France. A global leader in professional-level clarinets, Buffet Crampon applies all of its technical, acoustic, organizational and marketing talent, as well as its international distribution network, to the Besson brand.

## ***2013***

---

Buffet Group acquires B&S GmbH, a German family-controlled company founded 250 years ago, which is the leading German brass instrument manufacturer. B&S, Hans Hoyer, Melton Meinl Weston and J. Scherzer joined the other brands of Buffet Group.

## ***2016***

---

**BUFFET CRAMPON** The group, now called Buffet Crampon and with a new logo, continues to develop. In April, the American flute company, Powell, joined the group, thus completing the line of wind instruments on offer.

besson.com

CORNETS - TENOR HORNS - BARITONES - EUPHONIUMS - TUBAS

**BUFFET CRAMPON**

5, rue Maurice Berteaux – 78711 Mantes-la-ville - FRANCE  
T: +33 (0)1 30 98 51 30 – F: +33 (0)1 34 78 79 02 - [contact@buffetcrampon.com](mailto:contact@buffetcrampon.com)