



# EVX series EVX 12170



## Valve Regulated Lead Acid Battery

Maintenance-Free Sealed Lead Acid Battery.  
Absorbent Glass Mat (AGM) technology for efficient gas recombination of up to 99%.

### General Design for Cyclic Applications

#### 【Design Life】

- 400 cycles @ 100%DOD at 25°C
- 1800 cycles @ 30%DOD at 25°C

#### 【Operating Temperature Range】

- Nominal Operating Temperature : 25°C (77°F)
- Discharge : -15°C ~ 50°C (5°F~122°F)
- Charge: -15°C ~ 40°C (5°F~104°F)
- Storage: -15°C ~ 40°C (5°F~104°F)

#### 【Equalization Charging Voltage】

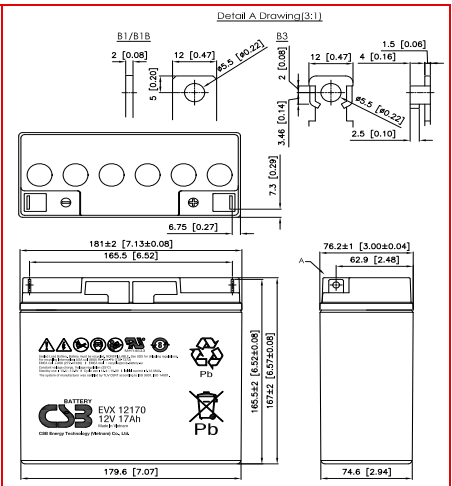
14.4 ~ 15.0 VDC/Unit at 25°C (77°F)

#### 【Self Discharge】

Less than 10% after 90 days, can be stored up to 6 months at 25°C (77°F); Fully recharging is required before usage, and charged sooner if stored at higher temperature than 25°C (77°F).

### Specification

Nominal Voltage	12V (6 cells per unit)	
Nominal Capacity	17 AH @20HR-rate to 1.75V per cell @25°C (77°F)	
Weight	Approx. 5.67 Kg (12.50 lbs)	
Maximum Discharge Current	230A (5sec)	
Internal Resistance	Approx. 13.3 mΩ	
Short Circuit Current	--	
Maximum Charge Current	5.10A	
Terminal types	B1/B1B/B3 terminal	
Terminal tightening torque	30.4±6.1 Kgf·cm / 26.4±5.3 Lbf·in / 3.0±0.6 N·m	
Container Material	ABS (UL 94-HB)	
Dimensions	Length (L)	181.0±2.0 mm      7.13±0.08 inch
	Width (W)	76.2±1.0 mm      3.00±0.04 inch
	Container Height (h)	167.0±2.0 mm      6.57±0.08 inch
	Overall Height (H)	167.0±2.0 mm      6.57±0.08 inch



### Constant Current Discharge Characteristics Unit: A (25°C, 77°F)

F.V/Time	30MIN	45MIN	60MIN	90MIN	2HR	3HR	4HR	5HR	6HR	8HR	10HR	20HR
1.60V	17.0	12.7	10.3	7.34	5.94	4.43	3.55	2.92	2.51	1.98	1.63	0.93
1.67V	16.5	12.3	9.94	7.14	5.77	4.28	3.43	2.84	2.44	1.92	1.58	0.90
1.70V	16.0	11.9	9.67	6.91	5.62	4.16	3.34	2.76	2.37	1.87	1.54	0.88
1.75V	15.5	11.6	9.38	6.70	5.43	4.04	3.24	2.68	2.30	1.81	1.49	0.85
1.80V	15.0	11.2	9.08	6.48	5.25	3.91	3.14	2.59	2.22	1.75	1.44	0.83
1.85V	14.5	10.8	8.79	6.27	5.09	3.79	3.04	2.51	2.15	1.69	1.39	0.80

### Constant Power Discharge Characteristics Unit: W (25°C, 77°F)

F.V/Time	30MIN	45MIN	60MIN	90MIN	2HR	3HR	4HR	5HR	6HR	8HR	10HR	20HR
1.60V	204	152	123	88.1	71.6	53.1	42.6	35.0	30.1	23.8	19.6	10.8
1.67V	198	148	120	85.5	69.5	51.3	41.3	34.1	29.3	23.1	18.8	10.4
1.70V	192	143	116	82.9	67.9	49.9	40.1	33.1	28.4	22.4	18.5	10.2
1.75V	186	139	113	80.4	65.5	48.4	38.9	32.1	27.6	21.7	17.9	9.90
1.80V	180	134	109	77.8	63.3	46.9	37.7	31.1	26.7	21.0	17.3	9.59
1.85V	174	130	106	75.3	61.4	45.4	36.5	30.1	25.8	20.3	16.7	9.29

Please refer to the official site for the latest rating confirmation. URL: [www.csb-battery.com](http://www.csb-battery.com)

Issued: 200930

### Sales Offices

希世比能源科技股份有限公司  
CSB Energy Technology Co., Ltd.

#### BUSINESS HEADQUARTERS

Tel: +886-2-2880-5600  
Fax: +886-2-2888-3300

#### USA OFFICE

Tel: +1-817-244-7777 / 1-(800)3-CSB-USA (272872)  
Fax: +1-817-244-4445

#### SHENZHEN OFFICE (CHINA)

Tel: +86-755-8831-6488/6775/6075  
Fax: +86-755-8831-6548

#### EUROPE (EMEA) OFFICE

Tel: +31(0)180-418-140  
Fax: +31(0)180-418-327

#### SHANGHAI OFFICE (CHINA)

Tel: +86-21-5046-1622/0833/0094  
Fax: +86-21-5046-1046

Recognized under UL 1989,  
and certified by ISO 9001, 14001, 45001, 50001.



#### TAIPEI OFFICE

Tel: +886-2-2880-5600  
Fax: +866-2-2888-3300

#### BEIJING OFFICE (CHINA)

Tel: +86-10-6597-8065/8165/8265  
Fax: +86-10-6597-8565