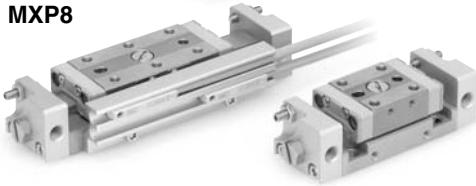


MXP6



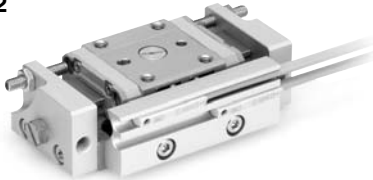
MXP8



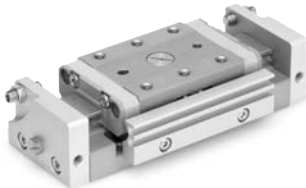
MXP10



MXP12



MXP16



With Shock Absorber



* Exclusive body is to be used for the one with shock absorber.
Changing specifications, such as replacing component parts and retrofitting shock absorber is not possible.



Made to Order Specifications

(For details, refer to pages 1955 to 2021.)

Symbol	Specifications
-X7	PTFE grease
-X9	Grease for food
-X16	Heat treated metal stopper bolt specification
-X23	Axial piping port set screw specification
-X39	Fluororubber seal
-X42	Anti-rust guide specification
-X45	EPDM seal
-X51	Long adjustment nut specification

For clean room specifications, refer to "Pneumatic Clean Series" catalog.

Specifications

Model		MXP6	MXP8	MXP10	MXP12	MXP16
Bore size (mm)		6	8	10	12	16
Piping port size		M3 x 0.5	M5 x 0.8			
Fluid		Air				
Action		Double acting				
Operating pressure		0.15 to 0.7 MPa				
Proof pressure		1.05 MPa				
Ambient and fluid temperature		−10 to 60°C				
Piston speed		50 to 500 mm/s (Adjuster option/Metal stopper: 50 to 200 mm/s)				
Cushion		Rubber bumper Shock absorber (Option is not available for Series MXP6 and MXP8) None (Adjuster option/Metal stopper)				
Lubrication		Non-lube				
Stroke adjuster		Standard equipment (Adjustable on one side only, for the MXP6)				
Stroke adjustment range	Rubber stopper	0 to 5 mm on one side only	Each 0 to 3 mm on both ends			
	Shock absorber	—	Each 0 to 5 mm on both ends			
	Metal stopper	0 to 6 mm on one side only	Each 0 to 5 mm on both ends	Each 0 to 4 mm on both ends		
Auto switch		Reed auto switch (2-wire, 3-wire) Solid state auto switch (2-wire, 3-wire) 2-color indication solid state auto switch (2-wire, 3-wire)				
Stroke length tolerance		+1 0 mm				

Theoretical Output

Bore size (mm)	Piston area (mm ²)	Operating pressure (MPa)						(N)
		0.2	0.3	0.4	0.5	0.6	0.7	
6	28	6	8	11	14	17	20	
8	50	10	15	20	25	30	35	
10	79	16	24	32	40	47	55	
12	113	23	34	45	57	68	79	
16	201	40	60	80	101	121	141	

Standard Stroke

Model	Standard stroke (mm)
MXP6	5, 10
MXP8	10, 20
MXP10	10, 20
MXP12	15, 25
MXP16	20, 30

Mass

Model	Body mass (g)	Additional mass of magnet and rail (g)
MXP6-5	80	10
MXP6-10	105	10
MXP8-10	100	8
MXP8-20	160	12
MXP10-10	130	13
MXP10-20	210	20
MXP12-15	210	17
MXP12-25	320	23
MXP16-20	640	20
MXP16-30	830	23

Shock Absorber Specifications

Shock absorber model	RB0805	RB0806
Applicable slide table	MXP10/12	MXP16
Max. energy absorption (J)	0.98	2.94
Stroke absorption (mm)	5	6
Max. collision speed (mm/s)	50 to 500	
Max. operating frequency (cycle/min)	80	80
Max. allowable thrust (N)	245	245
Ambient temperature range (°C)	-10 to 60	
Spring force (N)	Extended	1.96
	Retracted	4.22
Mass (g)	15	15

* The shock absorber service life is different from that of the MXP cylinder depending on the operating conditions. Refer to the Series RB Specific Product Precautions for the replacement period.