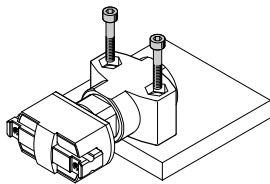


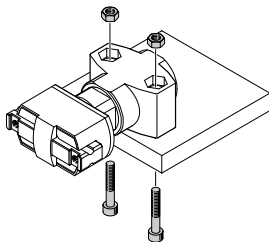
Key features

Mounting options

With through-holes

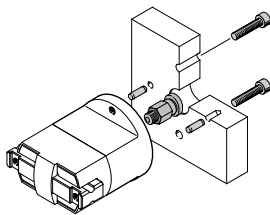


With through-holes, screws and retaining nuts

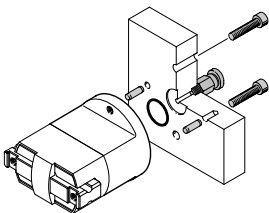


With flange mounting, screws and cylindrical pins

Direct air supply

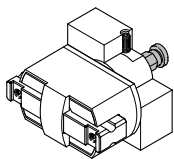


Integrated air supply

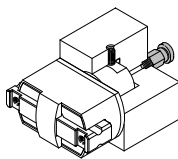


With threaded pin

Direct air supply



Integrated air supply



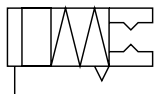
Type codes

001	Series	
HGPM	Parallel gripper, micro	
002	Size	
8	8	
12	12	

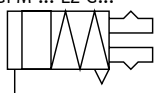
003	Gripper function	
E0	Single-acting, open	
EZ	Single-acting, closed	
004	Mounting method	
G6	Flange with stroke compensation	
G8	Clamping shaft	
G9	Flange	


## Data sheet


Single-acting  
with open gripper jaws  
HGPM-...-EO-G...

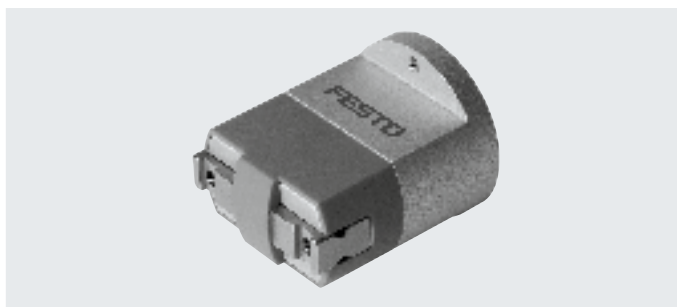


with closed gripper jaws  
HGPM-...-EZ-G...



-  - Size  
8 ... 12 mm

-  - Total stroke  
4 ... 6 mm



General technical data			
Size		8	12
Design		Sloping surface	
Mode of operation		Single-acting	
Gripper function		Parallel	
Number of gripper jaws		2	
Max. weight force per external gripper finger <sup>1)</sup>	[N]	0.05	0.15
Resetting force <sup>2)</sup>			
Gripper jaws open	[N]	1.5	5
Gripper jaws closed	[N]	2	6.5
Stroke per gripper jaw	[mm]	2	3
Pneumatic connection		M3	
Repetition accuracy <sup>3) 4)</sup>	[mm]	< 0.05	
Max. interchangeability	[mm]	0.4	
Max. operating frequency	[Hz]	4	
Centring precision <sup>4)</sup>	[mm]	< Ø 0.15 (only valid for HGPM-...-G8 and HGPM-...-G9)	
Position sensing		None	
Type of mounting			
HGPM-...-E...-G6		With through-hole	
HGPM-...-E...-G8		Clamped	
HGPM-...-E...-G9		With female thread and locating hole	

1) Applies to unthrottled operation

2) Spring resetting force between the jaws

3) Under constant exposure to operating conditions, end-position drift occurs in the direction of movement of the gripper jaws, at 100 consecutive strokes

4) The indicated values are only valid when gripping with compressed air, not with spring force

## Data sheet

Operating and environmental conditions		
Min. operating pressure	[bar]	4
Max. operating pressure	[bar]	8
Operating medium	Compressed air to ISO 8573-1:2010 [7:4:4]	
Note on the operating/pilot medium	Lubricated operation possible (in which case lubricated operation will always be required)	
Ambient temperature	[°C]	+5 ... +60
Corrosion resistance class CRC <sup>1)</sup>		1

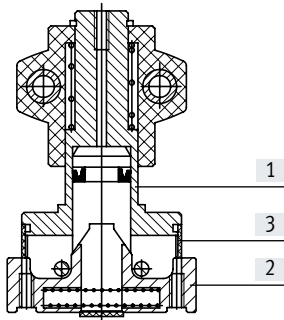
1) Corrosion resistance class CRC 1 to Festo standard FN 940070

Low corrosion stress. Dry indoor application or transport and storage protection. Also applies to parts behind covers, in the non-visible interior area, and parts which are covered in the application (e.g. drive trunnions).

Weight [g]		
Size	8	12
With stroke compensation	19	62
With clamping spigot	11	41
With flange mounting	18	62

## Materials

## Sectional view



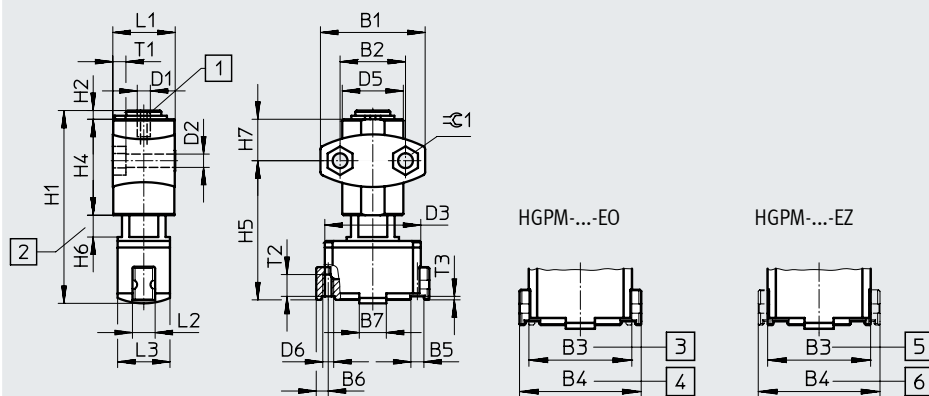
Parallel gripper		
[1]	Housing	Anodised aluminium
[2]	Gripper jaws	Stainless steel
[3]	Cover cap	Polyacetal
-	Note on materials	Free of copper and PTFE
		RoHS-compliant

## Data sheet

### Dimensions

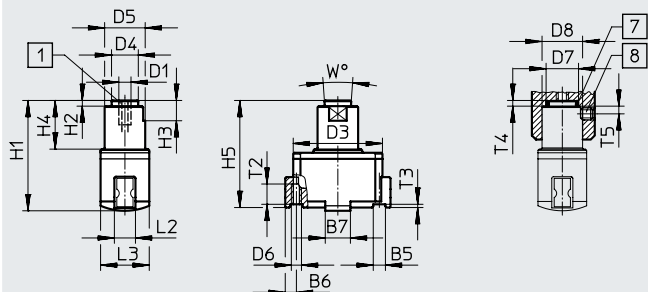
Download CAD data → [www.festo.com](http://www.festo.com)

With stroke compensation – HGPM-...-E...-G6



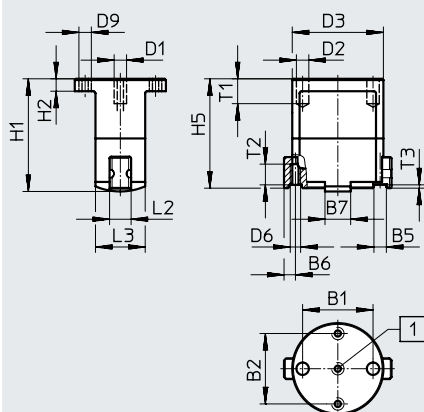
- [1] Supply port
- [2] Stroke compensation
- [3] Closed
- [4] Open (initial position)
- [5] Closed (initial position)
- [6] Open

With clamping spigot – HGPM-...-E...-G8



- [1] Supply port
- [7] O-ring:  
HGPM-08: 6x1  
HGPM-12: 10x1  
(not included in the scope of delivery)
- [8] Threaded pin M3x3 DIN 913  
(not included in the scope of delivery)

With flange mounting – HGPM-...-E...-G9



- [1] Supply port

## Data sheet

Type	B1	B2	B3 ±0.3	B4 ±0.3	B5 +0.05/+0.02	B6 +0.19/-0.23	B7 ±0.1	D1	D2 ∅	D3 ∅
HGPM-08-EO-G6	24 ±0.1	15 ±0.25	22	26	3	2.75	6.2	M3	3.4 ±0.2	22
HGPM-08-EZ-G6										
HGPM-12-EO-G6	35 ±0.1	24 ±0.25	33	39	4	4	9	M3	4.5 ±0.2	33
HGPM-12-EZ-G6										
HGPM-08-EO-G8	–	–	22	26	3	2.75	6.2	M3	–	22
HGPM-08-EZ-G8										
HGPM-12-EO-G8	–	–	33	39	4	4	9	M3	–	33
HGPM-12-EZ-G8										
HGPM-08-EO-G9	17 ±0.02	17 ±0.1	22	26	3	2.75	6.2	M3	3 F8	22
HGPM-08-EZ-G9										
HGPM-12-EO-G9	27 ±0.02	27 ±0.1	33	39	4	4	9	M3	3 F8	33
HGPM-12-EZ-G9										

Type	D4 ∅ ±0.1	D5 ∅	D6	D7 ∅ +0.1	D8 ∅ +0.1	D9	H1 ±0.3	H2	H3	H4	H5
HGPM-08-EO-G6	–	15 ±0.5	M2.5	–	–	–	44.2	2 +0.1/-0.3	–	22 -0.3	32.4 +0.8/-0.65
HGPM-08-EZ-G6											
HGPM-12-EO-G6	–	22 ±0.5	M3	–	–	–	63	3 +0.2/-0.3	–	29 -0.3	46.65 +0.9/-0.7
HGPM-12-EZ-G6											
HGPM-08-EO-G8	6.6	10 h8	M2.5	8	10	–	27.2	1.4 -0.1	5	12 ±0.1	26.9 +0.2/-0.25
HGPM-08-EZ-G8											
HGPM-12-EO-G8	10.6	15 h8	M3	12	15	–	41	1.4 -0.1	7 ±0.1	18 ±0.1	40.15 +0.2/-0.25
HGPM-12-EZ-G8											
HGPM-08-EO-G9	–	–	M2.5	–	–	M3	27.2	3 ±0.2	–	–	26.9 +0.2/-0.25
HGPM-08-EZ-G9											
HGPM-12-EO-G9	–	–	M3	–	–	M3	41	5 ±0.2	–	–	40.15 +0.2/-0.25
HGPM-12-EZ-G9											

Type	H6 +0.7/-0.2	H7 ±0.3	L1 +0.1/-0.3	L2 -0.1	L3 ±0.1	T1	T2 <sup>1)</sup>	T3	W	⊥ <sub>G1</sub>
HGPM-08-EO-G6	0 ... 5	9.5	14.3	5	12	3 -0.2	4	0.8	–	5.7
HGPM-08-EZ-G6										
HGPM-12-EO-G6	0 ... 8	12.5	20.35	7	18	4 -0.2	6	1	–	7.5
HGPM-12-EZ-G6										
HGPM-08-EO-G8	–	–	–	5	12	–	4	0.8	8°	–
HGPM-08-EZ-G8										
HGPM-12-EO-G8	–	–	–	7	18	–	6	1	8°	–
HGPM-12-EZ-G8										
HGPM-08-EO-G9	–	–	–	5	12	min. 6	4	0.8	–	–
HGPM-08-EZ-G9										
HGPM-12-EO-G9	–	–	–	7	18	min. 6	6	1	–	–
HGPM-12-EZ-G9										

1) Do not exceed max. thread screw-in depth

Ordering data							
Single-acting	Size [mm]	Mounting variants					
		With stroke compensation		With clamping spigot		With flange mounting	
		Part no.	Type	Part no.	Type	Part no.	Type
Gripper jaws open	8	197559	HGPM-08-EO-G6	197560	HGPM-08-EO-G8	197561	HGPM-08-EO-G9
	12	197565	HGPM-12-EO-G6	197566	HGPM-12-EO-G8	197567	HGPM-12-EO-G9
Gripper jaws closed	8	197562	HGPM-08-EZ-G6	197563	HGPM-08-EZ-G8	197564	HGPM-08-EZ-G9
	12	197568	HGPM-12-EZ-G6	197569	HGPM-12-EZ-G8	197570	HGPM-12-EZ-G9