

## Support rails without holes

**CLIP-O-FLEX®**

### Application:

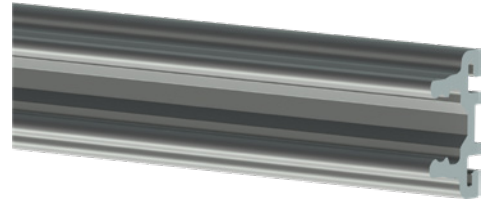
For mounting on a wall, workbench, trolley, workbench attachment or perforated metal plate wall. As a holder for CLIP-O-FLEX clip-on profiles and trays.

### Execution:

- Made of natural anodised aluminium
- Includes cover caps for the left and right sides
- Total length = nominal length + 5 mm (cover caps)

### Advantage:

- Elements can be inserted into the ingenious rail profile at various angles ranging from 0-90° using clip-on profiles and trays no. 50237 091-106
- The profiles can be easily moved sideways within the rails
- A tray, storage compartment or shelf can be inserted into the rail or detached again with only one movement
- Optimum horizontal and vertical flexibility
- Ergonomic and flexible workstation design



<b>Art. no.</b>	<b>50237294</b>
<b>Brand</b>	CLIP-O-FLEX
<b>Manufacturer Part Number</b>	8173859
<b>Length</b>	3000 mm
<b>Material</b>	Aluminium
<b>Surface</b>	Anodised
<b>Number of drill holes</b>	0
<b>Harmonized System Code</b>	76042990
<b>Gross Weight</b>	2.548 kg