

Katrin Hand Towel M Dispenser - White Metal

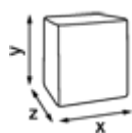
988113

- Eleganter Spender für Handtücher
- Für 2-3 Verpackungseinheiten
- Gebürsteter Stahl (weiß)
- Robust und zuverlässig
- Sichtfenster zeigt an, wann Papier nachgefüllt werden muss
- Einfaches Anbringen, Befüllen und Pflegen
- Abschließbar



ISO9001 ISO14001

Verbraucherpackung



x 275 mm

y 330 mm

z 132 mm

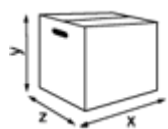


White



2,01 kg

Transportverpackung



x 345 mm

y 150 mm

z 285 mm



1

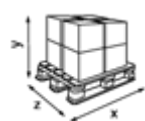


2,2 kg



6414300988113

Transportpalette



x 800 mm

y 1200 mm

z 1200 mm



56

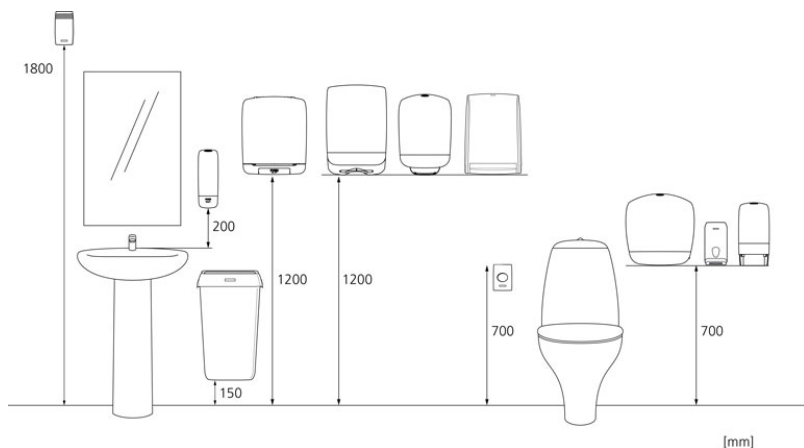


148,2 kg



6414305988118

Maßangaben und Installation



Zugehörige Produkte



343275
**Katrin Classic
Hand Towel C-fold
2**



344388
**Katrin Plus Hand
Towel C-fold 2**



344951
**Katrin Basic Hand
Towel C-fold 2**



61563
**Katrin Plus Hand
Towel Non Stop L3
wide Handy Pack**



61600
**Katrin Plus Hand
Towel Non Stop L3
Handy Pack**



61587
**Katrin Plus Hand
Towel Non Stop M2
wide Handy Pack**



61556
**Katrin Classic
Hand Towel Non
Stop L3 wide
Handy Pack**



61549
**Katrin Classic
Hand Towel Non
Stop L2 wide
Handy Pack**



61570
**Katrin Classic
Hand Towel Non
Stop M2 wide
Handy Pack**



61594
**Katrin Classic
Hand Towel Non
Stop L2 Handy
Pack**



61617
**Katrin Classic
Hand Towel Non
Stop M2 Handy
Pack**



61624
**Katrin Plus Hand
Towel Non Stop
EasyFlush M2
Handy Pack**