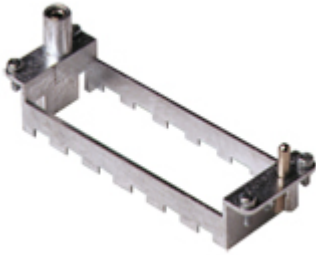


Part number

# CX 02 TF



## Brief description:

for 2 modular units and enclosures size 44.27, frame for housings, for 2 modular units and enclosures size 44.27

### Product description

<b>Version</b>	frames for modular units
<b>Variant</b>	for 2 modular units and enclosures size 44.27
<b>Style</b>	frame for housings
<b>Family</b>	MIXO series, customizable inserts
<b>Size</b>	2 modules

### Further technical details

<b>UL 94 flammability rating</b>	V-0
<b>Weight</b>	44,00 g

### Approvals / Standards

<b>Quality mark</b>	 DNV-GL, EAC
<b>Conformity</b>	CQC, CE

### General ordering information

<b>EAN13 code</b>	8015747041645
<b>Tariff number</b>	85369095

### Packaging Information

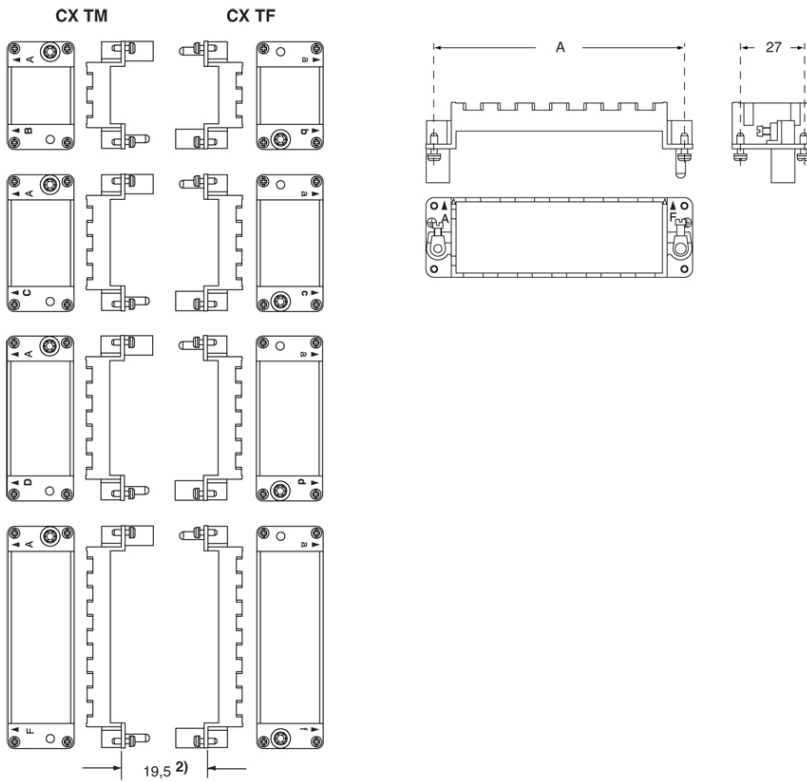
<b>Packaging length</b>	270,00 mm
<b>Packaging height</b>	75,00 mm
<b>Packaging width</b>	180,00 mm
<b>Packaging weight</b>	3,14 kg
<b>Packaging volume</b>	3,65 dm <sup>3</sup>
<b>Packaging description</b>	Carton box
<b>Packaging quantity</b>	60 Pcs
<b>Packaging EAN code</b>	8015747264211
<b>Sub-packaging length</b>	104,00 mm
<b>Sub-packaging height</b>	36,00 mm
<b>Sub-packaging width</b>	180,00 mm
<b>Sub-packaging weight</b>	0,52 kg
<b>Sub-packaging volume</b>	0,67 dm <sup>3</sup>
<b>Sub-packaging description</b>	Carton tray
<b>Sub-packaging quantity</b>	10 Pcs
<b>Sub-packaging EAN barcode</b>	8015747264228

Part number

# CX 02 TF



Catalogue drawings



## Notes

the modular inserts must be installed in suitable frames which in turn are installed in traditional housings or COB panel support