

## 2.54mm PCB connectors

Order code	Manufacturer code	Description
22-0844	22272051	5 WAY 2.54MM KK MOLEX STRAIGHT HEADER RC
22-0852	22272121	12 WAY 2.54MM KK MOLEX STRAIGHT HEADERRC
22-0840	22272031	3 WAY 2.54MM KK MOLEX STRAIGHT HEADER RC
22-0848	22272081	8 WAY 2.54MM KK MOLEX STRAIGHT HEADER RC
22-0842	22272041	4 WAY 2.54MM KK MOLEX STRAIGHT HEADER RC
22-0838	22272021	2 WAY 2.54MM KK MOLEX STRAIGHT HEADER RC
22-0846	22272061	6 WAY 2.54MM KK MOLEX STRAIGHT HEADER RC
22-0850	22272101	10 WAY 2.54MM KK MOLEX STRT HEADER RC

2.54mm PCB connectors	Page 1 of 2
The enclosed information is believed to be correct, Information may change 'without notice' due to product improvement. Users should ensure that the product is suitable for their use. E. & O. E.	Revision A 04/07/2003

## FEATURES AND SPECIFICATIONS

### Features and Benefits

- Sizes 2 to 28 circuits
- Friction lock provides passive lock to connector with ramp
- Good in high vibration applications
- Higher backwall than the 6373 Series
- Various pin lengths available

### Reference Information

Product Specification: PS-10-07

Packaging: Bag

UL File No.: E29179

CSA File No.: LR19980

Mates With: 2695 with locking ramp, 6471 and 7880

Designed In: Inches

### Electrical

Voltage: 250V

Current: 4.0A

Contact Resistance: 20mΩ max.

Dielectric Withstanding Voltage: 1500V

Insulation Resistance: 50K MΩ min.

### Physical

Housing: Nylon, UL 94V-0

Contact: Brass, 0.64mm (.025") square

Plating: See Table

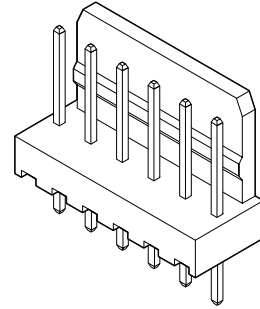
Operating Temperature: 0 to +75°C

**molex®** 2.54mm (.100") Pitch  
KK®

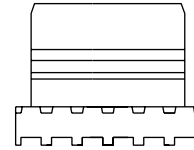
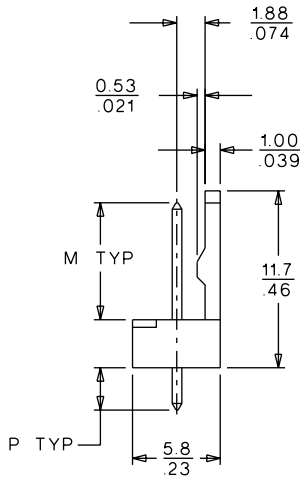
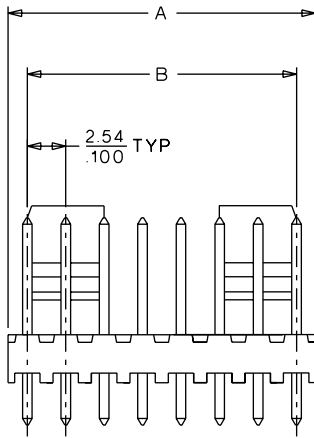
Header

6410

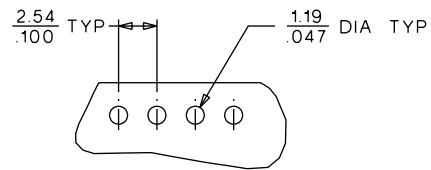
Vertical  
Friction Lock



## CATALOG DRAWING (FOR REFERENCE ONLY)



SINGLE RAMP ON 2-6 CIRCUITS  
TWO RAMPS ON 7-28 CCTS, AS SHOWN.



RECOMMENDED PCB LAYOUT

## ORDERING INFORMATION AND DIMENSIONS

Circuits	Order No.		Dimension			
	Tin	Gold	A	B	M	P
2	• 22-27-2021	• 22-29-2021	5.08 (.200)	2.54 (.100)	7.50 (.295)	3.56 (.140)
3	• 22-27-2031	• 22-29-2031	7.62 (.300)	5.08 (.200)	7.50 (.295)	3.56 (.140)
4	• 22-27-2041	• 22-29-2041	10.16 (.400)	7.62 (.300)	7.50 (.295)	3.56 (.140)
5	• 22-27-2051	• 22-29-2051	12.70 (.500)	10.16 (.400)	7.50 (.295)	3.56 (.140)
6	• 22-27-2061	• 22-29-2061	15.24 (.600)	12.70 (.500)	7.50 (.295)	3.56 (.140)
7	• 22-27-2071	• 22-29-2071	17.78 (.700)	15.24 (.600)	7.50 (.295)	3.56 (.140)
8	• 22-27-2081	• 22-29-2081	20.32 (.800)	17.78 (.700)	7.50 (.295)	3.56 (.140)
9	• 22-27-2091	• 22-29-2091	22.86 (.900)	20.32 (.800)	7.50 (.295)	3.56 (.140)
10	• 22-27-2101	• 22-29-2101	25.40 (1.000)	22.86 (.900)	7.50 (.295)	3.56 (.140)
11	• 22-27-2111	• 22-29-2111	27.94 (1.100)	25.40 (1.000)	7.50 (.295)	3.56 (.140)
12	• 22-27-2121	• 22-29-2121	30.48 (1.200)	27.94 (1.100)	7.50 (.295)	3.56 (.140)
13	• 22-27-2131	• 22-29-2131	33.02 (1.300)	30.48 (1.200)	7.50 (.295)	3.56 (.140)
14	• 22-27-2141	• 22-29-2141	35.56 (1.400)	33.02 (1.300)	7.50 (.295)	3.56 (.140)
15	• 22-27-2151	• 22-29-2151	38.10 (1.500)	35.56 (1.400)	7.50 (.295)	3.56 (.140)

Circuits	Order No.		Dimension			
	Tin	Gold	A	B	M	P
16	• 22-27-2161	• 22-29-2161	40.64 (1.600)	38.10 (1.500)	7.50 (.295)	3.56 (.140)
17	• 22-27-2171	• 22-29-2171	43.18 (1.700)	40.64 (1.600)	7.50 (.295)	3.56 (.140)
18	• 22-27-2181	• 22-29-2181	45.72 (1.800)	43.18 (1.700)	7.50 (.295)	3.56 (.140)
19	• 22-27-2191	• 22-29-2191	48.26 (1.900)	45.72 (1.800)	7.50 (.295)	3.56 (.140)
20	• 22-27-2201	• 22-29-2201	50.80 (2.000)	48.26 (1.900)	7.50 (.295)	3.56 (.140)
21	• 22-27-2211	• 22-29-2211	53.34 (2.100)	50.80 (2.000)	7.50 (.295)	3.56 (.140)
22	• 22-27-2221	• 22-29-2221	55.88 (2.200)	53.34 (2.100)	7.50 (.295)	3.56 (.140)
23	• 22-27-2231	• 22-29-2231	58.42 (2.300)	55.88 (2.200)	7.50 (.295)	3.56 (.140)
24	• 22-27-2241	• 22-29-2241	60.96 (2.400)	58.42 (2.300)	7.50 (.295)	3.56 (.140)
25	• 22-27-2251	• 22-29-2251	63.50 (2.500)	60.96 (2.400)	7.50 (.295)	3.56 (.140)
26	• 22-27-2261	• 22-29-2261	66.04 (2.600)	63.50 (2.500)	7.50 (.295)	3.56 (.140)
27	• 22-27-2271	• 22-29-2271	68.58 (2.700)	66.04 (2.600)	7.50 (.295)	3.56 (.140)
28	• 22-27-2281	• 22-29-2281	71.12 (2.800)	68.58 (2.700)	7.50 (.295)	3.56 (.140)

• US Standard Product, available through Molex franchised distributors