

## Tubular Handles

24321.0530

### Product Description

Tubular handles are used, for example, on machine doors. These tubular handles made of aluminium are characterised by their ergonomic and robust construction and modern design. This version is equipped with angled handle legs (legs).



#### Material

##### Cap

- Plastic, light grey

##### Handle

- Aluminium, plastic coated, similar to RAL 9005 black, matt structure

#### Assembly

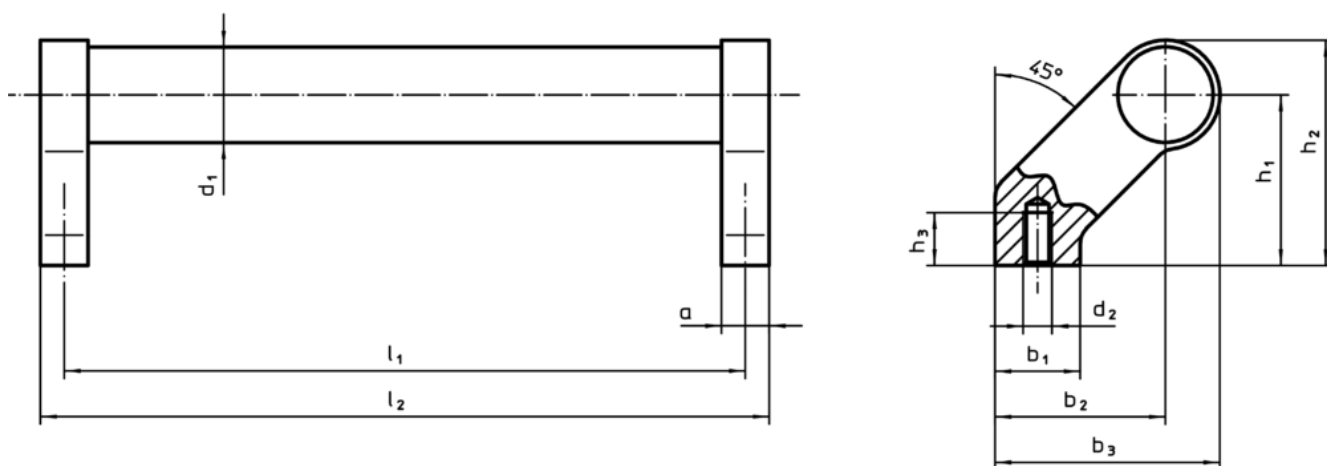
Back mount handle.

#### More information

#### Notes

Special types on request.

### Drawing



### Order information

d <sub>1</sub>	l <sub>1</sub> ±0.25	a	b <sub>1</sub>	b <sub>2</sub>	Dimensions			d <sub>2</sub>	h <sub>1</sub>	h <sub>2</sub>	h <sub>3</sub> min.	l <sub>2</sub>	[g]	Art. No.
					b <sub>3</sub>	[mm]								
black														
20	400	12	24	42	54	M6	42	54	12	412	311	24321.0530		

### Compliance

#### RoHS compliant

Contains lead - compliant according to exceptions 6a / 6b / 6c

#### Contains SVHC substances >0,1% w/w

Contains lead - SVHC list [REACH] as of 10.06.2022

#### Contains Proposition 65 substances



Lead can cause cancer and reproductive harm from exposure  
<https://www.P65Warnings.ca.gov/>

#### Free from Conflict Minerals

This product does not contain any substances designated as "conflict minerals" such as tantalum, tin, gold or tungsten from the Democratic Republic of Congo or adjacent countries.