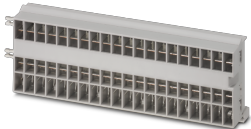


## Busbar - CAPAROC CR EXT20 - 1115674

Please be informed that the data shown in this PDF Document is generated from our Online Catalog. Please find the complete data in the user's documentation. Our General Terms of Use for Downloads are valid (<http://phoenixcontact.com/download>)

Extension busbar with 20 slots for the CAPAROC system. For installation on a DIN rail.




### Your advantages

- ✓ The benchmark that you can customize with lengths that can be adapted to your requirements
- ✓ Particularly easy operation for everyone with the simple Plug and Play design
- ✓ Exceptionally easy design-in with universal busbars up to 45 A



### Key Commercial Data

Packing unit	1
GTIN	 4 063151 040642
GTIN	4063151040642
Custom tariff number	85363030

### Technical data

#### Dimensions

Height	44 mm
Width	133.6 mm
Depth	22.5 mm (incl. DIN rail 7.5 mm)

#### Ambient conditions

Ambient temperature (operation)	-30 °C ... 65 °C (The temperature range of the power module must be taken into consideration)
Ambient temperature (storage/transport)	-40 °C ... 70 °C
Humidity test	96 h, 95 % RH, 40 °C

# Busbar - CAPAROC CR EXT20 - 1115674

## Technical data

### Ambient conditions

Altitude	≤ 4000 m (amsl (above mean sea level))
Shock (operation)	30g (11 ms period, half-sine shock pulse, according to IEC 60068-2-27)
Vibration (operation)	5g (10 ... 150 Hz / 10 cycles / axis / X, Y, Z)

### General

Flammability rating according to UL 94	V-0
Mounting type	DIN rail: 35 mm
Color	light grey RAL 7035
Protection class	III
Degree of pollution	2

### Electrical data

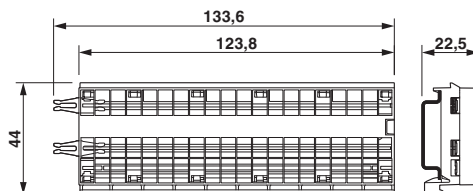
Operating voltage	0 V AC
Rated voltage	24 V DC
Rated current I <sub>N</sub>	45 A DC (Total current input)

### Standards and Regulations

Standards/specifications	EN 61000-6-2 EMC – Immunity for industrial areas
	EN 61000-6-3 EMC – Emission for residential, business and commercial properties and small operations
	EN 60068-2-78 Environmental influences – Moisture and heat, constant
	EN 50178 Equipping power installations with electronic equipment
	EN 60068-2-6 Environmental influences – Vibrations (sinusoidal)
	EN 60068-2-27 Environmental influences – Shocks

## Drawings

Dimensional drawing



## Classifications

eCl@ss

eCl@ss 10.0.1	27140401
eCl@ss 11.0	27140401

# Busbar - CAPAROC CR EXT20 - 1115674

## Classifications

eCl@ss

eCl@ss 9.0	27141116
------------	----------

## Approvals

Approvals

Approvals

UL Listed / cUL Listed / cULus Listed

Ex Approvals

## Approval details

UL Listed		<a href="http://database.ul.com/cgi-bin/XYV/template/LISEXT/1FRAME/index.htm">http://database.ul.com/cgi-bin/XYV/template/LISEXT/1FRAME/index.htm</a>	FILE E 123528
-----------	--	---	---------------

cUL Listed		<a href="http://database.ul.com/cgi-bin/XYV/template/LISEXT/1FRAME/index.htm">http://database.ul.com/cgi-bin/XYV/template/LISEXT/1FRAME/index.htm</a>	FILE E 123528
------------	--	---	---------------

cULus Listed			
--------------	--	--	--

## Accessories

Accessories

Device circuit breakers

Busbar - CAPAROC CR 20 - 1110989



Busbar for CAPAROC system with 20 slots. For installation on a DIN rail.

## Busbar - CAPAROC CR EXT20 - 1115674

### Accessories

Busbar - CAPAROC CR 8 - 1115672



Busbar for the CAPAROC system with 8 slots. For installation on a DIN rail.

---

---