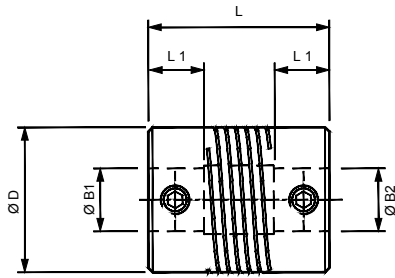
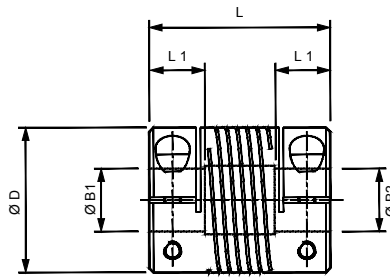


## Aluminium Multi-Helix Flexible 3 Beam Couplings

### Set Screw Hubs



### Clamp Hubs



### Materials & Finishes

**Couplings:** Aluminium L168 or better

**Fasteners:** Alloy steel, black oiled

### Temperature Range

-40°C to +120°C

### 3-BEAM COUPLINGS: DIMENSIONS & ORDER CODES

Coupling Type & Size	Set Screw Style	Clamp Type	ØD mm	L mm	L1 mm	Bore Diameters			Mass kgx10-3	Fasteners				Angular Offset Deg.	Parallel Offset mm	Torsional Stiffness Nm/rad	Peak Torque Nm	
						Min B1	Min B2	Max B1 & B2		Set Screw	Cap Screw	Torque Nm	Wrench mm					
Relieved	6	724.06	-	6.4	12.7	3.2	1.0	2.0	3.0	0.7	M2	-	0.2	0.9	3.0	0.07	1.53	0.40
	9	724.09	-	9.5	14.2	4.5	2.0	3.0	3.18	2.2	M2.5	-	0.55	1.3	3.0	0.1	5.4	0.40
		-	725.09								-	-	M1.6	-				
	13	724.13	-	12.7	19.1	6.0	3.0	4.0	5.0	5.0	M3	-	0.90	1.5	5.0	0.127	28.0	0.90
		-	725.13								-	-	M2	-				
	16	724.16	-	15.9	20.3	6.5	3.0	4.0	6.35	8.2	M4	-	2.2	2.0	5.0	0.127	38.0	1.50
		-	725.16								-	-	M2.5	-				
	19	724.19	-	19.1	22.9	6.5	4.0	4.76	8.0	12.8	M4	-	2.2	2.0	5.0	0.127	65.0	2.50
		-	725.19								-	-	M2.5	-				
	25	724.25	-	25.4	31.8	9.0	5.0	6.0	10	32.6	M5	-	4.6	2.5	5.0	0.127	121	4.0
-		725.25	-								-	M3	-	4.6				
32	724.32	-	31.8	44.5	12.0	6.0	8.0	14	70	M6	-	7.6	3.0	5.0	0.127	238	8.0	
	-	725.32								-	-	M4	-					7.6

① Length of supported bore.

③ **Peak torque.** Select a size where Peak Torque exceeds the application torque x service factor. (see page 4)

② Max. compensation values are mutually exclusive.

### BORE SIZES 3-BEAM COUPLINGS

Coupling Size	ØB1, ØB2 +0.03mm/-0mm (+0.0012/-0)														
	1	2	3	(1/8")	4	(3/16")	5	6	(1/4")	8	(3/8")	10	12	(1/2")	14
6	○	●	●												
9		○	●	●											
13			○	○	●	●	●								
16			○	○	●	●	●	●	●						
19					○	●	●	●	●	●					
25							○	●	●	●	●	●			
32								○	○	●	●	●	●	●	●
Bore ref.	8	11	14	16	18	19	20	22	24	28	31	32	35	36	38

○ B1 only    ● B1 & B2