

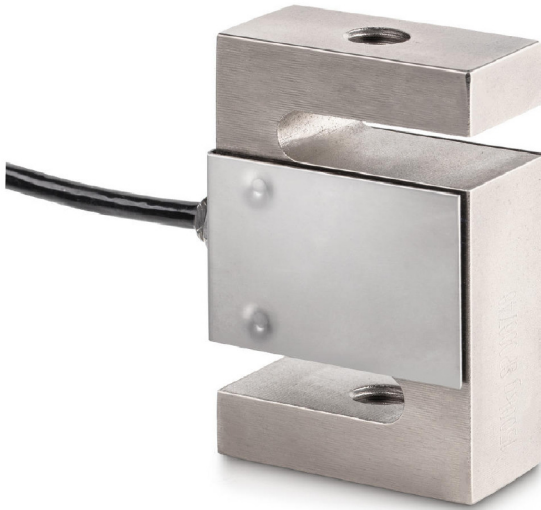
KERN CS5000-3P1

4 wire 4-wire measuring cells for force and mass measurement

KERN[®]

Piktogramme

STANDARD



Measuring system

Combined Error:	0,020 %
Load cell connection:	4-Leiter
Nominal sensitivity:	2
Resolution Load cell à Verifiable:	3000 e
Weighing capacity [Max]:	5 t
Y value:	10000

Environmental conditions

Maximum operating temperature:	65 °C
Maximum operating temperature:	40 °C
Minimum ambient temperature:	-35 °C
Minimum operating temperature:	-10 °C

Category

Brand:	Sauter
--------	--------

Packaging & shipping

Delivery:	24 h
Dimensions packaging (WxDxH):	205 x 170 x 60 mm
Gross weight:	1,460 g
Net weight:	1,360 kg
Shipping method:	Parcel service

Construction

Cable length:	6 m
Dimensions (WxDxH):	76,2 x 101,6 x 27,2 mm