

Features

- Rated currents up to 6A
- General purpose filtering performance
- Quick connect (6.3*0.8mm)
- Customized

RS PRO EMI Filters

RS Stock No.: 2780353



RS PRO is the own brand of RS. The RS PRO Seal of Approval is your assurance of professional quality, a guarantee that every

part is rigorously tested, inspected, and audited against demanding standards. Making RS PRO the Smart Choice for our customers.

Product Description

High performance IEC Inlet EMI filter Applications:

- *Specially designed for small household equipment*
- *Power supply equipment*
- *Medical equipment*
- *Test and measurement equipment*
- *Small and medium-sized machines*

General Specifications

IEC inlet socket filter fast-on connection (6.3*0.8mm)
The compact size can be applied to various situations.
There are a variety of parts and combinations to meet different customer's EMC tests
Customized products according to customer's requirements

Electrical Specifications

*Size(Length*Width*Height)* 61.0*29.5*63mm

<i>Weight</i>	0.08kgs
<i>Mounting Hole Spacing</i>	40.5mm

Mechanical Specifications

Rated Voltage Max. 115/250VAC

<i>Rated currents</i>	6A
<i>Operating frequency</i>	50/60Hz
<i>Hipot Rating</i>	Line to Ground 2250Vdc Line to Line 500Vdc
<i>Temperature range</i>	-25° C~+100° C
<i>Leakage current</i>	0.4mA/0.8mA
<i>Inductance</i>	2x2.5mH
<i>Capacitance</i>	Cx:0.22uF Cy:3300pF
<i>Resistance</i>	R:1M ohm

Protection Category

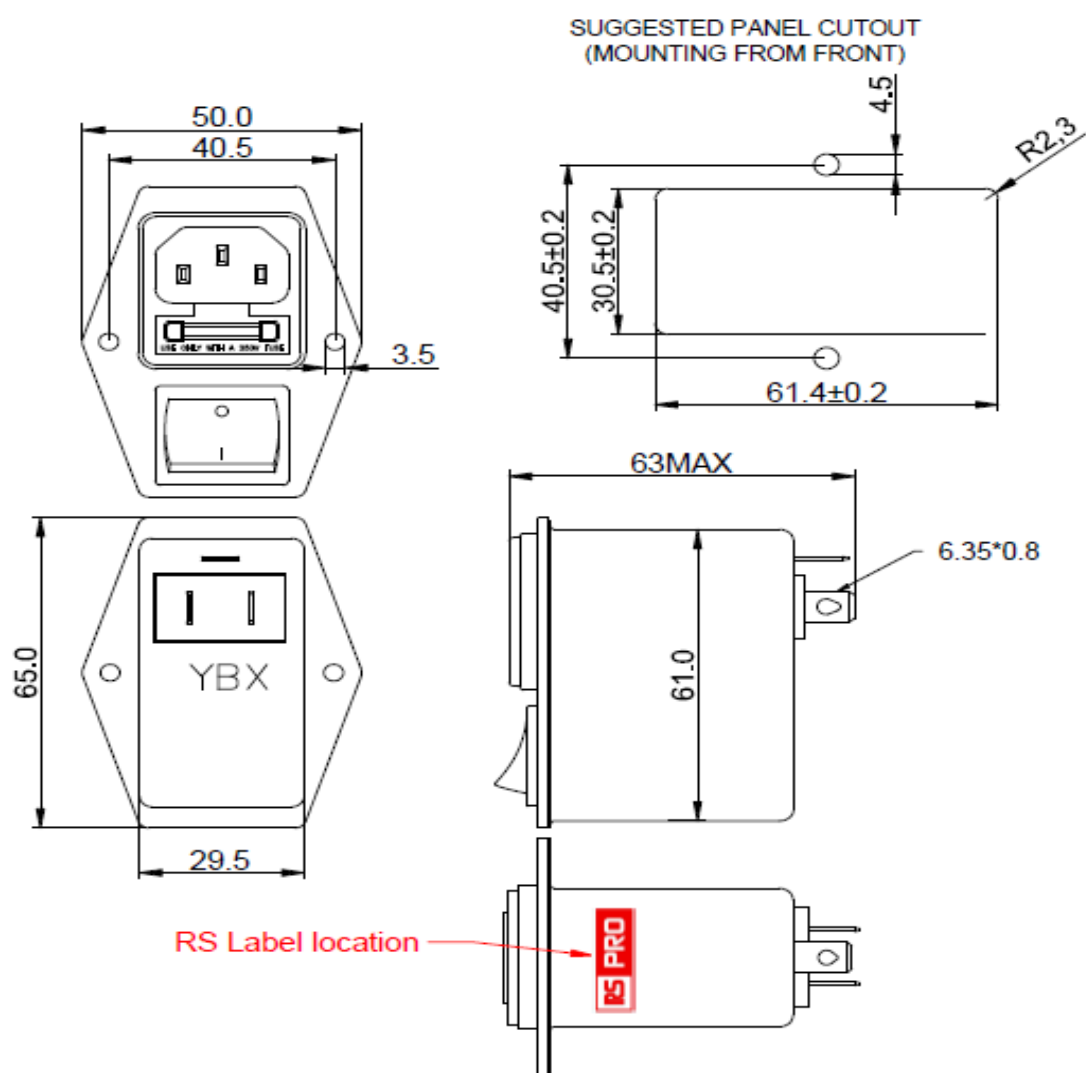
IP Rating IP40

Approvals

Declarations UL TUV CQC CE UKCA REACH ROHS

Safety Standard UL/EN 60939, UL1283; CSA C22.2 No.8;
GB/T 15287; GB/T 15288-1994;

Physical Dimensions



Electrical Schematic

