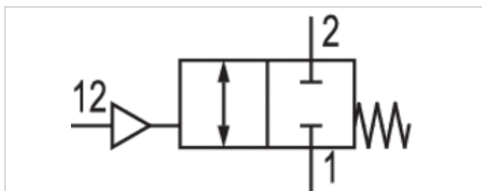


Stop valve

- Qn 2▶1 = 340-680 l/min
- Internal thread / External thread
- thread-in



Version	Poppet valve
Working pressure min./max.	2 ... 10 bar
Ambient temperature min./max.	-20 ... 80 °C
Medium temperature min./max.	-20 ... 80 °C
Medium	Compressed air
Weight	See table below



Technical data

Part No.	Port 1	Port 2	Port 12	Flow	Weight
				Qn 2▶1	
0821003075	G 1/8	G 1/8	G 1/8	340 l/min	0,059 kg
0821003076	G 1/4	G 1/4	G 1/4	680 l/min	0,103 kg

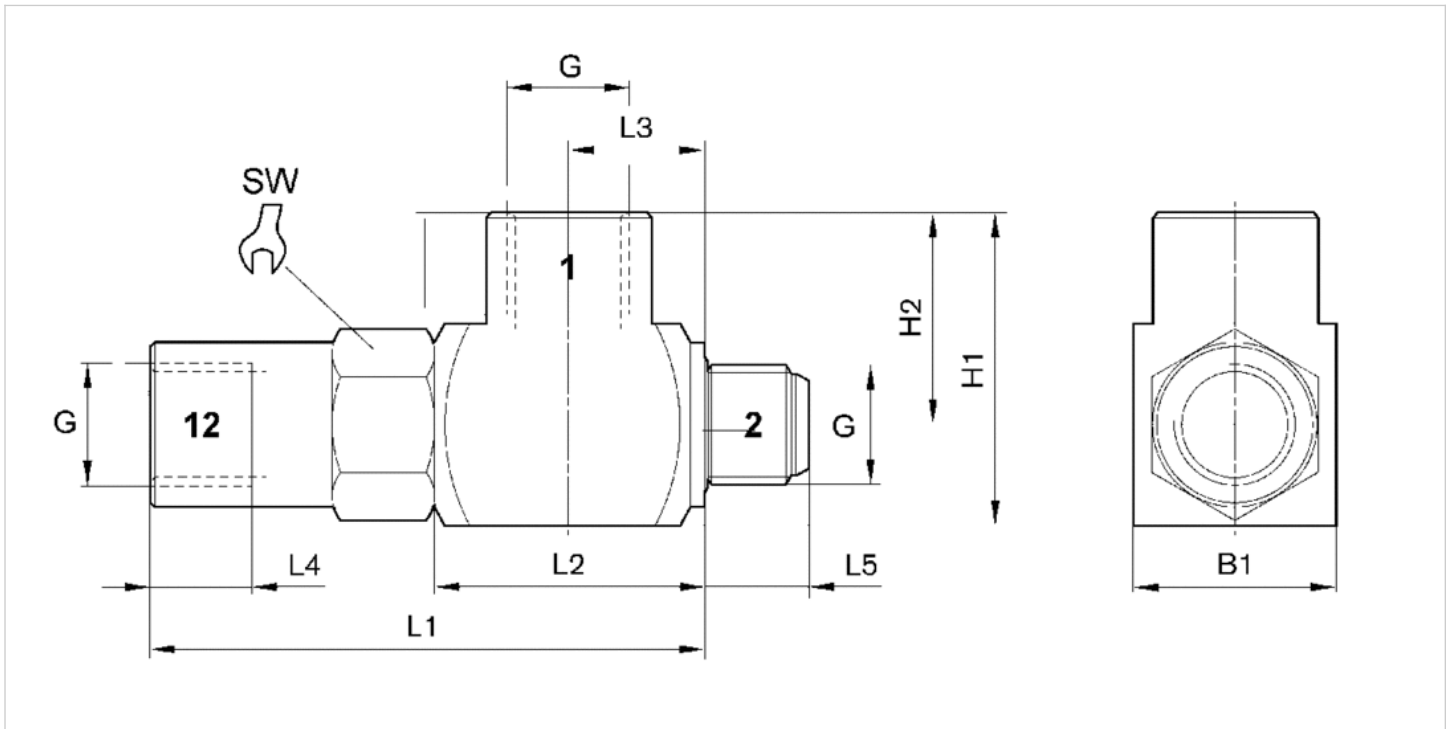
Nominal flow Qn at 6 bar and $\Delta p = 1$ bar

Technical information

Material	
Housing	Brass, nickel-plated
Seals	Acrylonitrile butadiene rubber

Dimensions

Dimensions



Dimensions

Part No.	Port G	L1	L2	L3	L4	L5	H1	H2	B1	SW
0821003075	G 1/8	50.5	25.4	12.7	8	7.5	24.5	16	17	15
0821003076	G 1/4	59.6	29	14.5	12	11.4	34	23	22	18