

## SW-514

## COMPACT INDUSTRIAL 4 PORT GIGABIT ETHERNET SWITCH

- 4 Gigabit Ethernet ports
- Wide voltage input range: +5V to +30V DC - can be powered by a variety of sources
- Industrial temperature range: -40°C to +80°C/-40°F to +176°F - works in extreme conditions
- Redundant dual power inputs - reduces risk of power outage
- Jumbo Frame support upto 9K frames
- Integral DIN mount



+5 to +30 Volt power input enables the device to be run from a standard car battery - ideal for in vehicle applications



Non conducting polyamide casing with removable numbered power terminal for easy wiring



Integral DIN mount and slim design takes up minimal cabinet space

**SW-514 COMPACT INDUSTRIAL 4 PORT GIGABIT ETHERNET SWITCH**

Jumbo Frame support up to 9K frames

All Ethernet ports are Auto MDI/MDIX supporting straight through or crossover Ethernet cables

Integral DIN mount with ground

Automatic detection of data transmission speed: 10 or 100 or 1000 Mbps



-40°C to +80°C/-40°F to +176°F temperature range

Non-conducting polyamide case

Compact case - all round small profile

Power consumption is optimised based on the status of the link device

Dual redundant power input: +5VDC to +30VDC

Easy Wire Removable screw terminal block

---

**Connectors**

Screw Terminals	3.5mm pitch, #22 - #14, 0.5mm <sup>2</sup> -2.5mm <sup>2</sup> pin power supply
Wire Thickness	0.150 inch, 3.81mm, 20 pins, 12+8 screw terminals, #26 - #16 AWG, 0.14mm <sup>2</sup> -1.3mm <sup>2</sup>

---

**Power Supply**

Power Consumption	3.6W Max: 550mA@+5VDC/90mA@+30VDC
Power Supply input	Unregulated +5V to +30Volts DC, reverse polarity protection
Isolation	1500VRMS Magnetic isolation from Ethernet

---

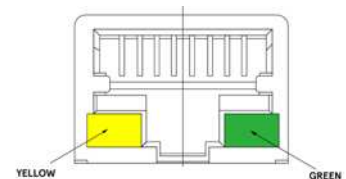
**Environmental**

Operating Temperature	-40°C to +80°C/-40°F to +176°F
Storage Temperature	-40°C to +80°C/-40°F to +176°F
Ambient Relative Humidity	5 to 95% (non-condensing)

---

**Magjack LED Information**

Link/Activity	Solid	Connection established
	Flashing	Data communication
Speed	Yellow	1000Mbps
	Green	100Mbps




---

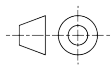
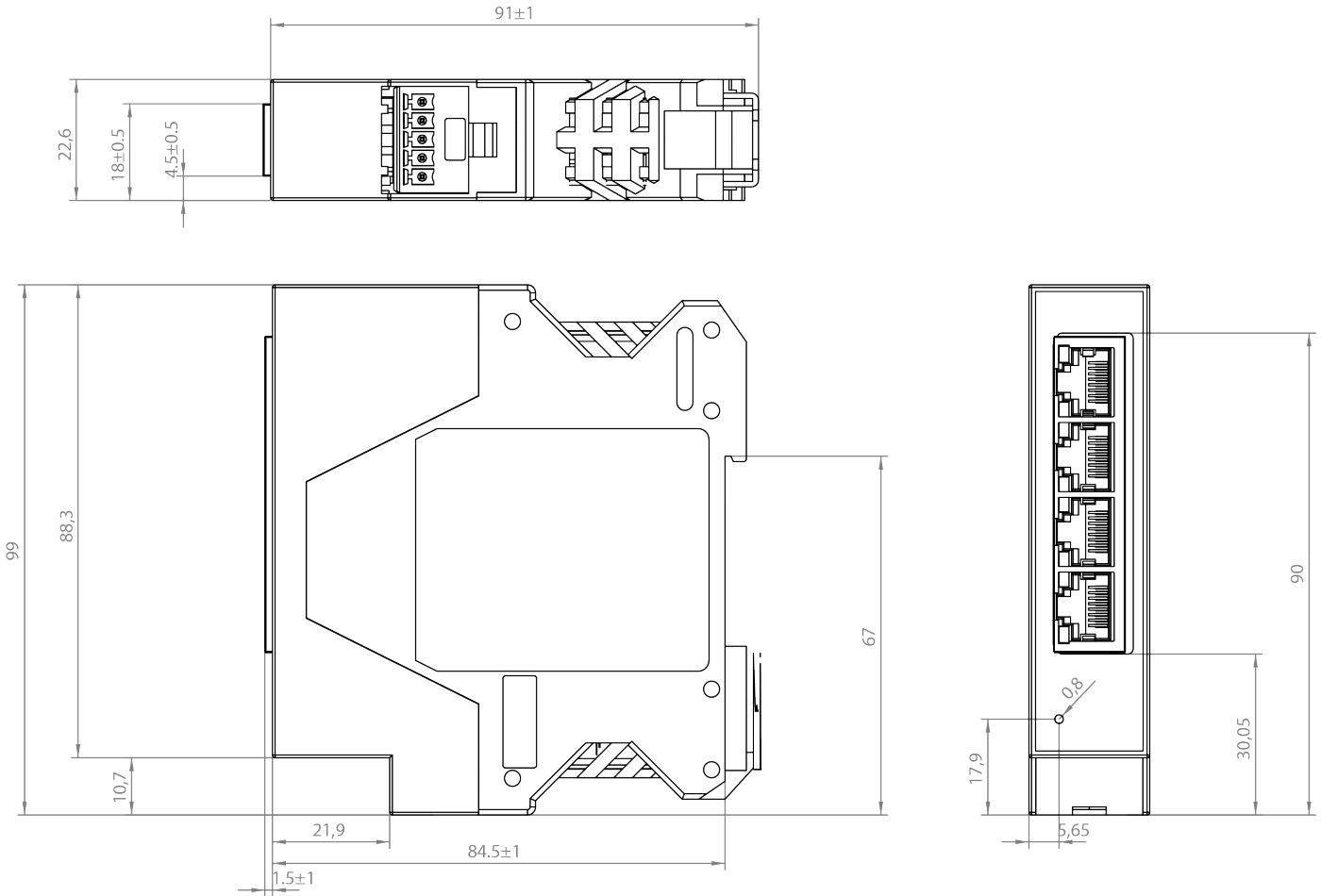
**Ethernet**

Ethernet Port	4 x RJ45 jack, 10/100/1000Mbps autosensing, crossover auto sensing (Auto MDIX)
Protection	1,500 Volts magnetic isolation between ports
Housing	IP-20 rated non-conducting polyamide case

---

SW-514

COMPACT INDUSTRIAL 4 PORT GIGABIT ETHERNET SWITCH



All measurements in mm &amp; ±0.1mm unless otherwise indicated

**Power Terminal Pin Outs**

PIN	FUNCTION
<b>1</b>	<b>-V</b>
<b>2</b>	<b>+VA</b>
<b>3</b>	<b>+VB</b>
<b>4</b>	<b>-V</b>
<b>5</b>	<b>Functional Earth</b>

**Ethernet Ports x4 Pin Outs**

PIN	FUNCTION
<b>1</b>	<b>TxRxA+</b>
<b>2</b>	<b>TxRxA-</b>
<b>3</b>	<b>TxRxB+</b>
<b>4</b>	<b>TxRxC+</b>
<b>5</b>	<b>TxRxC-</b>
<b>6</b>	<b>TxRxB-</b>
<b>7</b>	<b>TxRxD+</b>
<b>8</b>	<b>TxRxD-</b>

Lifetime Warranty and Support:

We can help with every aspect of your project, from getting you up and running to custom application.

SW-514

**COMPACT INDUSTRIAL 4 PORT GIGABIT ETHERNET SWITCH**

**Packaging Information**

Packaging	Quick Start Guide
Device	Ethernet Switch 4 port
Packaged Weight	0.19 kg, 5.64 ounces
Packaged Dims	160x135x49 mm, 6.3x5.3x1.9 inches
GTIN Universal Code	837324004854

**Approvals**

Industry Approvals	Microsoft Certified Gold Partner, WEEE, RoHS, AEO (C-TPAT), CE, UKCA, METL Complies with UL62368-1
--------------------	----------------------------------------------------------------------------------------------------

**Product Support**

Warranty	Lifetime - online registration required
Support	Lifetime web, email and phone support from fully qualified, friendly staff who work in and alongside the Product Development Team

**Additional Information**

OEM option	Available for bulk buy OEM
Made In	Manufactured in Great Britain (GB) by Brainboxes - Winner 2005 European Electronics Industry Awards 'Manufacturer of the Year'
Customisable	Brainboxes operate a 'Perfect Fit Custom Design' policy for volume users. More info:sales@brainboxes.com



**PW-600**  
Power supply with connectors for UK, USA, EU and AUS mains socket. 'Tails' are suitable for connecting to screw terminal blocks.



**PW-650**  
Power supply with USB connector and prewired screw terminal block. Suitable for use with 5V USB ports.



**SW Range**  
Switch products available in a range of formats and specifications.  
[www.brainboxes.com](http://www.brainboxes.com)