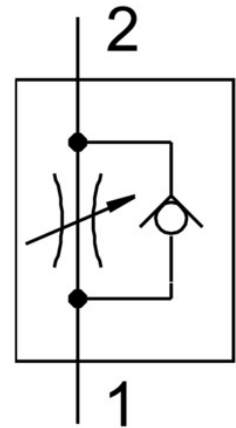


One-way flow control valve VFOE-LS-T-G18-Q8

Part number: 8068749

FESTO



Data sheet

Feature	Value
Valve function	Supply air one-way flow control function
Pneumatic connection, port 1	QS-8
Pneumatic connection, port 2	G1/8
Type of actuation	Manual
Adjustment component	Rotary knob with detent
Type of mounting	Screw-in
Standard nominal flow rate in flow control direction	170 l/min
Standard nominal flow rate in blocked direction	130 l/min ... 200 l/min
Ambient temperature	-10 °C ... 60 °C
Material housing	PBT
Mounting position	optional
Symbol	00991453
Width across flats	13 mm
Rotatability	360°/no continuous swivelling permissible
Operating pressure complete temperature range	0.02 MPa ... 1 MPa
Operating pressure complete temperature range	0.2 bar ... 10 bar
Operating pressure complete temperature range	2.9 psi ... 145 psi
Standard flow rate in flow control direction 0.6->0 MPa (6->0 bar, 87->0 psi)	270 l/min
Standard flow rate in non-return direction 0.6->0 MPa (6->0 bar, 87->0 psi)	320 l/min ... 390 l/min
Operating medium	Compressed air to ISO 8573-1:2010 [7:4:4]
Note on operating and pilot medium	Lubricated operation possible (in which case lubricated operation will always be required)
PWIS conformity	VDMA24364 zone III
Media temperature	-10 °C ... 60 °C
Max. tightening torque	6 Nm
Nominal torque	5 Nm
Tolerance for nominal tightening torque	± 20%

Feature	Value
Product weight	9.5 g
Note on materials	RoHS-compliant
Material cover	PBT
Material dynamic seals	HNBR
Material threaded bolt	Galvanised steel
Material release ring	PBT
Material static seals	NBR