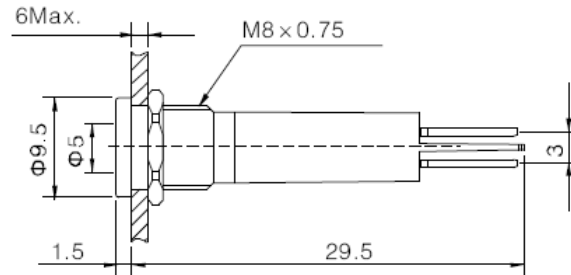


## Datasheet

Item no. 1605965 – Red      1605966 – Green  
1605967 – Blue      1605968 – White

V1\_11172017\_01\_en



6 MAX: means the panel thickness, the max thickness for the panel no more than 6mm.

### LED Indicator

Mounting Diameter	:8 mm
LED colour	:b/n 1605965 – Red b/n 1605966 – Green b/n 1605967 – Blue b/n 1605968 – White
LED Voltage	:12V AC/ DC
Forward Current	:25 mA
Forward Voltage	:2.1 V – Red 3.1 V – Green/ Blue/ White
Light Intensity	:b/n 1605965 – 70 mcd b/n 1605966 – 200 mcd b/n 1605967 – 60 mcd b/n 1605968 – 350 mcd
Head Shape	:Flat
Body Material	:Stainless Steel
Base Material	:PA
LED Life	:40,000 hours
Operating & Storage Temperature	:-20°C to 55°C
Operating & Storage Humidity	:45 -85% RH

This is a publication by Conrad Electronic SE, Klaus-Conrad-Str. 1, D-92240 Hirschau (www.conrad.com).

All rights including translation reserved. Reproduction by any method, e.g. photocopy, microfilming, or the capture in electronic data processing systems require the prior written approval by the editor. Reprinting, also in part, is prohibited. This publication represents the technical status at the time of printing.

© Copyright 2017 by Conrad Electronic SE.