

products

technical data

quality

environmental

news

about us

contact us

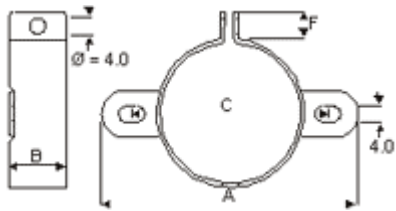
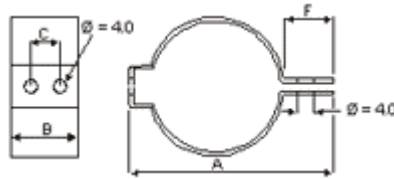
home

ACCESSORIES

Mounting Clips

DIMENSIONS (mm)
Horizontal Mounting

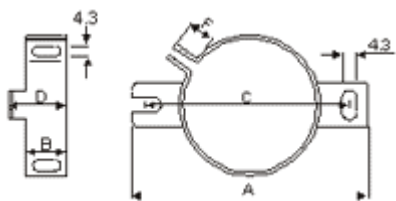
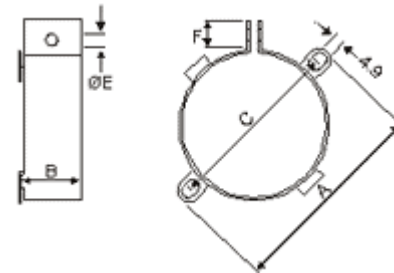
| TYPE | CAN DIA | A | B | C | F |
|------|---------|----|------|------|----|
| H1 | 25 | 40 | 22.3 | 12.8 | 10 |
| H2 | 35 | 52 | 22.3 | 12.8 | 10 |



Vertical Mounting

| TYPE | CAN DIA | A | B | C | F |
|------|---------|----|----|------|-----|
| V2 | 25 | 49 | 19 | 37 | 10 |
| V3 | 35 | 58 | 19 | 45 | 9 |
| V9 | 40 | 65 | 19 | 52.4 | 9.5 |

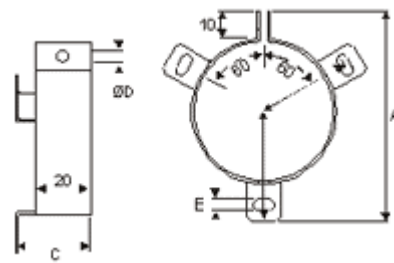
| TYPE | CAN DIA | A | B | C | E | F |
|------|---------|------|------|------|---|-----|
| V4 | 51 | 75 | 25.4 | 64 | 5 | 10 |
| V6 | 45 | 69.5 | 17.4 | 58 | 4 | 10 |
| V8 | 63.5 | 88.9 | 25.4 | 77.5 | 5 | 9.5 |



| TYPE | CAN DIA | A | B | C | E | F |
|---------|---------|----|------|----|------|----|
| UTE2736 | 35 | 63 | 12.2 | 54 | 17.2 | 10 |

| TYPE | CAN DIA | A | B | C | D | E | F |
|------|---------|-----|------|----|---|-----|---|
| V10 | 65 | 90 | 40 | 30 | 5 | 4.5 | - |
| V11 | 76 | 103 | 45.5 | 30 | 5 | 4.5 | - |
| V90 | 90 | 116 | 53.5 | 30 | 5 | 4.5 | - |

| | | | | | | | |
|---------|----|------|------|----|-----|-----|------|
| UTE2737 | 50 | 75.5 | 33.5 | 27 | 4.3 | 4.3 | 39.5 |
| UTE2738 | 65 | 88.5 | 39 | 27 | 4.3 | 4.3 | 45 |
| UTE2739 | 72 | 97 | 44 | 28 | 4.3 | 4.3 | 50 |

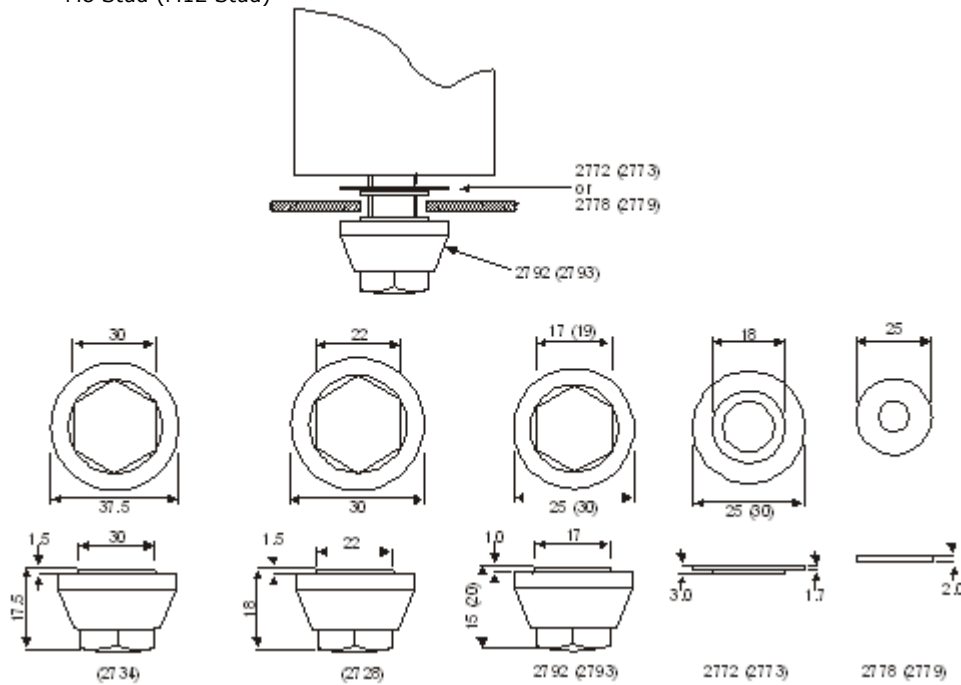


Material
Zinc plated steel

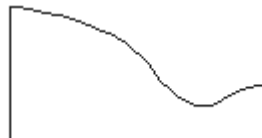
Note
When using mounting clamps care should be taken not to obscure any safety vent in the can.

Stud Mounting Kits

INSULATED VERSION
M8 Stud (M12 Stud)



NON-INSULATED VERSION
M8 Stud (M12 Stud)



Kit Contents and Ordering Information

STANDARD KITS

| Part code | Description | 2740 | 2741 | 2782 | 2785 |
|-----------|-------------------------|-----------|------------|---------------|----------------|
| 2352 | Steel washer M8 | | | ● | |
| 2353 | Steel washer M12 | | | | ● |
| 2772 | Stepped poly washer M8 | ● | | | |
| 2773 | Stepped poly washer M12 | | ● | | |
| 2778 | Plain poly washer M8 | ● | | | |
| 2779 | Plain poly washer M12 | | ● | | |
| 2788 | Steel nut M12 | | | | ● |
| 2789 | Steel nut M8 | | | ● | |
| 2792 | Nylon nut M8 | ● | | | |
| 2793 | Nylon nut M12 | | ● | | |
| | Kit description | Ins M8 | Ins M12 | Non-ins M8 | Non-ins M12 |

SPECIAL KITS

| Part code | Description | 2684 | 2685 | 2690 | 2691 | 2692 | 2693 | 2695 |
|-----------|-------------------------|------|------|------|------|------|------|------|
| 2352 | Steel washer M8 | | | | | ● | | |
| 2353 | Steel washer M12 | | | ● | | | ● | |
| 2772 | Stepped poly washer M8 | ● | | | ● | ● | | |
| 2773 | Stepped poly washer M12 | | ● | ● | | | ● | ● |
| 2778 | Plain poly washer M8 | | | | ● | ● | | |
| 2779 | Plain poly washer M12 | | | | | | ● | ● |
| 2788 | Steel nut M12 | | ● | ● | | | ● | ● |
| 2789 | Steel nut M8 | ● | | | ● | ● | | |
| 2728 | Nylon nut M12 | | | | | | | |
| 2734 | Nylon nut M12 | | | | | | | |

