

## Linear Motion Guide DA 0115 RC with Ball Carriage

**Material:** Track made from aluminium.

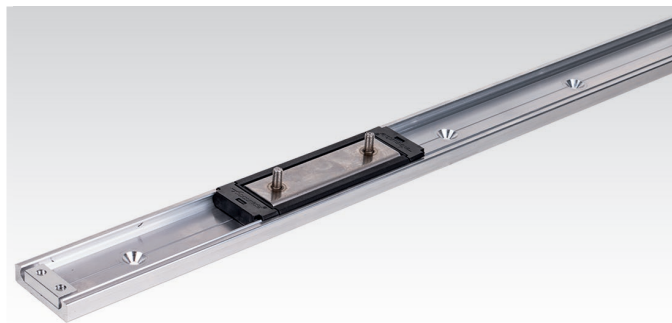
Carriage: Stainless steel housing with plastic sealings.

On choice: With stainless steel balls (greased) or polymer balls (grease free).

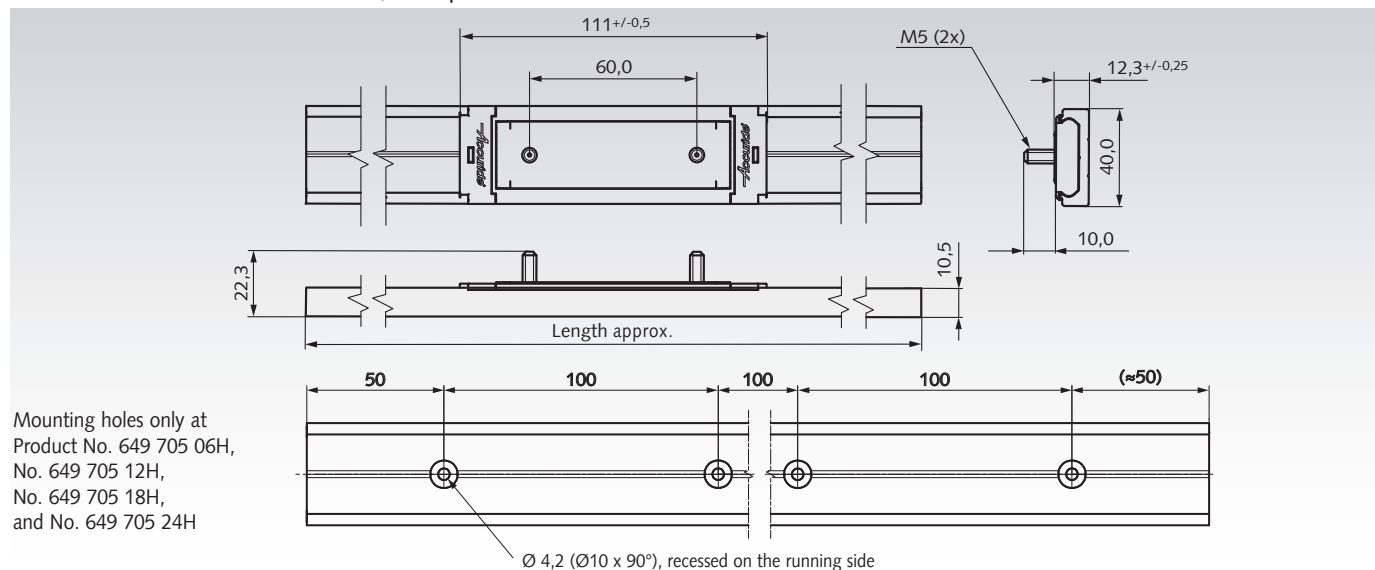
Linear guide for universal use.

- Four track lengths on choice (for to cut by the customer).
- Without boreholes, or with mounting holes.
- Several carriages can be used on one track.
- Resistant against corrosion and dirt.
- All parts have to be ordered seperately.
- Long service life, tested to 80,000 meters of travel distance.
- Temperature range: -20°C to +70°C.

Ordering details: e.g.: 1x Prod. No. 649 705 01, Carriage,  
1x Prod. No. 649 705 06H, Track 600mm with Mounting Holes,  
2x Prod. No. 649 705 03, End Stop



Accuride



Mounting holes only at  
Product No. 649 705 06H,  
No. 649 705 12H,  
No. 649 705 18H,  
and No. 649 705 24H

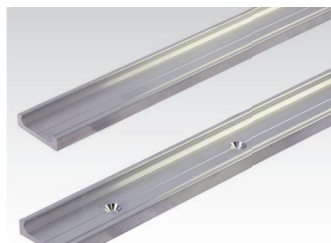
Product No.	Product	Load ratings in kg depending on mounting position and number of carriages						Weight g			
		vertically mounted			horizontally mounted, lying				horizontally mounted, hanging**		
		1 Carriage	2 Carri.	3 Carri.	1 Carriage	2 Carri.	3 Carri.	1 Carriage	2 Carri.	3 Carri.	
649 705 01	Carriage with stainless steel balls	50	90	130	30	54	70	30	54	70	120
649 705 02	Carriage with polymer balls	30	54	75	18	32	41	18	32	41	85
649 705 06	Track, length 600mm										320
649 705 06H	Track, length 600mm with holes										320
649 705 12	Track, length 1200mm										635
649 705 12H	Track, length 1200mm with holes										635
649 705 18	Track, length 1800mm										950
649 705 18H	Track, length 1800mm with holes										950
649 705 24	Track, length 2400mm										1270
649 705 24H	Track, length 2400mm with holes										1270
649 705 03*	End Stop (1 piece)*										15

\* Depending on the application, 2 pieces may be required. 2 screws included.

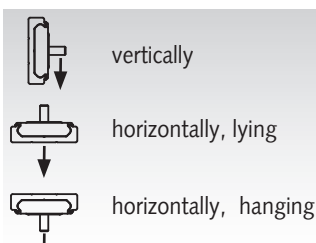
\*\* For rail lengths from 1200mm and carriage spacing min. 400mm.



Carriage (with mounting aid) and End Stops have to be ordered separately.



Tracks on choice without bores or with mounting holes.



The load ratings depend on the mounting position (see table).



Drilling jig: to drill pinholes for permanent pinned connection of tracks.

### Note

Not recommended for high torque applications.  
Fix track on a rigid and level surface. Fixing recommendation:  
M4 countersunk screw or 4mm countersunk wood screw.  
Drill countersunk holes in the middle of track, hole distance from 100mm up to 200mm, depending on mounting position and load.

Push the carriages with the mounting aid carefully onto the track.  
Distribute weight evenly across carriages. Infinite track lengths possible. Butt tracks end to end and align the centre lines.  
For permanent pinned connection, use drilling jig (on request) for 3mm pins. Reworking on request.