

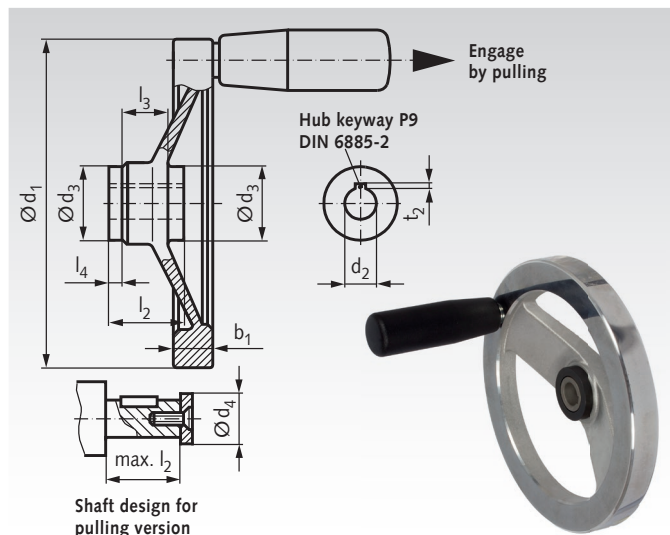
Safety Handwheels SHR

Material: Aluminium, polished. Coupling attachment assembled. Can only be supplied with revolving, cylindrical handle made from plastic with threaded steel bolt and with hub keyway.

According to safety regulations, handwheels must be mounted on the shaft in such a way that they do not rotate along with the machine drive. Safety handwheels comply with this regulation.

Procedure: Wheel disengaged if not used. By axial displacement of the wheel (pulling) the two serrated wheel rims are engaged. The wheel is now positively keyed to the shaft. When the wheel is released, it automatically disengages. The coupling elements are assembled together in an enclosed unit. Coupling attachment made from steel, nitrided, bearing surface ground and PTFE coated, for minimal friction between bearing surfaces and high wear resistance. An oil hole is provided, which serves to be connected to a pressure oiler in the wheel hub. Frequent lubrication is an important precondition in guaranteeing the correct functioning of the plain-bearing coupling attachment. The range of application of these handwheels is limited to low shaft speeds, or to higher speeds of only short duration (e.g. feed screws for milling machine table with rapid feed).

We assume no liability for any consequential damage.



The coupling attachments can also be supplied separately, to be mounted with existing handwheels. Prices on request.

Ordering Details: e.g.: Product No. 67061200, Safety Handwheel SHR, 125 mm

Product No.	d ₁ mm	d ₂ ^{H7} mm	d ₃ mm	d ₄ max. mm	b ₁ mm	l ₂ mm	l ₃ mm	l ₄ mm	t ₂ mm	Handle-Ø mm	Handlelength mm	Weight g
670 612 00	125	12	28	17	15	28,5	18	5	1,1	23	67,5	552
670 614 00	140	12	28	17	16,5	28,5	18	5	1,1	23	67,5	660
670 616 00	160	14	32	21	18	32,5	20	6	1,3	26	82,5	907
670 620 00	200	18	38	26	20,5	36,5	24	6	1,7	26	82,5	1324
670 625 00	250	22	45	30	23	47,5	28	12	1,7	28	92,5	2122

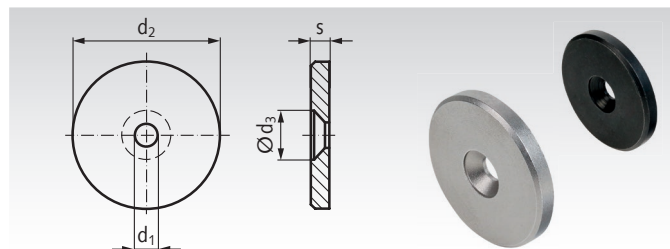
Countersunk Washers

Material: Steel, turned, black oxide finish.
Stainless steel 1.4305 (AISI 303),
turned, matte shot-blasted.



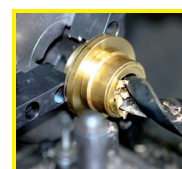
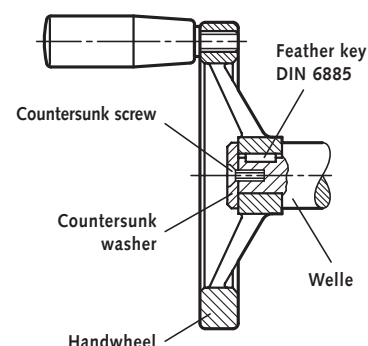
Standard countersunk washers for axial securing. They are fastened to the end faces of shaft ends using countersunk screws DIN EN ISO 2009 (ex DIN 7991) or DIN EN ISO 10642 (ex DIN 963).

Ordering Details: e.g.: Product No. 65310012, countersunk washer for M3, diameter 12mm, steel, turned, black oxide finish



Product No. Steel	Product No. Stainless Steel	for Screws Size	d ₁ mm	d ₂ mm	d ₃ mm	s mm	Weight g
653 100 12	653 100 12A2	M3	3,2	12	6,5	2,3	1,5
653 100 16	653 100 16A2	M4	4,3	16	8,5	3	3,4
653 100 20	653 100 20A2	M4	4,3	20	8,5	3	5,7
653 100 22	653 100 22A2	M5	5,3	22	10,3	3,5	7,8
653 100 25	653 100 25A2	M5	5,3	25	10,3	3,5	10,4
653 100 28	653 100 28A2	M5	5,3	28	10,3	3,5	13,3
653 100 32	653 100 32A2	M6	6,4	32	12,3	4	19,7
653 100 36	653 100 36A2	M6	6,4	36	12,3	4	25,4
653 100 40	653 100 40A2	M6	6,4	40	12,3	5	39,8
653 100 45	653 100 45A2	M6	6,4	45	12,3	6	61,2
653 100 52	653 100 52A2	M6	6,4	52	12,3	6	82,6

Example of use



**Reworking within
24h-service possible.
Custom made parts
on request.**