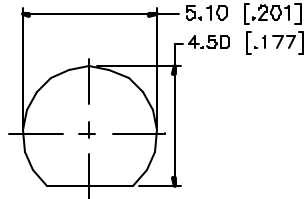
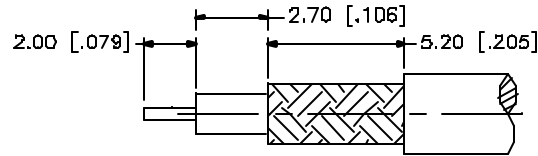


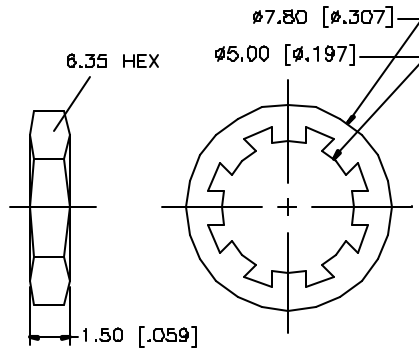
| REV. | DATE | DESCRIPTION |
|------|----------|-----------------------|
| A | 03/27/05 | UPDATE DRAWING FORMAT |



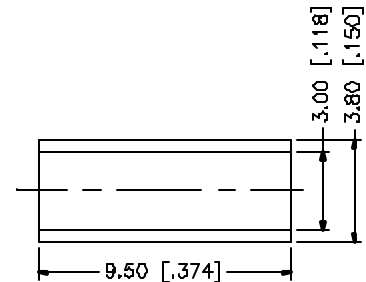
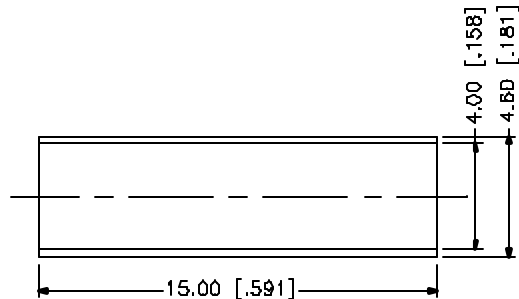
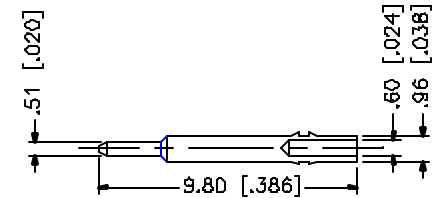
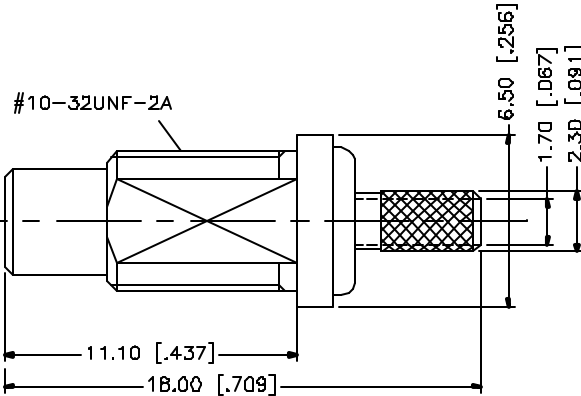
RECOMMENDED MOUNTING HOLE



RECOMMENDED CABLE STRIPPING DIMS.



1.50 [.059]



NOTES:

1. CRIMPED FERRULE
HEX CRIMP SIZE .128"
2. MAX. PANEL THICKNESS = 2.4mm

| QTY | DESCRIPTION | MATERIAL | FINISH | QTY | DO NOT SCALE DRAWING | APPROVALS | DATE | Amphenol Connex | | | |
|-----|------------------|----------|---------|-----|--|-------------------------------|--------|--|---------------------------|--------|----------|
| 8 | | | | | UNLESS OTHERWISE SPECIFIED DIMENSIONS ARE IN MILLIMETERS DIMENSIONS IN [] ARE IN INCHES AND FOR CUSTOMER REFERENCE ONLY. | | | PART DESCRIPTION SMC BULKHEAD CRIMP JACK (FOR RG-174/U, 188A/U, 316/U) | | | |
| 7 | HEAT SHRINK TUBE | | | 1 | UNLESS OTHERWISE SPECIFIED TOLERANCES FOR MILLIMETERS ARE: 0.5 - 8mm ± 0.20mm 8 - 30mm ± 0.40mm 30 - 120mm ± 0.60mm | DRAWN | G.R.S. | | | | 03/27/05 |
| 6 | HEX NUT | BRASS | GOLD | 1 | UNLESS OTHERWISE SPECIFIED TOLERANCES FOR INCHES ARE: .020 - .315 = ± 0.007" .315 - 1.180 = ± 0.015" 1.180 - 4.724 = ± 0.020" | CHECKED | | | PART NO. 152105 | | |
| 5 | LOCK WASHER | BRASS | GOLD | 1 | | ISSUED | | | DWG. NO. 152105.DWG | | |
| 4 | FERRULE | COPPER | GOLD | 1 | | SHEET | 1 OF 1 | | REV. A | SIZE A | SCALE NA |
| 3 | CONTACT PIN | BRASS | GOLD | 1 | | CAP FILE C:/152/152105.DWG | | | | | |
| 2 | INSULATOR | TEFLON | NATURAL | 1 | | | | | | | |
| 1 | BODY | BRASS | GOLD | 1 | | | | | | | |