

# CMM-SST | Hinges

Stainless steel

# CMM-BL | Hinges

Aluminium

- 1
- 2
- 3
- 4
- 5
- 6
- 7
- 8
- 9
- 10
- 11
- 12
- 13
- 14
- 15
- 16
- 17
- 18



**MATERIAL**  
AISI 316 stainless steel.

**COLOUR**  
Natural, electropolished finish.

**ROTATING PIN**  
AISI 316 stainless steel.

**STANDARD EXECUTION**  
Pass-through holes for countersunk head screws.

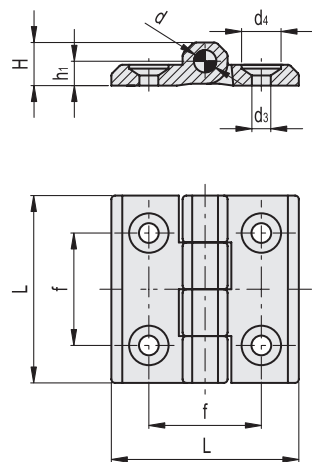
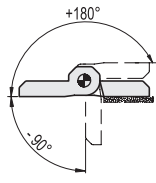
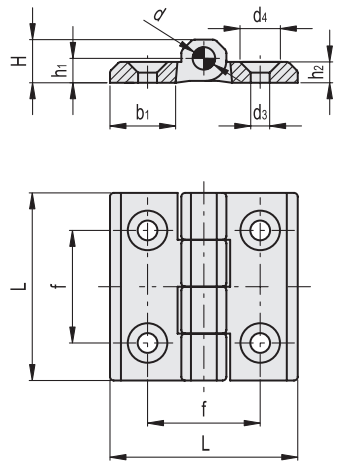
**ROTATION ANGLE (APPROXIMATE VALUE)**  
Max 270° (-90° and +180° being 0° the condition where the two interconnected surfaces are on the same plane).  
Do not exceed the rotation angle limit so as not to prejudice the hinge mechanical performance.

**MATERIAL**  
Aluminium, matte finish.

**ROTATING PIN**  
AISI 303 stainless steel.

**STANDARD EXECUTION**  
Pass-through holes for countersunk head screws.

**ROTATION ANGLE (APPROXIMATE VALUE)**  
Max 270° (-90° and +180° being 0° the condition where the two interconnected surfaces are on the same plane).  
Do not exceed the rotation angle limit so as not to prejudice the hinge mechanical performance.



| Code   | Description     | L  | d3  | d4   | f  | H    | h1  | h2 | b1   | d | △   |
|--------|-----------------|----|-----|------|----|------|-----|----|------|---|-----|
| 428412 | CMM-SST-30-SH-4 | 30 | 4.5 | 8.5  | 18 | 7.5  | 4.5 | 4  | 10.5 | 3 | 11  |
| 428501 | CMM-SST-40-SH-5 | 40 | 5.5 | 10.5 | 25 | 9    | 5.5 | 5  | 14   | 4 | 41  |
| 428601 | CMM-SST-50-SH-6 | 50 | 6.5 | 12.5 | 30 | 11.5 | 6.5 | 6  | 18   | 6 | 81  |
| 428701 | CMM-SST-60-SH-8 | 60 | 8.5 | 16.5 | 36 | 15   | 8.5 | 8  | 21.5 | 8 | 172 |

| Code   | Description    | L  | d3  | d4   | f  | H    | h1  | d | △  |
|--------|----------------|----|-----|------|----|------|-----|---|----|
| 428431 | CMM.30-BL-SH-4 | 30 | 4.6 | 9.5  | 18 | 7.5  | 4.5 | 3 | 12 |
| 428531 | CMM.40-BL-SH-5 | 40 | 5.3 | 10.2 | 25 | 9    | 5   | 4 | 24 |
| 428631 | CMM.50-BL-SH-6 | 50 | 6.4 | 12.5 | 30 | 11.5 | 6   | 6 | 43 |
| 428731 | CMM.60-BL-SH-8 | 60 | 8.3 | 16.2 | 36 | 15   | 8   | 8 | 85 |

Hinges and accessories