

# MICRO SWITCH

FREEPORT ILLINOIS, U.S.A  
A DIVISION OF HONEYWELL

FED. MFG. CODE 91929

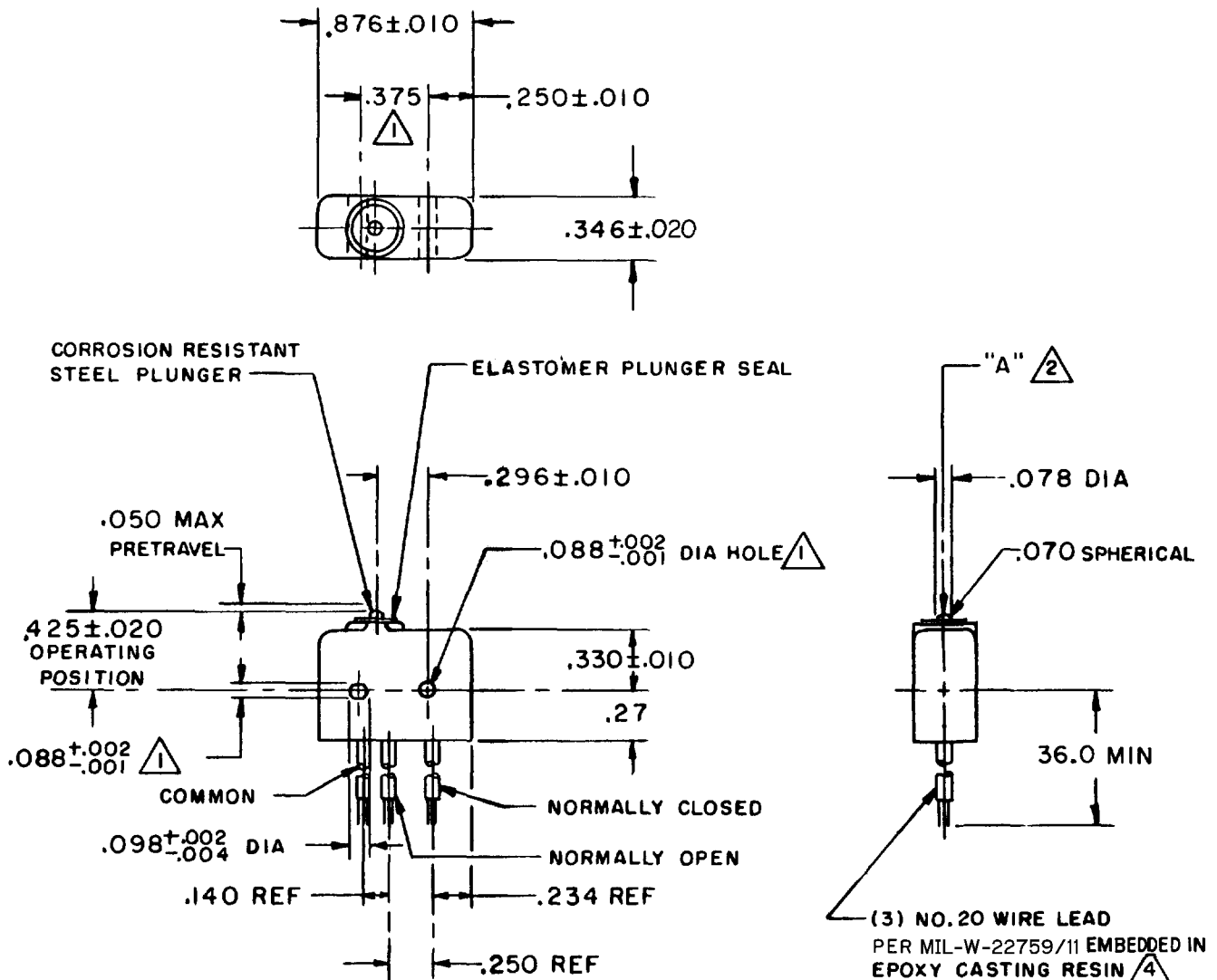
## SWITCH - BASIC

CATALOG LISTING

### 6SE175-3

6SE175-3  
 PAGE 1 OF 1  
 M  
 DRAWING NUMBER  
 X 7  
 X 5  
 ISSUE  
 X 8  
 REVISIONS  
 A CO-34213  
 J A L  
 26 SEPT 74  
 B CO-34757  
 J A L  
 20 JAN 75  
 C CO-56208  
 G J W  
 27 NOV 84  
 D CO57041A  
 CJH  
 21 MAR 85  
 E CO59012  
 J A P  
 27 MAR 86  
 F CO94274  
 DLM  
 MAR 99  
 FORMTEK  
 FO-52848  
 DRAWN  
 R E R 11 APR 74 CHECK LSP 13 APR 74 CHECK

RELEASE NO. PR-4068  
 REPLACES  
 CHECK  
 CHECK



- NOTE -**
- ① - MOUNTING HOLES WILL ACCEPT  $.087$  MAX DIA PINS OR SCREWS ON  $.375 \pm .002$  CENTERS
  - ② - ACTUATION IN LINE WITH ARROW "A" IS RECOMMENDED
  - ③ - WEIGHT OF SWITCH ONLY IS  $.26$  OZ MAX, WEIGHT OF SWITCH WITH WIRE LEADS IS  $.60$  OZ MAX
  - ④ - WIRE LEADS MARKED WITH CIRCUIT IDENTIFICATION AND WIRE GAGE (CLOSED-20, OPEN-20 AND COMMON-20) PER MIL-W-5088

THIS DRAWING COVERS A PROPRIETARY ITEM AND IS THE PROPERTY OF MICRO SWITCH, A DIVISION OF HONEYWELL. THIS DRAWING IS NOT TO BE COPIED OR USED WITHOUT THE APPROVAL OF MICRO SWITCH.

CHARACTERISTICS	ELECTRICAL DATA	SCALE FULL
OPERATING FORCE ----- 5-17 OZ	CONTACT ARRANGEMENT S P D T	DO NOT SCALE PRINT
RELEASE FORCE ----- 4 OZ MIN	250 VAC ----- 5 AMP	UNLESS OTHERWISE NOTED
RELEASE TRAVEL ----- .004 MIN	30 VOLTS DC RATING	DIMENSIONS ARE IN INCHES
DIFFERENTIAL TRAVEL ----- .004 MAX	INDUCTIVE ----- SEA LEVEL -- 3 AMP	<b>TOLERANCES ARE</b>
OVERTRAVEL ----- .003 MIN	RESISTIVE ----- SEA LEVEL -- 5 AMP	ONE PLACE (.0) $\pm .030$
	MAXIMUM INRUSH ----- 24 AMP	TWO PLACE (.00) $\pm .015$
		THREE PLACE (.000) $\pm .005$
		ANGLES $\pm$
		WEIGHT ③