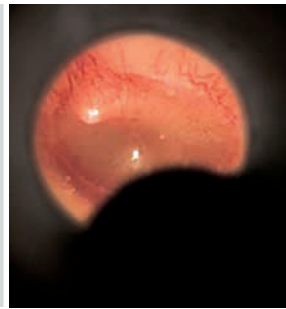
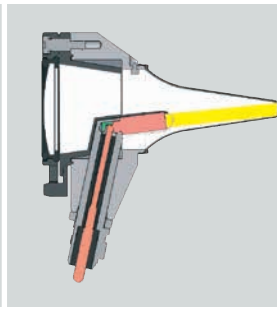


Bright XHL Xenon Halogen direct illumination.



HEINE BETA® 100 Diagnostic Otoscope

Diagnostic Otoscope with an all-metal housing



An otoscope with direct Xenon Halogen illumination in an elegant all-metal instrument head. Unusually-versatile in combination with nasal and spreadable specula for easy instrumentation.

For use with reusable specula or UniSpec disposable specula. With tip-adaptor (B-000.11.306) it is also possible to use AllSpec disposable tips.

- ∴ **All-metal housing.** Exceptionally tough and durable.
- ∴ **Instrument head matt-black inside.** Eliminates reflexes.
- ∴ **XHL Xenon Halogen Technology.** Extremely bright, white light.
- ∴ **Large, scratch-resistant glass viewing window with 3x magnification.** Unobstructed view, distortion-free image.
- ∴ **Swivelling viewing window built into instrument.** Useful for instrumentation, cannot be mislaid.
- ∴ **Insufflation port.** Reliable test of tympanic mobility.
- ∴ **Extensive choice of accessories.** Very versatile e.g. for nasal examination.

- ∴ All-metal housing
- ∴ Silica glass viewing window
- ∴ Easy instrumentation



[01]

BETA100 Diagnostic Otoscope	2.5V	3.5V
with 6 reusable specula, without handle	B-001.11.527	B-002.11.527
without specula, without handle	B-001.11.525	B-002.11.525

XHL Xenon Halogen spare bulb	X-001.88.037	X-002.88.049
------------------------------	---------------------	---------------------

Replacement sleeve for bulb. Reduces reflexes. [01]	B-000.11.212
---	---------------------