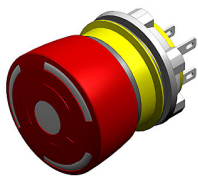


# EAO – Your Expert Partner for Human Machine Interfaces

## 84-5021.2B20 - Emergency-stop switch complete, foolproof EN IEC 60947-5-5

### 84-5021.2B20 - Emergency-stop switch complete, foolproof EN IEC 60947-5-5



Attention: The preview is based on a sample product. This can differ from your current configuration.

#### Mounting

Mounting cut-out	Ø 22,3 mm
Design	raised
Behind panel depth	18 mm

#### Front

Front dimension	Ø 32 mm
Front shape	round

#### Other Attributes

Weight	0,028 kg
Operating voltage	5 ... 30 V DC
Operation current	9.7 ... 12.4 mA
Material	Plastic

#### Operating-/Indication part

Lens material	Plastic
Lens colour	red
Lens profile	Mushroom
Lens optics	opaque
Lens illumination	illuminative
Lens	

#### IP-Rating

Front protection	IP65
------------------	------

#### Connection Method

Terminal	Plug 2.8 x 0.5 mm
----------	-------------------

#### Actuator

Switching action	Maintain
Housing colour	yellow
Housing material	Plastic

#### Switching element

Switching voltage	250 V AC/DC
Switching current	5 A
Switching system	Slow-make switching element
Contacts	1 NC
Contact material	gold-plated silver

#### Illumination


LED colour	red
------------	-----

#### Function

# EAO – Your Expert Partner for **Human Machine Interfaces**

84-5021.2B20 - Emergency-stop switch complete, foolproof EN IEC 60947-5-5

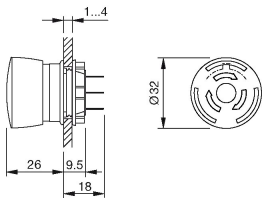
Emergency stop switch



# EAO – Your Expert Partner for Human Machine Interfaces

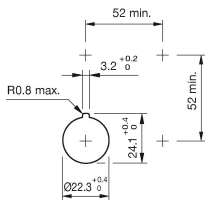
84-5021.2B20 - Emergency-stop switch complete, foolproof EN IEC 60947-5-5

## Dimensions

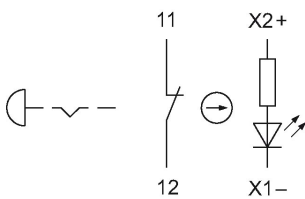


P = Plug-in terminal 2.8 x 0.5 mm

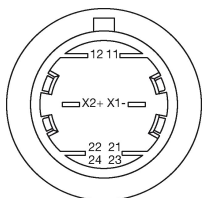
## Mounting cut-outs



## Wiring diagram



## Component layout



## Additional information

Twist to unlock clockwise

Position indication ring black

Application as per DIN EN ISO 13850 and EN 60204-1

Standard version: Flat ribbon-cable length 300 mm or plug-in terminal 2.8 x 0.5 mm

Other options on request: Customisation of flat ribbon-cable and connectors

Luminosity and wave length variations caused by LED

manufacturing processes may cause slight differences regarding the illumination

## Legend

Contacts: NC = Normally closed