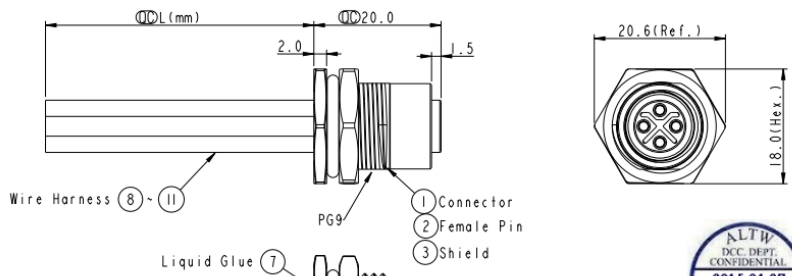
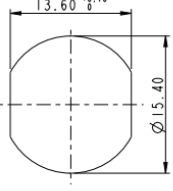
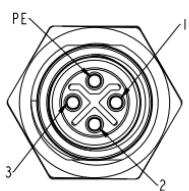


REV.	ECN NO.	DATE	SIGN	DESCRIPTION
A	Initial Release	2015/03/04	Cary	Change Rev. 01 to Rev. A

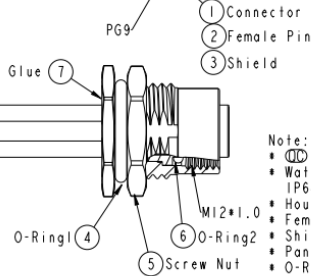
**ALTW**  
CONFIDENTIAL  
2015-03-04  
R&D DEPT.



MI2S-04PFFS-SF8BXX  
 XX: 150-1500mm  
 IS: 150mm  
 30: 300mm  
 50: 500mm  
 A0: 1000mm  
 A5: 1500mm  
 Wire Length(L): 150-1500mm



PE	Black	黑
3	Blue	藍
2	White	白
1	Brown	棕
Conn.	Wire Color	Pin Out



- Note:
- ∅ Important Dimension.
  - Waterproof Rate: IP68.
  - IP68: 1M Depth Of Water In 24hours.
  - Housing: PA66, UL94V-0, Black.
  - Female Pin: Copper Alloy, Gold Plated.
  - Shield: Zinc Alloy, Nickel Plated.
  - Panel Nut: Zinc Alloy, Nickel Plated.
  - O-Ring1: Viton, Black.
  - O-Ring2: Viton, Green.
  - Wire Harness: UL1015 16AWG(1.5mm<sup>2</sup>).
  - Rated Voltage: 630V AC.
  - Rated Current at 40°C: 12A.
  - Operation Temperature: -40~85t.
  - For Panel Thickness Max 4.5mm.
  - Nut Torque: 4-6 Kgf·cm (0.4-0.6N.m).
  - Wire harness Tolerance: 150-300 ±15mm  
301-1000 ±20mm  
Over1000 ±40mm

**ALTW**  
R&D DEPT.  
CONFIDENTIAL  
2015.04.27  
ISSUED

UNIT: mm	TITLE: MI2 S-Code 4Pin Female Type	Amphenol LTW	ITEM NO: M12S-04PFFS-SF8BXX	DRAWN BY: Cary	DATE: 2015-03-04
TOLERANCE -f ±0.25 -xx ±0.1 -xxx ±0.05 ANGLES ±1°	SCALE: 2:1 REV: A	SIZE: A4 SHEET: 1 of 1 W-REV: A.3 QC: Inspection item	CHECKED BY: Yu Long	DATE: 2015-03-04	APPROVED BY: Jerry
安費諾亮泰企業股份有限公司		CUSTOMER: ALTW	DATE: 2015-03-04		

THIS DOCUMENT IS SUBJECT TO CHANGE WITHOUT NOTICE. IT IS CONFIDENTIAL AND A PROPERTY OF AMPHENOL LTW. DISCLOSURE TO THIRD PARTY HAS TO BE AUTHORIZED BY AMPHENOL LTW.